

THE
PARROT

19  23



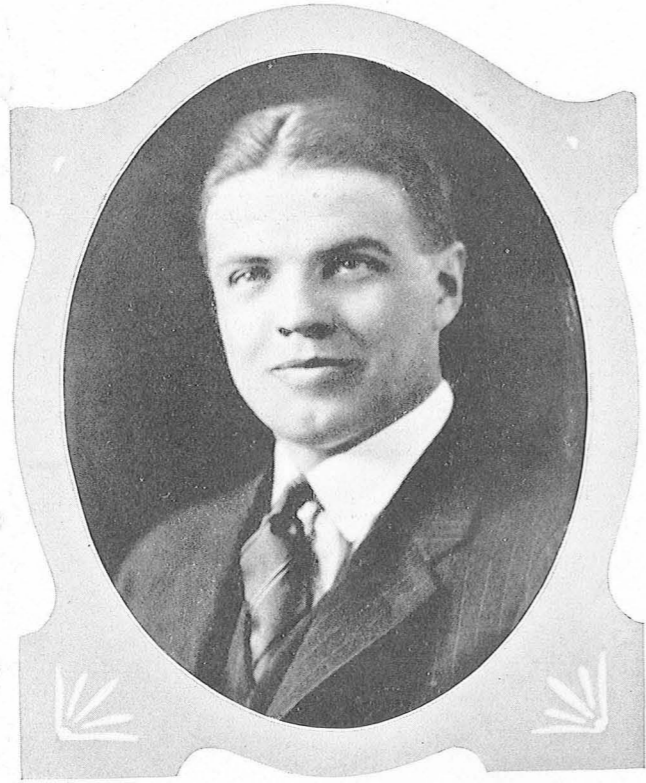
The
PARROT

1923

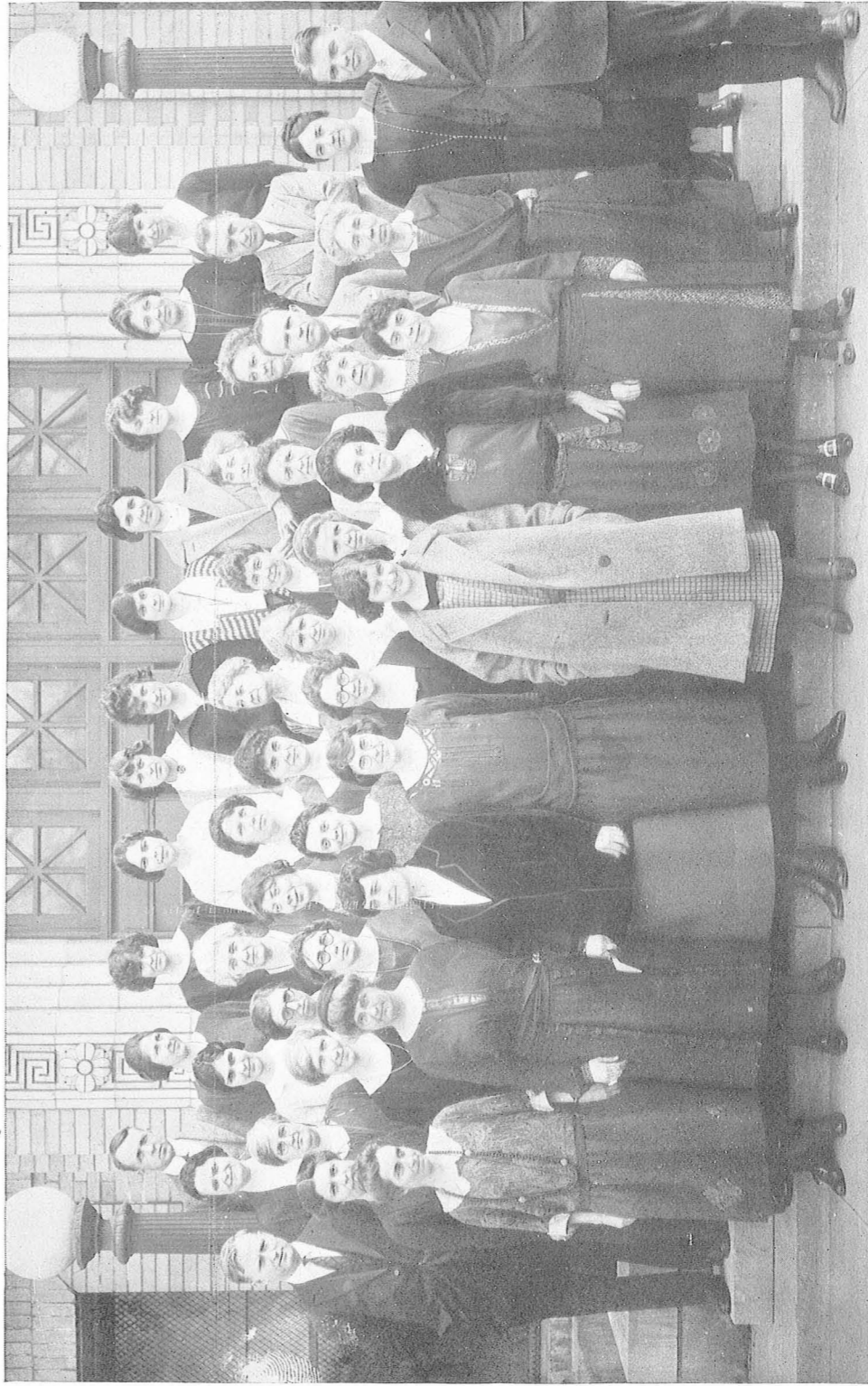


STUART A. COURTIS

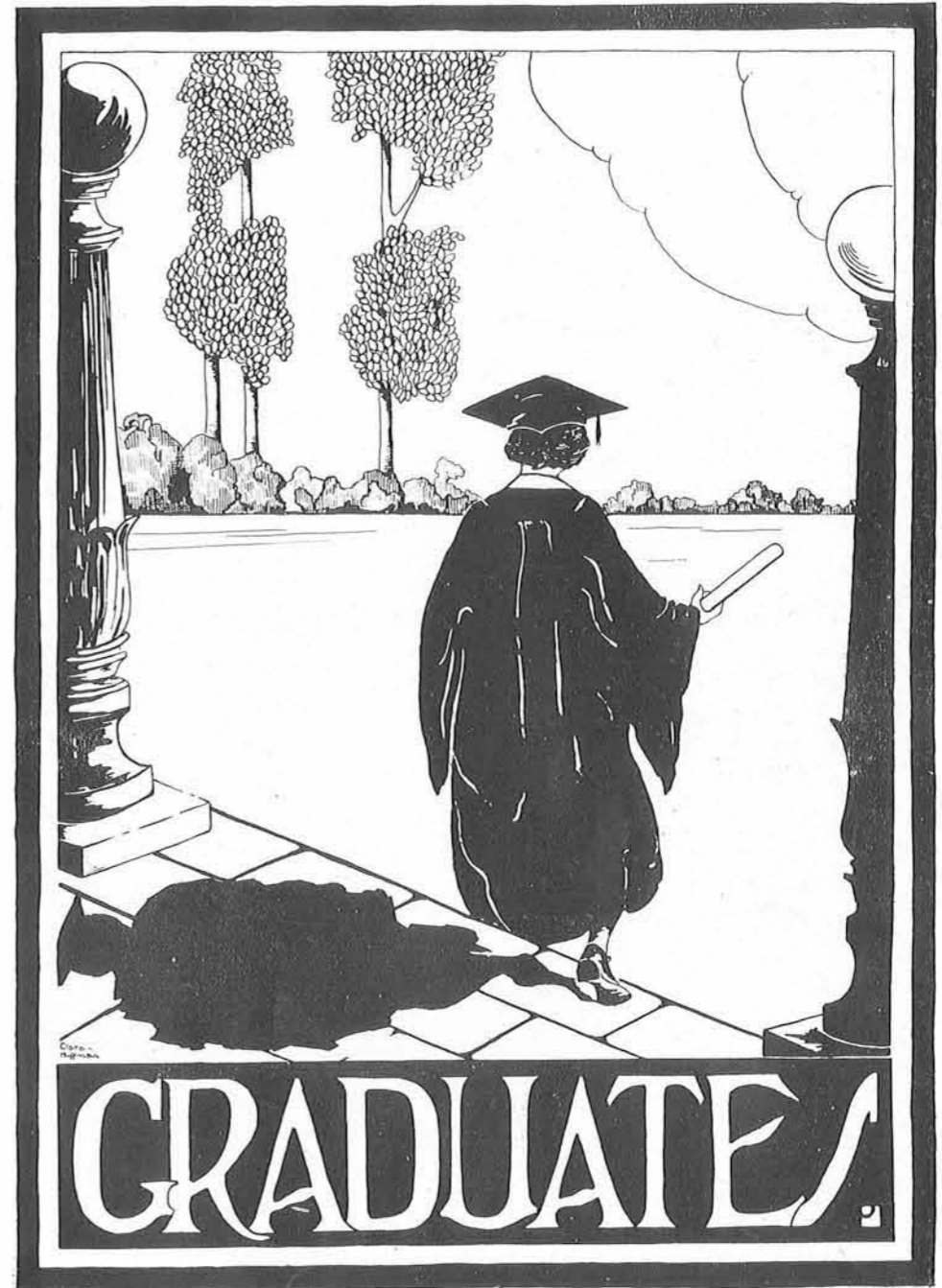
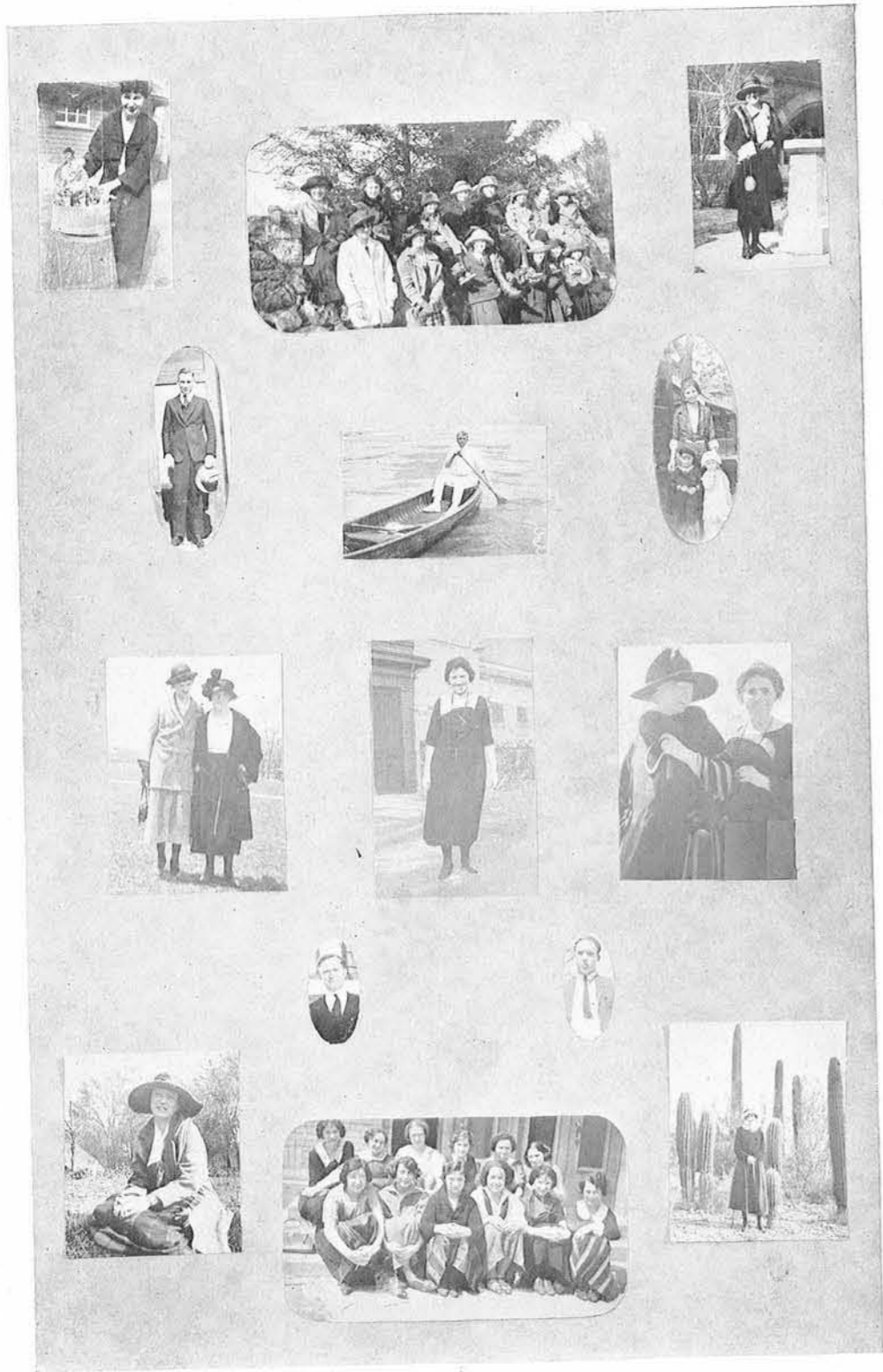
To
Stuart A. Curtis
Dean of Detroit Teachers College
In recognition of his signal accomplishments
In the cause of Education
The Class of
1923
Respectfully dedicates
The first issue of
The Parrot



WARREN E. BOW



Blackstone, Seaton, Smith, Lewis, Siglyn, Osborn, Pack, Hormung, Apel, Wedin, Connelly. 2nd—McFarland, Wright, Stough, Worden, Smith, Conover, Judge, Koller, Omans, Magee. 3rd—Pritchard, Williams, Ramsey, Hubbard, Rasey, Wucciock, Muffat, LeFurge. 4th—Bristol, Jackson, Leland, Newman, Gratton, Henze, Roller, Brown, Ass't Dean Bow. 5th—Dye, Camerer, Maley, Jacobs, Carmody, Hart, Boyer.





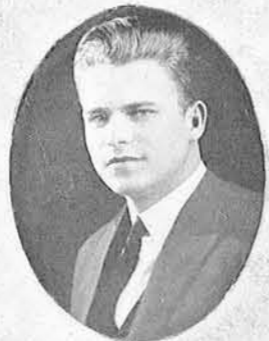
Dorothy Chalk
President



Ruth Garvelink
Secretary

GRADUATING
CLASS
OFFICERS

JANUARY
1923



Urban Hartung
Treasurer



Jean Seidel
Vice-Pres.

Helen Armstrong - - - -

Katherine Baker - - Eastern H. S.

Katherine Banning, Southeastern H. S.
Y. W. C. A.

Marjorie Barnes - Mt. Vernon H. S.
Junto Club, Group Leader.

Marie Beckman - - - -

Suzanna Brown - Northwestern H. S.

Dorothy Campbell - - - -

Dorothy Clark - - - - Eastern H. S.

Ruth Cohen - - - Central H. S.

Annabelle Cosgrove - - - -

Lenore Craig - - Northwestern H. S.





Irene Creegan - - - Western H. S.
Y. W. C. A.

Betty Crossett - - - Northern H. S.

Melva Dean - - - -Central H. S.

Viola Dei - - - - Western H. S.

Geneva Denio - Northwestern H. S.
Y. W. C. A., Dramatic Club.

Mathilda Eckert - - - - -

Mary English - - - - -

Alice Evans - - - - -

Frances Fischer - - - - -
W. A. A.

Corrine Flattery - - - Holy Redeemer

Anne Frumin - - - Central H. S.
Dramatic Club.

Sadyibeth Heath, University of Michigan
January Class History.

Alice Hollyer - - - Northwestern H. S.

Ruth Garvelink - Northeastern H. S.
Secretary Freshman Class, Poster Com-
mittee, Secretary January Class.

Nellie Holmes - Northwestern H. S.
Kinder Band.

Mary Bliss Hubbell - Univ. of Michigan

Margaret Humphrey - Northwestern H.S.
January Class Picture Com.

Elizabeth Hurley - Northwestern H. S.

Mable Johnson - - - - -
W. A. A.

Alice Kannenburg - Southeastern H. S.
Staff January Annual.

Irene Kemeny - - - Western High

Dorothy Kenney - - - - -
W. A. A.





Shirley King - - Northeastern H. S.
Vice-President Freshman Class, President
Sophomore Class, T. C. Times
Staff, President Y. W. C. A., President
T. C. Union.

Grace Kissane - - - Eastern H. S.
Junto Club, Class Song.

Marianne Knapp - - - -
W. A. A.

Angela MacHale - - - -
W. A. A.

Margaret McNamara - - - -
W. A. A.

Florence Maloney - Sacred Heart Acad.

Cyrena Mansfield - - Central H. S.
W. A. A.

Winifred Marsh - - Holy Redeemer
W. A. A.

Zelda Medvedov - - Central H. S.
Dramatic Club, Class Play Committee,
"Will-o-the-Wisp."

Edna Mortimer - - Holy Redeemer
W. A. A.

Mary Neitzel - - - Eastern H. S.
Vice-President Dramatic Club, Y. W.
C. A., Class Will.

Anne Nurko - - - Central H. S.
Dramatic Club Play Committee.

Frances O'Connor - - - -
W. A. A.

Vivian Pardo - - Holy Redeemer
W. A. A.

Ida Pecherer - - Northeastern H. S.
Class Prophecy, Dramatic Club.

Helen Petroskey - Holy Redeemer

Mrs. Blanche Phillips - - -
Officer of Junior Class, Junto Club.

Mildred Purdon - Northwestern H. S.
W. A. A., Y. W. C. A.

Julia Rivard - - - Eastern H. S.
Y. W. C. A.

Lena Rosen - - - Central H. S.

Bella Rosenberg - Northeastern H. S.
Union House Committee, Class Officer.

Mildred Rosenbloom - - Central H. S.
W. A. A.





Mildred Rossback - - - - Rosary

Alice Rothman - - Central H. S.
Program Committee.

Clara Rothstein - - - Central H. S.
W. A. A.

Elsa Shaffer - - - Central H. S.
Class Banquet Committee, Annual Ad-
vertising Committee.

Natalie Schulz - - - Northwestern H. S.
Orchestra, Y. W. C. A.

Viola Sibble - - - U. of Oklahoma
Secretary of Junior Class.

Jean Seidel - - - Eastern H. S.
Vice-President of Graduating Class, Dra-
matic Club, Y. W. C. A.

Esther Silk - - - Northern H. S.
Douglas Debating Society.

Margaret Silk - - Northwestern H. S.

Mary Smith - - - Eastern H. S.
Outdoor Club, Y. W. C. A., Class In-
vitation Committee, Union Member-
ship Committee.

Rosamond Smith - - Central H. S.
Y. W. C. A., Freshman Social Com-
mittee.

Mrs. Flossie Spencer - Camden H. S.
Vice-President of Junior Class.

Edith Stanfield - - - Eastern H. S.
Y. W. C. A.

Helen Steiner - - - Eastern H. S.
Dramatic Club.

Catherine Sullivan, Blessed Sacrament
W. A. A.

Sophie Tierney - - Central H. S.

Emma Thress - - - Northeastern H. S.
Y. W. C. A.

Olga Wellfonder - - - Northeastern H. S.
Y. W. C. A.

Meta Wieneke - - - Eastern H. S.
Choral Club, "John and Jane," Class
Song Committee.

Florence Wixson - - Southeastern H. S.
W. A. A., Y. W. C. A.

Clema Snively - - - Central H. S.
Member of House Committee, Y. W.
C. A.

Urban Hartung - - - -
Treasurer Freshman Class, Editor-in-
Chief T. C. Times, Secretary Union,
Editor January Class, Treasurer Class.





Eleanor Oil
President



Glendore Forshee
Secretary

GRADUATING
CLASS
OFFICERS

JUNE
1923



Olive Buchner
Treasurer



Mary Clancy
Vice-Pres.

Ferne Adair - - - Western H. S.
Sporting Club, Y. W. C. A., W. A. A.

Dorothy Allingham - Eastern H. S.
Soc. Com. Chairman, Junto Club.

Rose Apel - - Holy Redeemer H. S.
W. A. A.

Ruth Grace Archbold - Redford H. S.
Dramatic Club, Choral Club, Kinder
Band, Y. W. C. A., T. C. Times, Rural
Club, Annual Staff, "Columbine,"
"John and Jane," "To Spring."

Theodora Aronstam - Northern H. S.
Dramatic Club, Asst. Progr. Com., W.
A. A.

Blanche Baker - Northwestern H. S.
Graduation Com., W. A. A.

Louise Ball - - - - -

Bernice E. Baskin - - Saginaw H. S.
Wanderlust Club (Sec.), Y. W. C. A.,
W. A. A.

Helen L. Beattie - Northwestern H. S.
Wanderlust Club (Sec.), Y. W. C. A.,
W. A. A.

Elizabeth Bero - Southwestern H. S.
Choral Club-Treasurer, T. C. Times,
Asst. Treas. (Grad.), W. A. A., Fresh-
man Play.

Maude Bignell - - - Belding H. S.
Choral Club, Rural Club, W. A. A., Y.
W. C. A., Program Com. (Union),
Sec. Choral Club, Assembly Program
Com. (Grad.)





Alice Bodjack - - St. Boniface Acad.
W. A. A.

Lucy Margaret Boulton - - -

Emelia W. Brandau - - Eastern H. S.
Pres. Fresh. Class, Chairman Assembly
Com. (Union), Chairman Union
Point Sys. Com., Prophecy Com., W.
A. A.

Dorothy Braude - - Northern H. S.
House Com., Kinder Band, W. A. A.

Catherine Marie Bretz - - -

Wm. A. Brown - - Detroit J. College
Mngr. Basketball Team, Union Publ.
Com., Men's Club, M. A. A., Pres. Adv.
Class.

Elizabeth V. D. Brownson - - -
- Hempel Normal, Berlin, Germany
D. J. C., Program Com., Junto Club,
Reading Club, Annual Staff, Song Com.

Olive Buchner - Northwestern H. S.
Rural Club, Y. W. C. A., Chairman
Pub. Com., W. A. A., Treasurer Grad.
Class.

Alice Grace Burgan - - - -

Louise Berger - - - - -

Genevieve Burns - Holy Rosary H. S.
Sporting Club, Wanderlust Club, Chm.
Union Social Com., Class Cheer Leader,
Treasurer Sporting Club.

Nina Busha - - - St. Clair H. S.
Ways-Means. Com., Rural Club, Y.
W. C. A., W. A. A.

Helena E. Cassel - - Eastern H. S.
W. A. A., Y. W. C. A.

Vera Carr - - - Western H. S.
W. A. A., Y. W. C. A.

Mary Clancy - - Northwestern H. S.
Group Leader, Sec. Junto Club, Bulletin
Com., Soph. Soc. Com., Chr. Graduating
Class Social Com., Vice-Pres.
Grad. Class, W. A. A.

J. Wilbur Chapman - - - -
- - Northwestern University
Pres. Adv. Class, T. C. Times Staff,
Annual Staff, Basketball, M. A. A.,
Men's Club.

Katherine Cole - - Rosary H. S.
Choral Club, W. A. A.

Pollye Claypool - - - -
- - Western Kentucky State Normal
W. A. A., Junto Club, Union Member-
ship Com.

Dorothy M. Cook - - Essex H. S.
Rural Club, Y. W. C. A., W. A. A.

Katherine Connelly - St. Mary's H. S.
St. Mary's Coll., Monroe, Sporting
Club, W. A. A., Group Leader, Social
Com., W. A. A., (Soph. Prom. Com.)

Marian Cameron - - Calumet H. S.
Wanderlust, Y. W. C. A., W. A. A.

Margaret E. Davey - St. Margaret H. S.
Buffalo, N. Y.
Y. W. C. A., W. A. A., History Com.





Edith Davis - - - Det. Bus. Inst.
W. A. A.

Katherine Doemling - Eastern H. S.
Chevy Chase School, Washington, D. C.,
Outdoor Club, W. A. A. A., Asst. Chair-
man Prom., Banquet Com.

Maurice Dombey, - - - Detroit J. C.

Bertha G. Earnest - - -
- - - Hullsburg H. S., Hullsburg, Wis.
Ring & Pin Com., Choral Club.

Beatrice W. Elder - Central H. S.
House Com., W. A. A., Y. W. C. A.,
Choral Club, Reading Club.

Rose Elias - - - Trenton H. S.
Rural Club, W. A. A., Ring & Pin Com.

Helen Elliott - Highland Pk. H. S.
Sporting Club, Y. W. C. A., W. A. A.,
Chairman Soc. Serv. Com., Rural Club,
Soph. Class Treasurer, Chairman Soph.
Hist. Com.

Celia Ermin - - - - -

Esther Eskovitz - - - Butler H. S.
W. A. A.

Fay Eskovitz - - - - Butler H. S.
W. A. A.

Lillian L. Farbman - Central H. S.
Choral Club, Publ. Com., Wanderlust
Club, W. A. A., T. C. Times Staff.

Ruby B. Fay - - - - -

Grace Fehr - - - Flushing H. S.
Social Com. Rural Club, Y. W. C. A.,
Pres. Wanderlust Club.

Pearl Feinstein - Erasmus Hall H. S.
Brooklyn, N. Y.
Publ. Com., Treasurer Adv. Club.

Tillie Fidler - - - - -Detroit J. C.
Univ. Akron, O., Union Social Com.

Marcella Fitzgerald - St. Leo H. S.
Wanderlust Club Publ. Com., Kinder
Band, Sporting Club, W. A. A.

Marguerite Mae Flesher, Central H. S.
Y. W. C. A., W. A. A.

Elizabeth Fraser - Southeastern H. S.
Sporting, Y. W. C. A., W. A. A., Soph.
Prom Com.

Grace Fraser - - - - Eastern H. S.
W. A. A., Y. W. C. A.

Dorothy Freitag - - - Western H. S.
Sporting Club, Y. W. C. A., Dramatic
Club, W. A. A.

Bessie Freitas - - - - -

Miriam Gabriel - - - Detroit J. C.
Dramatic Club, Lit. Ed. T. C.
Times, Annual Staff.





Clara Marie Gehringer - - -
St. Boniface Academy
W. A. A.

Gertrude Gerrard - Northwestern H. S.
Sporting Club, Group Sec.
W. A. A.

Hazel Gerrow - Ypsilanti Normal
W. A. A., Junto Club, Rural Club.

Pauline Gillett - Southeastern H. S.
Choral Club, Y. W. C. A., Chairman
Membership Com., Group Leader, Song
Com.

Louise C. Giese, Mrs. West. State Normal
Y. W. C. A., M. A. A.

Claude L. Going - Western State Normal
M. A. A.

Bernadette Grant - St. Mary's Academy
Chairman Wanderlust Club, Social
Com., Chairman Rural Dec. Com.,
Sporting Club, Orchestra, W. A. A.

Marcella Grant - - St. Mary's Academy
Wanderlust Club, Sporting Club, Chair-
man House Com.

Helen Gregory - - Eastern H. S.
Poster Com., W. A. A.

Helen M. Guck - Lake Linden H. S.
Rural Club, W. A. A.

Ruth C. Guenther - Southwestern H. S.
Wanderlust Dec. Com., Y. W. C. A.,
Rural Club, Choral Club, W. A. A.

Marion Esther Hackett - - -
Highland Park H. S.
Rural Club, Y. M. C. A., Annual Staff,
W. A. A.

Helen H. Harrison - Western H. S.
W. A. A., Y. W. C. A.

Betty R. Hascall - Northern H. S.
Outdoor Club, Wanderlust Club, W. A.
A., Y. W. C. A., Social Com., Publicity
Com., Grad. Com.

C. Melite Guichard - Alma College
Rural Club Publ. Com., Picture Com.,
Choral Club.

Helen W. Hayes - - Hart H. S.
Ocean City Normal
Business Night H. S., Washington, D.
C., U. of D., Chairman Soc. Com. Junto
Club.

Claudis Hensley - - Central H. S.
Sporting Club, W. A. A., Annual Staff,
Group Leader.

Eileen Herley - - Cathedral H. S.
Assembly Com., Poster Com., Group
Leader, W. A. A.

Eugenia Hewett - - St. Mary's Acad.
Monroe.
Y. W. C. A., Sporting Club, Rural Club,
W. A. A.

Isabelle M. Hill - Sault Ste. Marie H. S.
Group Leader, Grad. Com., W. A. A.

Evelyn Houle - Annunciation H. S.
Vice-Pres. Wanderlust Club, Poster
Com., Annual Com., W. A. A.

Suzanne C. Houston - Central H. S.
D. J. C., W. A. A.





Ellen Anne Hawoon - Western H. S.
W. A. A., Y. W. C. A., House Com.,
Sec'y Group.

Glendora H. Forshee - Detroit J. C.
Sporting Club, Song Leader, Y. W. C. A.,
W. A. A.

Clara Marguerite Huffman-Western H.S.
Chairman Publ. Com., Point Syst.
Com., Annual Staff.

Ruth Alice Hurd - Highland Pk. H. S.
H. P. J. C., Group Leader, Outdoor
Club, Reading Club, Y. W. C. A.

Margaret Hull - - - Oscoda H. S.
Membership Com. (Union), W. A. A.,
Sporting Club, Rural Club.

May Jackson - - River Rouge H. S.
Rural Club, Social Com., Y. W. C. A.,
W. A. A.

Elizabeth R. Jones - Royal Oak H. S.
W. A. A.

Madeline J. Jones - Western H. S.
Y. W. C. A., Assembly Prog. Com., W.
A. A.

Helen Kay - Blessed Sacrament Acad.
St. Mary's College, Monroe, W. A. A.

M. Ellen Kelley - - Hastings H. S.
W. A. A.

Georgina Kemeny - Western H. S.
W. A. A., Y. W. C. A.

Rose Keleher - - - St. Vincent Acad.
Sporting Club, W. A. A., Y. W. C. A.,
Group Sec'y.

Helen Kirby - - St. Vincent Academy
W. A. A., Y. W. C. A., Union Com.

Mabel Klees, Mrs. - Keystone State
Normal School, Y. W. C. A., W. A.
A., Rural Club.

Bessie Knoppow - - - -
Prom. Com. (Grad.), Social Com.,
Group Leader, Y. W. C. A., W. A. A.

Anne Koppman - - - Detroit J. C.
Junto Club, T. C. Times Staff, Wan-
derlust Club, House Com., Annual Staff.

Bernice D. Krieg - - Eastern H. S.
Rural Club, Wanderlust Club, Y. W.
C. A., House Com., Chairman Publ.
Com., W. A. A.

Caroline E. Lamport - Northern H. S.
Sporting Club, Rural Club, Y. W. C. A.,
W. A. A., Wanderlust Club, Pres.
Soph. Class, Vice-Pres. Assembly Prog.
Com.

Nell Lawrence - - - Almont H. S.
Wanderlust Club Treas., Rural Club
Soc. Com., W. A. A. Sec'y., Y. W. C.
A. Serv. Com., Chairman Publ. Com.,
W. A. A.

Antoinette LeFevre - - - -

Esther Liefeld - - - Eastern H. S.
Social Chairman, W. A. A., Chairman
Prog. Com.

Mildred Lemke - - Eastern H. S.
Rural Club, Wanderlust Club, Y. W. C.
A., W. A. A.





Grace Barbara Lindeman, Eastern H. S.
Wanderlust Club, W. A. A., Group
Leader, Pict. Com., Annual Staff.

Pauline E. Lord, Carnegie Inst. Tech.
Y. W. C. A., Kinder Band, Nom. Com.,
Group Leader, Assembly Prog. Com.

Mary McElroy - Holy Rosary H. S.
Sporting Club, Wanderlust, Rural Club,
Basketball, Hockey, Vice-pres. W. A.
A., Prom. Com., "Y" Vodvil, Class
Hockey, Volley B. B.

Katherine E. McLogan - Rosary H. S.
Pres. Sporting Club, Dramatic Club,
Chairman Membership Com., Wander-
lust Club, Y. W. C. A., Soph. Class
Pres., Pict. Com., W. A. A.

Mildred C. McMillan - Northern H. S.
Y. W. C. A., W. A. A., Point Sys.
Com., Publ. Com.

Marion McQueen - Northwestern H. S.
Y. W. C. A., W. A. A., Wanderlust
Club, Choral Club.

Marion McSorley - Annunciation H. S.
Mt. St. Joseph-on-Ohio.
Rural Club, W. A. A., Group Sec'y.

Elsie F. Mack - Northwestern H. S.
Y. W. C. A., W. A. A., Publ. Com.

Eleanor Malow - - Eastern H. S.

Winifred Anne Marr - St. Patrick H. S.
Wyandotte.
Group Leader, House Com., Rural Club
Com., W. A. A.

Fayette Martens - - Eastern H. S.

Rosemary Matgen - St. Vincent Acad.
Orchestra, Wanderlust Club, Group
Sec'y., W. A. A., Social Com.

Veronica R. Meyer, Northeastern H. S.
Wanderlust, Choral Club, Y. W. C. A.,
House Com.

Helen Morovitz - Northeastern H. S.
Wanderlust Club, W. A. A.

Helen Morse - - - Carnegie Inst.
Sporting Club, W. A. A., Social Com.

Bessie C. Munk - - Waldron H. S.
Rural Club Treas., Rural Club Pres.,
Picture Com., W. A. A.

Eva Munson - - River Rouge H. S.
Sporting Club, Rural Club, Y. W. C.
A., W. A. A., Chairman Banquet Com.

Eva Mutton - - - Eastern H. S.
Rural Club, Wanderlust Club, Y. W.
C. A., W. A. A.

Barbara Nale - - Eastern H. S.
Fresh. Play, Stage and Property Mgr.,
Treasurer of Union, Budget Com.,
Commencement Com. Ch.

Frances Newman - - Central H. S.
D. J. C., Wanderlust Sales Com., Prog.
Com., Poster Com., Junto Club, T. C.
Times, Poster Com., W. A. A.

Gertrude Newman - Arenac City Normal
Y. W. C. A., W. A. A., Soc. Com.

Eleanor Oil - - Northwestern H. S.
Fresh. Cl. Sec'y., Sec'y. W. A. A., So-
cial Com., Sec'y. Outdoor Club, Soc.
Com., Dramatic Club Vice-Pres., Group
Leader, Class President.





Bonnie Lynn Osborne - Cass Tech. H. S.
Choral Club, W. A. A.

Ella Ott - - - St. Francis H. S.
Traverse City.
Sporting Club, Wanderlust Club, W.
A. A., Picture Com.

Joyce Mildred Paull - Northwestern H. S.
Sec'y. Sporting Club, Vice-Pres., Group
Leader, Ring and Pin Com., Social Com.,
Dec. Com., Choral Club, Dramatic Club.

Helen Paddock - St. Boniface Academy
Sporting Club Sec'y., Group Leader,
W. A. A., Y. W. C. A.

Jane Palmer - - - Royal Oak H. S.
Rural Club, Sporting Club, Y. W. C. A.

Mella Parreth - Ohio Northern University
Choral Club, Junto, W. A. A.

Jack Pearlman - University of Michigan
Sec'y M. A. A.

Ethel Mae Phillips - Highland Pk. H. S.
Sporting Club, Y. W. C. A., Social &
Decoration Com., W. A. A.

Alice Phillips - Highland Pk. H. S.
H. P. J. C., Outdoor Club, Junto Club,
Y. W. C. A., Assembly Progr. Com.,
Union Com., W. A. A.

Jean Ramsay - - - Northern H. S.
Wanderlust Club, W. A. A.

Emily Ray - - - Cathedral H. S.
Wanderlust Club, W. A. A.

Esther Reiss - St. Vincent Academy
Dramatic Club, Sporting Club, Group
Leader, Publ. Com., Poster Com., W.
A. A.

Florence Reno - St. Frederick H. S.
Pontiac, Mich.
Rural Club, W. A. A., Publ. Com.

Agnes Renton - - - Northern H. S.
Y. W. C. A., W. A. A.

Helen Rentz - - - Northwestern H. S.
Banquet Com., W. A. A.

Nettie Rhodes - - - Northern H. S.
Rural Club Soc. Com., Sporting Club
Soc. Com., Picture Com., Chairman
Point Syst. (Union), W. A. A.

Clara A. Richard - Northwestern H. S.
Y. W. C. A., W. A. A.

Marguerita Fox Riley - - -
St. Vincent Academy
Choral Club, W. A. A., Group Leader,
House Com.

Lyle Ritchie - - - - -

Dorothy Robbins - Highland Park J. C.
W. A. A., Chairman Junto Soc. Com.,
Rural Club, W. A. A., T. C. Times,
Annual Staff.

Pauline C. Rohrer - - - - -
Michigan State Normal College
Junto Club, Budget Com., Poster Com.,
Song Com., W. A. A., Reader's Club,
Choral Club.

Mimi Romm - - - - -





Anne Rosengart - - - Central H. S.
Dramatic Club, W. A. A.

Hazel Roulo - - - Western H. S.
W. A. A., Y. W. C. A.

Elsie Geneva Ryan - - - Detroit J. C.
W. A. A.

Florence Schaufele - Chelsea H. S.
W. A. A., Dramatic Club.

Theresa M. Schmittiel - - -
- - - St. Boniface Academy
Sporting Club, W. A. A., Group Leader,
Chairman Invit. Com.

Marion Beth Schulte - Northern H. S.
Dramatic Club Pres., Sporting Club,
Wanderlust Club, Soc. Com., Chairman
Soc. Com., W. A. A., Annual Staff.

Ethel Schroeder - Macomb Co. Normal
Junto Club Soc. Com., W. A. A.

Margaret Scovia - Marquette St. Normal
Choral Club, Y. W. C. A., W. A. A.

Jennie L. Seeman - - - Central H. S.
Choral Club, Wanderlust Club, W. A.
A., Adv. Com. Annual (Grad.)

Margaret C. Seydel - Holy Redeemer H.S.
Ring & Pin Com., W. A. A.

Bertha Shaw - - - Northern H. S.
Rural Club, Wanderlust Club, W. A.
A., Y. W. C. A.

Leonella Shea - - - Central H. S.
Sporting Club Soc. Com., W. A. A.

Gladys Marguerite Shedd - - -

Victoria Sheifman - Central H. S.
Douglas Debat. Soc. Pres., W. A. A.,
Chairman Publ. & Hon. Membership
Com., Sporting Club, Progr. Com.,
Junto Club, Chairman Song Com.

Jerolean Shelby - - - Central H. S.
W. A. A.

Olive Shoecraft - Highland Pk. H. S.
Soc. Serv. Com., Rural Club, Y. W. C.
A., Vice-Pres. Sporting Club, Banq.
Com.

Esther Skinner - Southwestern H. S.
W. A. A.

Bessie Solomon - Northwestern H. S.
W. A. A., Y. W. C. A.

Celia Solovich - - - Central H. S.
W. A. A., Mus. Com.

Muryel Spedding - - - Trenton H. S.
Rural Club, Wanderlust Club, W. A. A., Y.
W. C. A.

Josephine Stauffer, Northwestern H. S.
Dramatic Club, Outdoor Club Treas.,
Vice-Pres. Y. W. C. A., Pres. Union,
Point Syst. Com., Assembly Prog.
Com., W. A. A.

Ruth Elizabeth Stein - Northern H. S.
Rural Club, Y. W. C. A., Wanderlust
Club, Ring & Pin Com., W. A. A.





Florence Stevens - Holy Redeemer H. S.
Soc. Com. Sporting Club, Orchestra,
Chairman Check. Com., W. A. A.

Cecelia Sullivan - - St. Leo H. S.
Rural Club, Pin & Ring Com., W. A. A.

Ruth Sullivan - - St. Patrick H. S.
Rural Club Mus. Com., Group Leader,
W. A. A.

Blanche Sweitzer - Northwestern H. S.
Pres. Wanderlust Club, Y. W. C. A.,
Assembly Com., W. A. A.

Ruth O. Taylor - Northwestern H. S.
Y. W. C. A., W. A. A.

Tessa B. Taylor - Northwestern H. S.
W. A. A., Y. M. C. A., Mem. Com.

Edna Tenkonohy - Northwestern H. S.
Pres. Wanderlust Club, Ring & Pin
Com., W. A. A.

Ethel Theisen - - St. Boniface Acad.
Sporting Club, Invit. Com., House Com.,
W. A. A., Y. W. C. A.

Dorothy Tomkins, - McGill University
Post Grad. Northern H. S., Wander-
lust Club, Group Leader, Pin & Ring
Com., W. A. A.

Viola Pearl Tressider - - - - -

Helen Vairo - Marquette State Normal
Poster Com. Rural Club, Group Lead-
er, Progr. Com., W. A. A.

Viola Venderbush - - Eastern H. S.
W. A. A.

Lyle Van Deventer - - Detroit J. C.
Men's Club, M. A. A., T. C. Times
Staff, Annual Staff Grad.

Margaret VanNorman - Northern H. S.
Dramatic Club, Publ. & Membership
Com., Y. W. C. A., House Com., Hand-
book Com., Cap & Gown Com., Class
Hist. (Grad.)

Elizabeth Walter - - - Detroit J. C.
Y. W. C. A., W. A. A., Progr. Com., So-
cial Com., Sec. Adv. Cl., Memor. Com.
(Grad.)

Jessie Wainwright - Western H. S.
W. A. A., Y. W. C. A.

C. Mildred Williams - Western H. S.

Georgia H. Werts - - Central H. S.
Sporting Club, Wanderlust Club, W.
A. A. Treas., Choral Club, Y. W. C. A.,
Soc. Com., Decor. Com.

Agnes Wolfort - - Eastern H. S.
Choral Club Pres., Group Leader, Chair-
man Song Com., W. A. A.

Dorothy Workman - - - - -

Ruth Zink - - - Western H. S.
Sporting Club, Y. W. C. A., Member-
ship Com., Group Leader, Assembly
Progr. Com., Banquet Com., Memorial
Com.



Lillian Agopian - - Central H. S.
 Clara May Bowlby - - - -
 Mary Isabell Brady - St. Vincent H. S.
 Terese Marie Breen - Rosary H. S.
 Arleta A. Burch - Northwestern H. S.
 Marion K. Cameron - Calumet H. S.
 M. Lucille Carter - - Brighton H. S.
 Helena E. Cassel - - Eastern H. S.
 Florence I. Chaffee - Southeastern H. S.
 Pollye Claypool, West. Ky. State Normal
 June Gage - Saginaw Eastern H. S.
 Gertrude Gleason - - - -
 Dorothy Alice Green, Northwestern H. S.
 C. Melite Guichard - Trenton H. S.
 Arthur S. Hill - - - -
 Esther C. Huckle, Cent. Mich. Nor. Sch.
 Josephine M. Kruscewska, H. Red'r H. S.
 Antoinette Le Fevre - St. Mary's H. S.
 Elizabeth Smith Long - - -
 Ann Rosamond McLaughlin - -
 - - - - Mt. St. Mary's H. S.
 Winifred Ann Marr - St. Patrick H. S.
 Mildred Matthews - St. Vincent's H. S.
 Helen Doyle O'Donnell, Bl. Sacra't H. S.
 Jessie Paull - - - -
 Christina E. Ratz - Cass City H. S.
 Estelle Roy - - St. Vincent's H. S.
 Margaret C. Seydel - Holy Red'r H. S.
 Maude Elizabeth Sheets - Eastern H. S.
 E. Marjorie Van Horne - - -
 Elizabeth U. Vinegar, Columbus, O., H.S.
 Ardis Wisner - - - Central H. S.
 Florence E. Worden Northwestern H. S.





Brown, Feinstein, Walter

Advanced Class

First Semester	OFFICERS	Second Semester
J. Wilbur Chapman.....	President.....	William Brown
Flossie Spencer.....	Vice-President.....	Orrin Hill
Viola Sibble.....	Secretary.....	Elizabeth Walter
Lloyd Doughty.....	Treasurer.....	Pearl Feinstein
Faculty Adviser		Robert Magee



McLogan, Elliot, Stevens, Sawyer

Sophomore Class

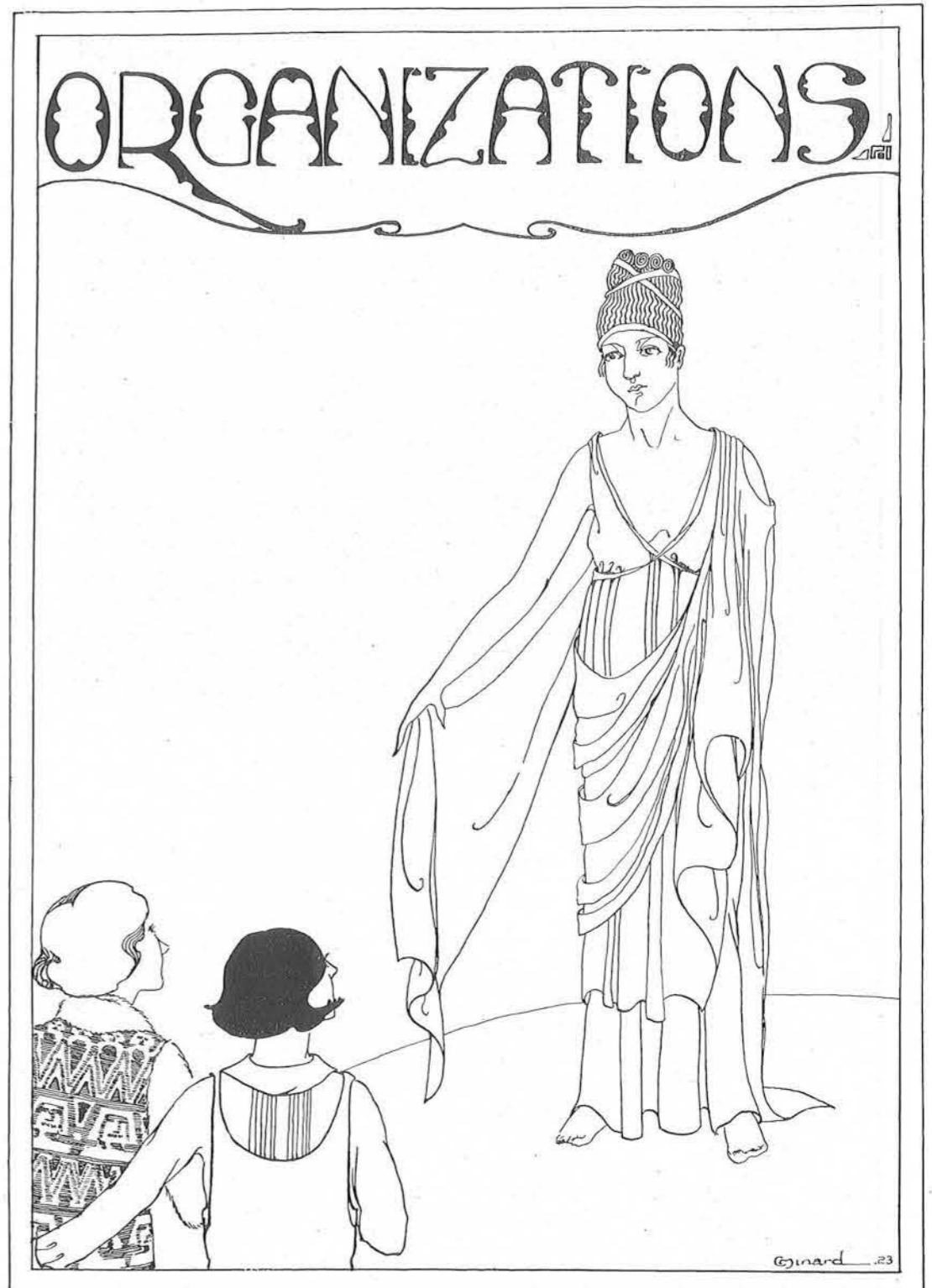
First Semester	OFFICERS	Second Semester
Josephine Stauffer.....	President.....	Katherine McLogan
Caroline Lamport.....	Vice-President.....	Betty Sawyer
Betty Crossett.....	Secretary.....	Helen Stevens
Dorothy Chalk.....	Treasurer.....	Helen Elliott



Garret, Gunnison, Beier, Schwartz

The Freshman Class

First Semester	OFFICERS	Second Semester
Elizabeth Sawyer.....	President.....	Mildred Beier
Georgia Kerr.....	Vice-president.....	Dorothy Gunnison
Margaret Anderson.....	Secretary.....	Margaret Garrett
Mary Wright.....	Treasurer.....	Sylvia Schwartz





Stauffer.

Lawrence

Lampport

Breen

Detroit Teachers College Union

First Semester

OFFICERS

Shirley KingPresident
 Eleanor OilVice-President
 Urban HartungSecretary
 Barbara NaleTreasurer

Permanent Union Committees

Budget Barbara Nale, Chm. Emelia Brandau Joseph Simone Robert Magee, Adviser	House Jean Seidel, Chm. Arthur Hill Mary Wright Mollie Zebrak	Membership Teresa Breen, Chm. Pollye Claypool Marjorie Kerr Mary Smith
Point Nettie Rhodes, Chm. J. C. Cox Mildred McMillan Hazel Rowe	Poster Ruth Garvelink, Chm. Bella Rosenberg	Program Emelia Brandau, Chm. Vera Lord Elizabeth Walter Ruth Zink
Publicity Clara Huffman, Chm. Ruth Armstrong Esther McClenahan Wm. Brown		Social Esther Liefeld, Chm. Mildred Beier Tillie Fidler Marion Schulte

Detroit Teachers College Union

Second Semester

OFFICERS

Josephine StaufferPresident
 Nell LawrenceVice-President
 Teresa BreenSecretary
 Caroline LampportTreasurer

COMMITTEES

Budget Caroline Lampport, Chm. Barbara Nale Pauline Rohrer	House Margaret Anderson, Chm. Anne Kopman Beatrice Elder Helen Tonkin	Membership Margaret Hull, Chm. Lulu Adams Vera Lord Violet Garrison
Point Emelia Brandon, Chm. Josephine Kruszewski Marie Wiedmaier Clara Huffman	Poster Ruth Fink, Chm. Pauline Rohrer Dorothy Robbins Frances Newman Celestine Minard	Program Esther Liefeld, Chm. Pauline Lord Betty Webber Margaret McAllister
Publicity Harold Simms, Chm. Miriam Gabriel Olive Buckner Helen Davidson	Social Celia Ermine Bessie Freitas	Social Genevieve Burns, Chm. Betty Walters Joyce Paull Laura Troester



Anderson, Crudden, Sawyer, Cary,
McColl, Fiero, Whittaker.

Y. W. C. A.

First Semester	OFFICERS	Second Semester
Helen Wise.....	President.....	Rena McColl
Josephine Stauffer.....	Vice-President.....	Margaret De Graw
Helen Wollenzine.....	Secretary.....	Helen Whittaker
Helen Vital.....	Treasurer.....	Margaret Anderson
Hilda Daske.....	Under Graduate Representative.....	Elizabeth Farland

CABINET

Rena McCall.....	Social Chairman.....	Harriet Crudden
Mary Wright.....	Service Chairman.....	Adele Grazier
Helen Whittaker.....	Publicity Chairman.....	Betty Sawyer
Shirley King.....	Religious Education Chairman.....	Iris Ladd



Ronn, Spedding, Beattie, Ball, Lampont, Stauffer,
Lemke, Grant, Mutton, Seemon, Wagner, Oll,
McQueen, Werts, Fehr, Bolton, Hill,
Morovitz, Krieg, Fitzgerald, Meyer, Cameron, Farbman, Kopman, Clancy, Goodman.

Wanderlust Club

First Semester	OFFICERS	Second Semester
Grace Fehr	President.....	Blanche Schweitzer
Helen Beattie.....	Vice-President.....	Evelyn Haule
Bernice Baskin.....	Secretary.....	Elizabeth Piscopink
Nell Lawrence.....	Treasurer.....	Edna Tenkenohy

MEMBERS

Louise Ball
Bernice Baskin
Helen Beattie
Marie Brady
Genevieve Burns
Arvilla Bushey
Margaret Cameron
Marion Cameron
Florence Chaffee
Mary Clancy
Hilda Daske
Margaret Davey
Rose Ellias
Lillian Farbman
Helen Vairo
Elizabeth Farland
Dorothy Frietag
June Gage
Marion Gassel
Carol Goodman

Bernadette Grant
Marcella Grant
Ruth Guether
Isabelle Hill
Evelyn Houle
Ruth Howern
Grace Kingsley
Anne Kopman
Bernice Krieg
Virginia Wagner
Dorothy Tomkins
Caroline Lampont
Nell Lawrence
Mildred Lemke
Mary McElroy
Ann McLaughlin
Katherine McLogan
Lotta McMillan
Rosemary Matgen
Veronica Meyer

Helen Morovitz
Eva Mutton
Francis Newman
Eleanor Oll
Mabel Wagen
Ella Ott
E. Piscopink
Jean Ramsey
Minnie Ronn
Florence Schaufel
Marion Schulte
B. Schweitzer
Jennie Seeman
Gladys Shedd
Muryel Spedding
J. Stauffer
Ruth Stein
Alice Stover
Edna Tenkonohy
Georgia Werts



Simone, VanDeventer, Simms, Gillies,
Mayrend, McLaughlin, Cohen, Brown, Pearlman.

Men's Club

First Semester	OFFICERS	Second Semester
Cecil Cox.....	President.....	Charles McLaughlin
Arthur Hill.....	Vice-President.....	Leon Spalter
Lyle Van Deventer.....	Secretary.....	Walter Nichols
Claude Going.....	Treasurer.....	Earl Mayrend
E. G. Blackstone.....	Faculty Adviser.....	Trevor Muffitt

MEMBERS

Clarence Beeman
Ted Blakely
William Brown
J. Wilbur Chapman
Sollie Cohen
Maurice Dombey
Joseph Gillies
Harold Glassford

Claude Going
Arthur Hill
Orrin Hill
Eugene Hopusch
Paul Kerber
Charles Little
Earl Mayrend
Charles F. McLaughlin

Charles W. McLaughlin
Michael Mishlin
Walter Nichols
Jack Pearlman
Leon Spalter
Harold Simms
Joseph Simons
Lyle Van Deventer



K. Cole, M. Beier, M. Mattison, P. Gillett, V. Grafton, A. Aust, D. Sullivan, M. O'Hagan, J. Kruszewski, J. Paull, B. Elder, R. Guenther, L. Guerin, L. Farbman, B. Osborne, A. Wolfort, M. Guichard, P. Rohrer, H. Luttermoser, E. Murphy, J. Seemon, E. Bero

Choral Club

OFFICERS

Pauline Gillet	President
Grace Kissane	Vice-President
Betty Zussman	Secretary
Elizabeth Bero	Treasurer

MEMBERS

Angeline Aust	Melite Guichard	Joyce Paull
Helen Ball	Margaret Hartford	Marjorie Peoples
Hazel Baskin	Esther Huckle	Juanita Ports
Mildred Beier	Helen Kay	Marguerita Riley
Elizabeth Bero	Alice Kennedy	Pauline Rohrer
Cora Brown	Grace Kissane	Florence Schaufele
Katherine Cole	Alicemay Knack	Margaret Scovia
Marion Deuton	Josephine Kruszewski	Jennie Seeman
Mathilde Eckert	Helen Luttermoser	Dorothy Sullivan
Beatrice Elder	Angela MacHale	Mary Townsend
Lillian Farbman	Mildred Mattison	Esther Travis
Pauline Gillett	Goldie Moore	Florence Ware
Virginia Grafton	Emily Murphy	Helen Whittaker
Ruth Guenther	Marie O'Hagan	Pauline Wetzell
Lenore Guerin	Bonnie Osborn	Agnes Wolfort
Maude de Guichard	Mella Parrett	Betty Zussman



Schroeder, Seidel, McLaughlin, Cary, Kerber, Hayes, Pelliter, Gussin, Ouslander, Wellington, Veslock, Layne, Fitzpatrick, Reynolds, Fischer, Gorden, Arndt, Lavine, Schuster, Looby, Wasney, Goodeyne, Allingham, Edstrom, Perperno, Kolufsky, Milford, LeFevere, Gassel, Robbins, Wiedmeyer, Brown, Simone, Clancy, Kopman, Klein Rubens, Milford.

Junto Club

OFFICERS

First Semester	OFFICERS	Second Semester
Mrs. M. Wiedmaier	President	Mrs. Fannie Brown
Joseph Simone	Vice-President	Mrs. M. Wiedmaier
Mary Clancy	Secretary	Alice Phillips
Grace Kissane	Treasurer	Joseph Simons

MEMBERS

Mrs. Adams	Hortense Goddeyne	Helen Meisel	Margaret Shroeder
Dorothy Allingham	Thelma Gordon	Amanda Nelson	Harold Simms
Mrs. Axtell	Clara Gussin	Francis Newman	Fay Smarinsky
Julia Arndt	Helen Hayes	Elizabeth Neyer	Phyllis Skiffington
Mrs. Brown	Dorothy Honce	Jeanette Oslander	Rebecca Schuster
Elizabeth Brownson	Rose Iberman	Milla Parrett	Blanch Schweitzer
Louise Berger	Augusta Kline	Dorothy Pensler	Edna Seidel
Ethel Chover	Paul Kerber	Dorothy Robbins	Ethel Schroeder
Wilber Chapman	Alice Kennedy	Grace Ruben	Gladys Tobin
Mary Clancy	Emerita Kolofsky	Emily Ray	Marie Veslock
Pollye Claypoole	Morris Layne	Dorothy Rabinovich	Lyle Van Deventer
Ruth Chavey	A. La Fevre	Lillian Reynolds	Virginia Wagner
Sylvia Cary	E. LeVine	Elizabeth Rapsey	Irene Wellington
Elizabeth Cassell	Kathleen Looby	Louise Raynor	Frances Wosney
Mrs. Edstrom	Charles McLaughlin	Mary Rosenthal	Mabel Wangen
Marguerite Fitzpatrick	Artis Milford	Joseph Simone	Marie Weidmar
Marion Gassel	Byre Milford	Victoria Seifman	Ruth Young
Ethel Goldman	Ada Marsh	Ethel Sandberg	Betty Zussman



Ladd, Smith, West, Hill, Sawyer, Crudden, Stauffer, McColl, Greig,
 Seidel, Mason, Leipham, L'Hote, Kunkel, Clark, Hurd, McArdle, Oakes, Pearson,
 Anderson, Crotty, Moore, Kennedy,
 Phillips, McDonald, Oil, Nahikian, Whitaker, Lowther, Desson, Wolfschlager,

Outdoor Club

First Semester	OFFICERS	Second Semester
Hilda Daske.....	President.....	Ruth Lowther
Rena McCall.....	Vice-president.....	Perooze Nahikian
Mary Smith.....	Secretary.....	Marion Pearson
Betty Sawyer.....	Treasurer.....	Margaret McAllister
Mary Wolfschlager.....	Sergeant-at-arms.....	Mary Wolfschlager

MEMBERS

Iris Ladd	Myrth Mason	Marion Pearson
Margaret Anderson	Anita McArdle	Alice Phillips
Catherine Allen	Mable Crotty	Perooze Nahikian
Margaret Clark	Hilda Daske	Virginia Spain
Harriet Crudden	Evelyn Evers	Elizabeth Sawyer
Katherine Doemling	Grace Hill	Josephine Stauffer
Minnette Desson	M. Evon	Mary Wolfschlager
Dorothy Dykstra	Ruth Hurd	Helen Whittaker
Florence Grieg	Rena McCall	Allison Kunkel
Katherine Guinness	Eleanor Oil	E. L'Hote
Clarissa James	Mary Smith	Adelaide Smith
Margaret Leipham	A. Hurley	M. Russell
Ruth Lowther	Agnes Swan	Iren MacDonald
A. West	Edna Seidel	Gladys Eastcott
Esther Moore	Alice Kennedy	Esther Kennedy
Carol MacKelcan	Argenta Oakes	



Ryan, Nester, Breen, Palmer, Hewett, Hull, Munson, Agopian, Theisen, Elliot, Adair,
 Burgan, Kelleher, Schmiedtel, McLogan, Higgins, Grant, Vairo, Frictag, Shea, Lapmort,
 Gerard, Sheifman,
 Rogers, Cooper, Beier, Fay, Wade, Stevens, Callahan, Goodman, McEllroy, Burns,
 Paull, Clancy,
 Hensy, Burns, Paddock, Shoecraft, Hushen, Chaffee, Riese, Schulte, Lord, Rowe, Barrie.

Sporting Club

First Semester	Officers	Second Semester
Katherine McLogan.....	President.....	Ellen Hushen
Joyce Paull.....	Vice-President.....	Alice Shoecraft
Teresa Breen.....	Secretary.....	Helen Paddock
Genevieve Burns.....	Treasurer.....	Lucile Burns
Florence Chaffee.....	Chairman Social Committee.....	Leonella Shea

MEMBERS

Lillian Agopian	Glendora Forshee	Leonella Shea	Eugenia Hewitt
Ferne Adair	Florence Gerlock	Olive Shoecraft	Claudis Hensley
June Baker	Ethel Phillips	Sylvia Schwartz	Dorothy Howland
Ethleen Barrie	Jane Palmer	Helen Stevens	Rosemary Higgins
Mildred Beier	Lillian Wilkinson	Ethel Theisin	Rose Kelleher
Alice Burgan	Helen Paddock	Helen Vetal	Vera Lord
Lucille Burns	Joyce Paull	Caroline Lamport	Dorothy Marlowe
Genevieve Burns	Nettie Rhodes	Dorothy Workman	Mary McElroy
Teresa Breen	Esther Reiss	Gertrude Nestor	Katherine McLogan
Florence Chaffee	Estelle Rogers	Beatrice Wade	Margery Mack
Mary Clancy	Hazel Rowe	Helen Vairo	Helen Morse
Kate Connelly	Monica Ryan	Gertrude Gerard	Eva Munson
Eleanor Calahan	Victoria Sheifman	Carol Goodman	Elizabeth Neyer
Josephine Cooper	Florence Stevens	Bernadette Grant	Helen Nestor
Helen Elliott	Evelyn Steadman	Marcella Grant	Ella Ott
Dorothy Freitag	Marion Shulte	Margaret Hull	Isabelle Wilson
Ruby Fay	Theresa Schmittiel	Ellen Hushen	

ADVISERS

Miss Gratton	Miss Henzie	Miss Jacobs
--------------	-------------	-------------



Stauffer, Oll, Gabriel, Schwartz, Reiss, Desson, McLogan,
 Van Norman, Aronstam, Wright, Sawyer, Townsend, Rogers,
 Brady, Henderson, Skiffington, Archbold, Sadler, Leventen, Fox, Sanichas, Whittaker.

Dramatic Club

First Semester	OFFICERS	Second Semester
Mary Wright.....	President.....	Marion Schulte
Geneva Denio.....	Vice-President.....	Helen Whittaker
Helen Whittaker.....	Secretary.....	Majel Sanichas
Minnette Desson.....	Treasurer.....	Mary Wright

MEMBERS

Estelle Rogers	Henrietta Sadler	Elizabeth Sawyer
Ruth Archbold	Miriam Gabriel	Sylvia Schwartz
Faye Aronson	Dorothy Henderson	Marion Shulte
Theodora Aronstam	Lily Leventen	Phyllis Skiffington
Lydia Bescancon	Katherine McLogan	Josephine Stauffer
Ruth Brady	Celestine Minard	Leona Townsend
Minnette Desson	Eleanor Oll	Helen Whittaker
Florence Fox	Esther Reiss	Mary Wright
Margaret Garrett	Majel Sanichas	

Little Women

With the presentation of Louisa M. Alcott's "Little Women," adapted by Marian DeForest, the Dramatic Club has established an annual custom.

CAST OF CHARACTERS

Jo	Helen Whittaker
Meg	Mary Wright
Beth "The Little Women"	Majel Sanichas
Amy	Florence Fox
"Marmee"—Mrs. March	Eleanor Oll
Hannah Mullett, a Servant.....	Henrietta Sadler
John Brooke	Elizabeth Sawyer
Laurie	Estelle Rogers
Mr. Laurence	Josephine Stauffer
Aunt March	Lily Leventen
Mr. March	Margaret Garrett
Professor Bhaer	Leona Townsend
Director	Miss Eloise Ramsey
Director of Orchestra.....	Miss Harriet Petry

Detroit Teachers College Orchestra

Art Advisers (costumes and stage).....Miss Una DeVoe

Business arrangements directed by

Miss Ida E. Gratton
 Miss Mildred Connelly
 Miss Jennie Boyer

COMMITTEES

General Chairman	Sylvia Schwartz
Chairman—Publicity	Leona Townsend
Chairman—Costumes	Esther Reiss
Chairman—Arrangements for the production of the play.....	Theodora Aronstam
Property Manager	Katherine McLogan
Stage Manager	Minnett Desson



Gordon, Reno, Wanger, Guichard, Murphy, Knack, Wheeler, Mullen, Stover.
 Weber, Elias, Webster, Schuster, Hinkle, Klees, Fisher, Spedding, Kreig, Fehr, Guichard,
 Connelly.
 Ward, Heide, Guck, McLaughlin, Harris, Elliot, Munk, Levine, Brohl, Heimann, Palmer,
 Hackett, Shapiro.
 LeFevre, Bignell, Farland, Archbold, Sullivan, R., Munson, Hewitt, Fay, Hull, Sadler,
 Wells, Robbins, Singer, Sullivan, C.

Rural Club

Bessie Munk	President
Dorothy Hinkle	Vice-president
Maude Guichard	Secretary
Elizabeth Farland	Treasurer

COMMITTEES

Alice May Knack	Ways and Means
Emily Murphy	Social
Eva Munson	Program
Melite Guichard	Publicity
Helen Elliot	Service



L. Townsend, D. Hinkle, E. Jackson, C. Lamport,
 R. Wells, R. Archbold, H. Sadler

Second Annual

Rural Club Carnival



R. Howland, E. Farland, H. Sadler, N. Lawrence



Parrot Staff

C. Huffman	M. Gabriel	E. Brownson	M. Shulte
	L. Van Deventer	J. W. Chapman	
D. Robbins	G. Lindeman	R. Archbold	A. Kopman

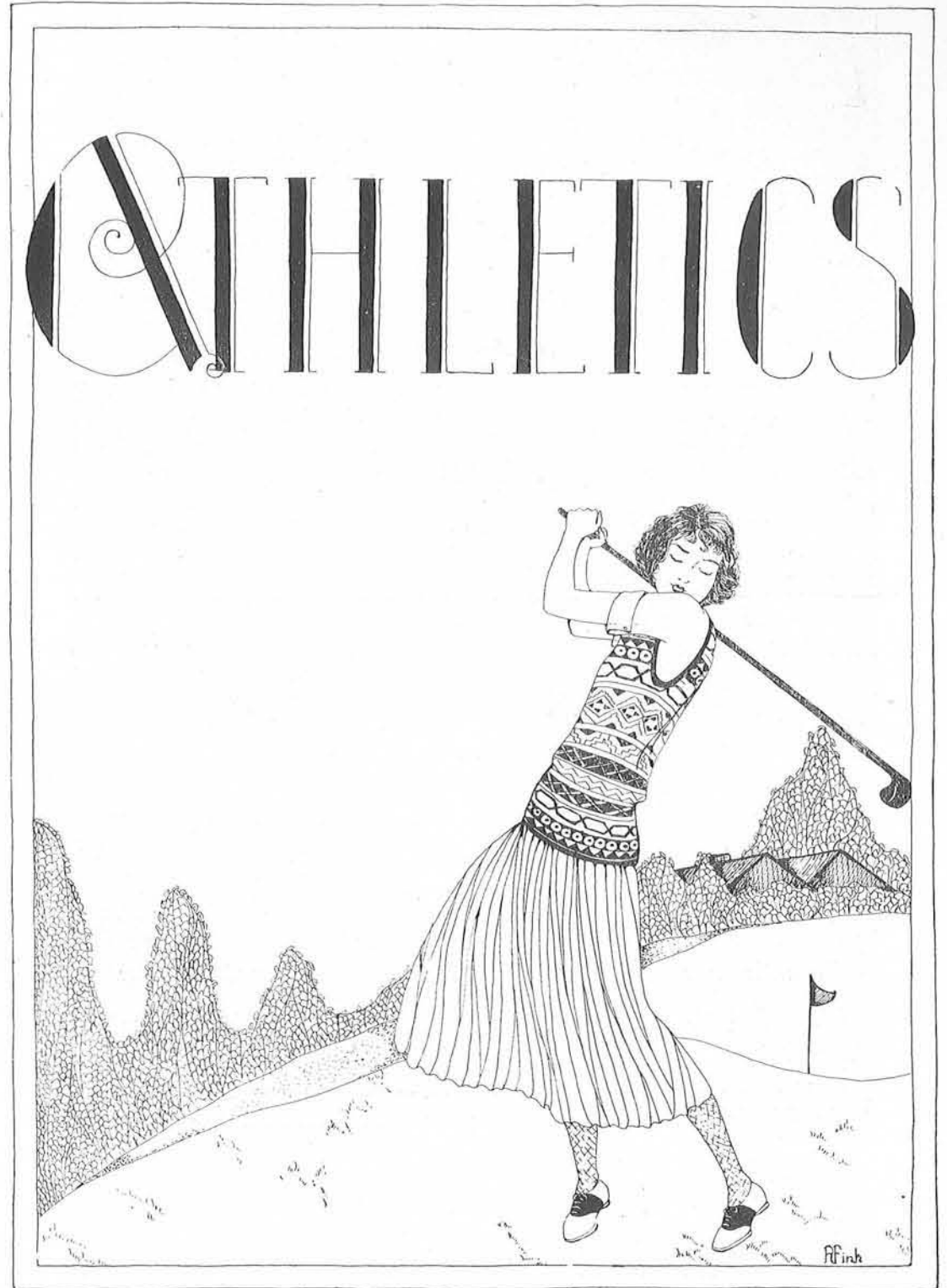
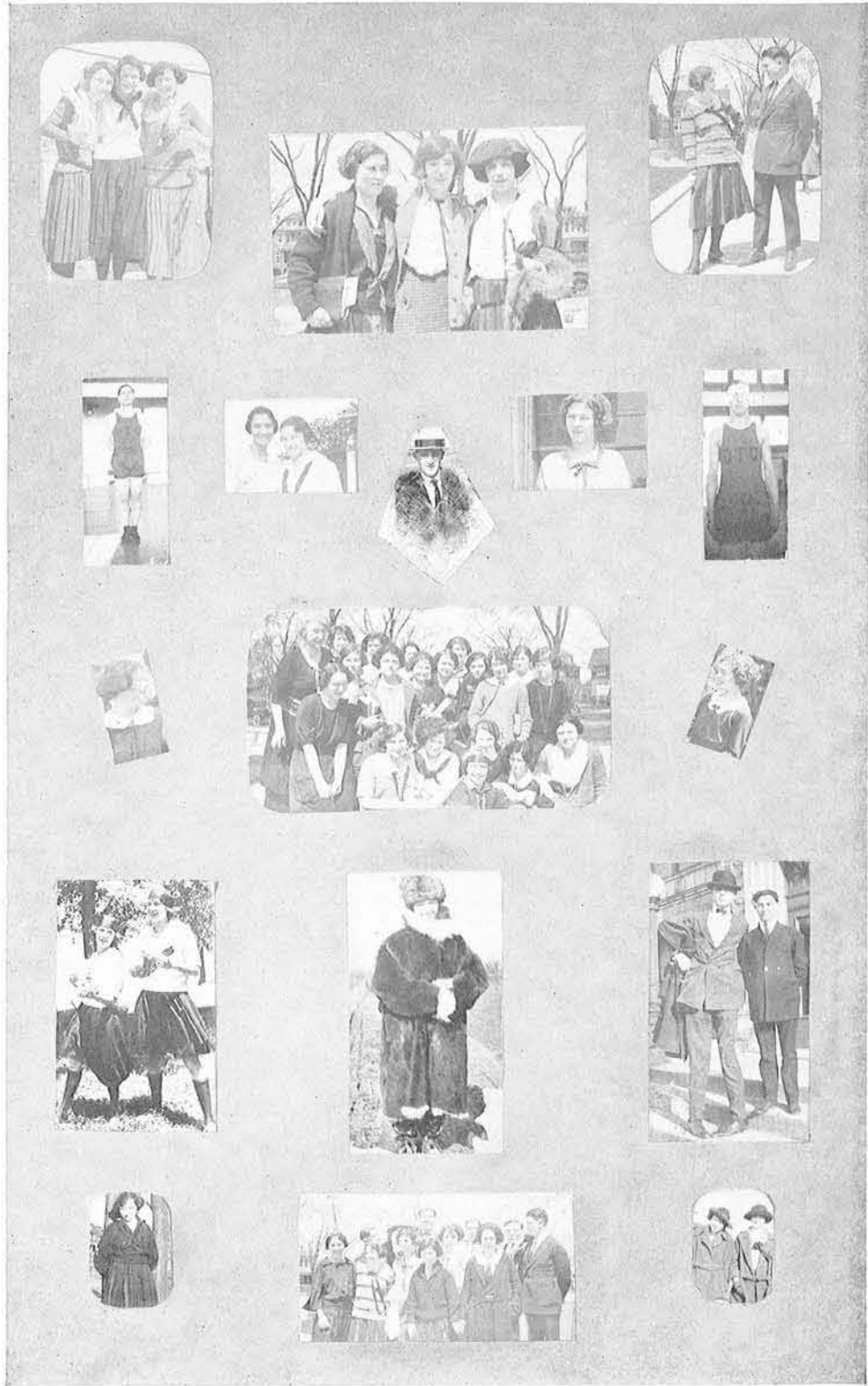
The 1923 Parrot

EDITORIAL

J. Wilbur Chapman.....	Editor
Elizabeth Brownson	Associate Editor
Miriam Gabriel	Literary Editor
Ruth Archbold	Society
Gladys Sillman	Features
Marion Beth Shulte	Humor Editor
Clara Huffman	Art Editor
Anne Hopman	Snaps
Grace Lindeman	Pictures
Lyle VanDeventer	Athletics
Miss Ida E. Gratton.....	Adviser

BUSINESS

C. Arthur Blakely.....	Business Manager
Esther Liefeld.....	Assistant Manager
Dorothy Robbins	Advertising Manager
Charles McLaughlin	Assistant Manager
Barbara Nale	Circulation Manager
Charles E. Elliott	Adviser





McElroy, Crudden, Schwartz, Wertz

Woman's Athletic Association

First Semester	OFFICERS	Second Semester
Josephine Stauffer.....	President.....	Harriet Crudden
Mildred Beier.....	Vice-President.....	Mary McElroy
Nell Lawrence.....	Secretary.....	Sylvia Schwartz
Mollie Zebrak.....	Treasurer.....	Georgia Wertz



Wertz, Crudden, O'Maley, Oll, Pearson,
Stauffer, Daske (captain), Chaffee, McElroy.

Women's Basketball Team

First Team		Second Team
Florence Chaffee.....	Center.....	Gertrude O'Maley
Georgia Wertz.....	Side-Center.....	Rena McColl
Josephine Stauffer.....	Guard.....	Helen Vetal
Eleanor Oll.....	Guard.....	Dorothy Howland
Hilda Daske.....	Forward.....	Harriett Crudden
Mary McElroy.....	Forward.....	Marian Pearson

Calendar of Games

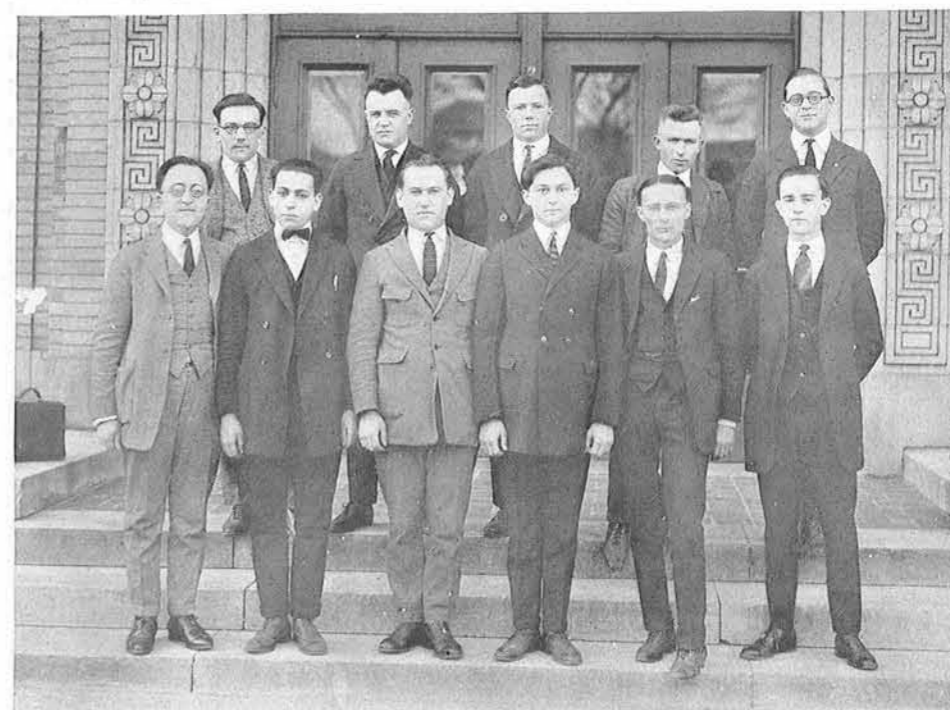
Date	Opponent	D. T. C.	Opponent	Place
Feb. 16	Detroit Junior College.....	18	24	D. J. C.
Feb. 20	Highland Park Junior College.....	52	19	D. T. C.
Mar. 5	Detroit Junior College.....	19	16	D. T. C.
Mar. 14	Highland Park Junior College.....	69	12	H. P. J. C.
Mar. 22	Y. W. C. A.....	28	20	D. T. C.



Crudden, Schwartz, Wisner, Kunkel, Beath, Vetal.

Swimming Team

Coach	Miss Marie Henze	
Captain	Harriet Crudden	
Betty Bomstein	Jessie Nasbaum	Louise Yentsch
Harriet Crudden	Ardis Wisner	Allison Kunkel
	Helen Vetal	



Mayrend, Kerney, Rex, Cox, VanDeventer,
Michlin, Cohen, Pearlman, Brown, Simone, McLaughlin.

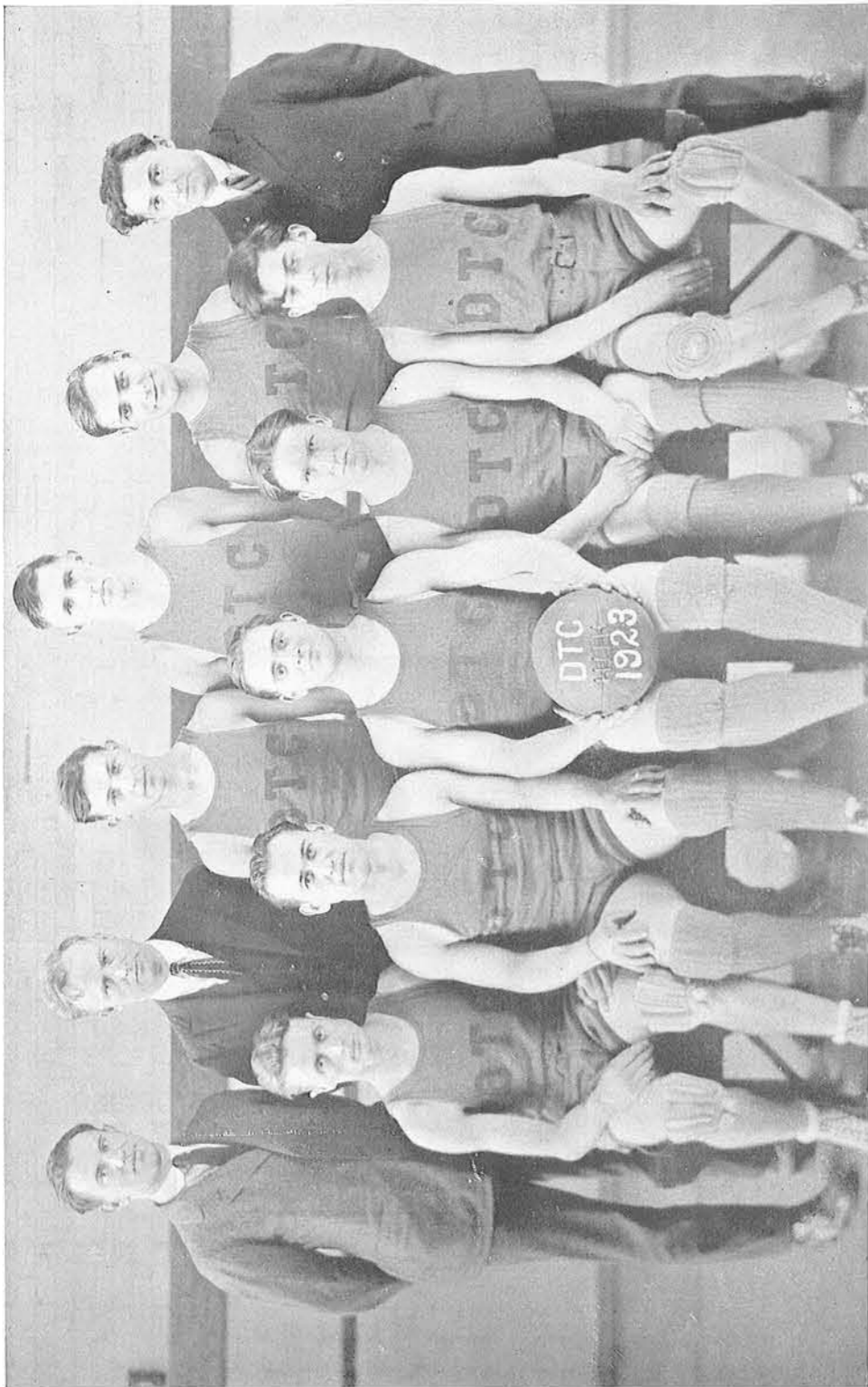
Men's Athletic Association

OFFICERS

Arthur Hill	President
Charles McLaughlin	Vice-President
Jack Pearlman	Secretary
Joe Simone	Treasurer
Leon Spalter	Sergeant-at-arms

MEMBERS

Alfred Allen	Arthur Hill	Walter Nichols
Gordon Allen	Orin Hill	Harold Parkin
Clarence Beeman	Eugene Hopusch	Jack Pearlman
C. Arthur Blakely	Paul Kerber	George Rex
William A. Brown	Thomas Kerney	Joe Simone
J. Wilbur Chapman	Maurice Layne	Harold Simms
Sollie Cohen	Charles Little	Leon Spalter
Maurice Dombey	Oswald Ludwig	Walter Stickney
Joseph Gillies	Earl Mayrend	Albert Tannebaum
Harold Glassford	Charles McLaughlin	Lyle Van Deventer
Claude E. Going	Charles McLaughlin	Floyd Williams
Uno Heggblom	Michael Michlin	John Woods
John Herman		Elbert Wright



C. Beeman, E. McFarland, A. Tannenbaum, P. Kerber, A. Hill, W. Brown,
J. Chapman, J. Pearlman, L. VanDeventer, J. Gillies, L. Spalter.

Men's Basketball Team

Clarence E. Beeman.....Coach
 E. W. McFarlandAthletic Director
 Lyle Van DeventerCaptain
 Wm. A. BrownManager

J. Wilbur Chapman	Paul Kerber	Leon Spalter
Morris Cohen	Earl Mayrend	Albert Tannenbaum
Joseph Gillies		Lyle E. Van Deventer
Arthur Hill	Jack Pearlman	Elbert Wright

The Season's Summary

Date	Opponent	D. T. C.	Opponent	Place
Jan. 5	Detroit College of Pharmacy.....	22	11	Y. M. C. A.
Jan. 12	Faculty	20	10	D. T. C.
Jan. 16	Highland Park Junior College.....	18	27	H. P. J. C.
Jan. 19	Detroit College of Pharmacy.....	15	9	D. T. C.
Jan. 25	Bay City Junior College.....	16	13	D. T. C.
Jan. 30	Detroit College of Law.....	11	16	Y. M. C. A.
Feb. 9	Pontiac Junior College.....	8	24	D. T. C.
Feb. 14	Cass College of Pharmacy.....	31	4	D. T. C.
Feb. 20	Highland Park Junior College.....	13	12	D. T. C.
Feb. 23	Bay City Junior College.....	11	23	B. C. J. C.
Feb. 26	Detroit College of Law.....	10	16	D. T. C.
Mar. 1	Assumption College	10	37	D. T. C.
Mar. 6	Cass College of Pharmacy.....	2'	18	Cass High
Mar. 10	Pontiac Junior College	10	19	P. J. C.
Mar. 16	Detroit College of Pharmacy.....	19	18	D. T. C.
Mar. 20	Detroit Attendance Department	25	16	D. T. C.
Games won				9
Games lost				7
Season's average563

Women's Hockey Team

Name	Position
Dorothy Howland	C. F.
M. Beath	L. I.
Hilda Daske	L. W.
Josephine Stauffer	R. I.
Alice Evans	R. W.
Ruth Binney	C. H.
Mary McElroy	R. H.
Helen Vetal	L. H.
M. Orr	R. J.
Lucille Burns	G. K.
May Jackson	Sub.
A. McArdle	Sub.

SCHOOL ELECTION

(Election controlled by group of dirty politicians).

BOYS

Mutt and Jeff	Ted Blakely and Chas. McLaughlin
Classiest Dresser	Maurice Layne
Freshest Freshie	Maurice Cohen
Laziest Lounger	Leon Spalter
Biggest Bluffer	Harold Simms
Greasiest Grind	Bill Brown
Noisiest Nut	J. Wilbur Chapman

GIRLS

Mrs. Vernon Castle	Genevieve Burns
Worst Man-hater	Jean Siedel
Greatest Giggler	Rena McCall
Prettiest Peach	Eleanor Oll
Vain Vampire	Marion Schulte
Most Popular	Josephine Stauffer
Meekest Maid	Emelia Brandau
Stubbornest Stub	Estelle Rogers

FACULTY

Best "All Around Good Fellow"	Mr. McFarlane
Easiest to Bluff	Mr. Muffet
"Preacher"	Miss Fiero
Forgets to Assign Lessons	Mr. Blackstone
Our "Mother"	Miss Osborn
Easiest to Worry	Mrs. Omans
The Coldest Hearted	Mr. Magee
The Warmest Hearted	Miss Hubbard

OUR OWN LITTLE INTELLIGENCE TEST

(To be given to incoming faculty and freshmen next Sept.)

1. Why is a practice school?
2. Describe pot-luck in eight words.
3. Locate the tunnel, blindfolded.
4. Marr is a country, nut, insurance, school, land (underline correct word).
5. If three bales of hay cost three cents a cubic pound, how many pigs can inhabit a swimming pool 7x13-181 feet?
6. Where were you born and why?
7. Who was Hot Dog? What did he do for his country?
8. Who is responsible for the following sayings?
 - "Never cross a bridge 'til you're sure it's safe."
 - "I'd walk a mile with a camel."
 - "Don't give up the pony, boys."
 - "I only regret that I have but ten finger-nails to feed my starving stomach."
 - "A scratch in time saves itching."
9. Rearrange, and state whether true or false: Get and the as we ain't see from which those gouloushes fruit.
10. If you pass this test, answer no; if not, answer no; if either, answer no; and if both, answer no. The second installment of this test will be given at the end of the first nine weeks.

WEYHING BROS. MFG. CO.

"Jewelers of the Better Kind"

Official Jewelers to the Detroit Teachers College.
Michigan's largest class pin and ring manufacturers.
Weyhing gold and silver are of dependable quality.
Special designs and prices cheerfully submitted on request.

1507 Woodward Ave.
3rd Floor Annis Fur Bldg.
Detroit, Mich.

Die and Stamping Dept.,
Gratiot and McDougall

Marion Schulte: "I wish to ask a question concerning a tragedy."
Miss Hubbard: "Well?"
Marion Schulte: "What is my mark?"

Miss Ramsey: "Why were you late this morning?"
Gen. Burns: "The bell rang before I arrived."

"Why don't you speak?" asked the hoe.
"Why, the lawn mower said something cutting to the rake," answered the sickle.

PAUL'S HAIR SHOP

1500 Woodward Avenue

Permanent Waving

MANICURING
MARCELLING

Main 720
Cherry 2616

Established 1905

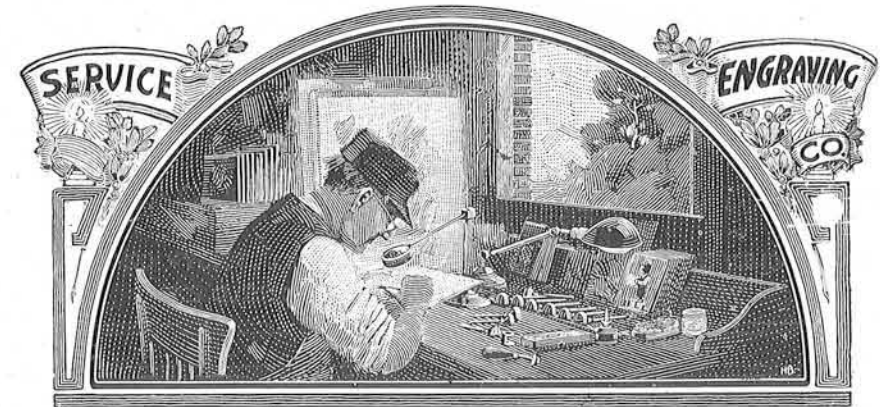
Insured Storage

THE MEYERS CO.

Manufacturing Furriers

6517 Grand River Ave., at Boulevard
Phone Garfield 1527

Furs Remodeled, Repaired, and Stored
We are out of the high rent district and
can save you 25 to 40%



Education is but the foundation stone upon which an intelligent and well balanced life is built.

Engravings are the foundation of good printing. If the engravings are well made, the printer can build up a work of Art. We specialize in the making of the Better Printing Plates.

SERVICE ENGRAVING COMPANY

529 CONGRESS STREET WEST

Old Lady: "Oh, conductor, please stop the train. I dropped my wig out of the window."

Conductor: "Never mind, madam, there is a switch just this side of the next station."

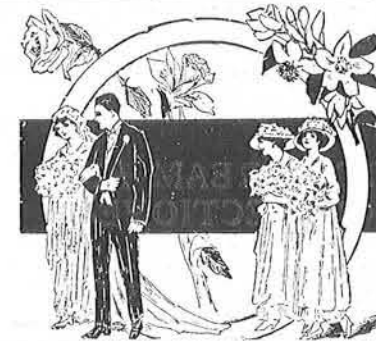
Fern Adair: "Are you going to class tomorrow?"

Helen Harrison: "Do you think I'll be a nut and bolt?"

Teresa Breen: "Where will we go for our honeymoon?"

He: "To Niagara Falls."

Teresa: "Is that place still running?"



Beard Floral Co.

FLOWERS

for the bridal party

Properly selected—Properly arranged

6519 Grand River Avenue

Opposite the High School

DINING AND DANCING
AT THE
EASTERN STAR CAFE

GRAND RIVER AT BOULEVARD
**THE MOST POPULAR PRICED RESTAURANT IN THE CITY
SERVING THE BEST**
DINNER, \$1.00; Every Evening First Class SOCIETY ORCHESTRA
TAKE AN ORDER HOME TONIGHT—GARFIELD 2917

JOS. N. ESPER

Dealer in

COAL AND WOOD

Phone Walnut 2049

6003 Michigan Ave.

Eleanor Malow: "I have so much on my hands at present I don't know what to do."

Grace Lindeman: "Why not try some soap and water?"

Eleanor Oil: "Why do you call your dog Kodak?"

Caroline Lamport: "Because he takes a snap at everyone he sees."

Teacher: "How many ribs have you?"

Hilda Daske: "I don't know. I'm so awful ticklish I couldn't count them?"

The Ferry Hat Shop

Lydia Lentz

6533 Grand River Ave.

Garfield 0475

Detroit, Mich.

Candies

Sodas

A. VATECK

**ICE CREAM AND
CONFECTIONERY**

6549 Grand River Avenue West

NORTHWESTERN HIGH SCHOOL CAFETERIA

MENU, 1 Day

SUBJECT TO CHANGE

PLATE DINNER

Roast Beef
Mashed Potatoes and Gravy
Vegetable
Bread and Butter
Pudding
Coffee

25c

Potato Salad

Soup

Rolls and Butter

15c

SPINACH 6c
CREAMED ONIONS 5c
BUTTERED CARROTS 5c
STEWED TOMATOES 5c
SPAGHETTI 8c
LIBERTY POTATOES 6c
APPLE COBBLER 6c
PRUNE WHIP 8c
CUSTARD 6c
CHOCOLATE PUDDING 6c
STRAWBERRY SHORTCAKE 10c

TEA 5c ICE CREAM 6c
COFFEE 5c VARIETIES OF CAKE 5c
MILK 5c ORANGES 5c
GRAPE JUICE 5c APPLES 5c
ORANGEADE 5c CANDY 5 and 10c

CHOICE OF EIGHT DIFFERENT KINDS OF PIE 6c

We use Fresh Vegetables and Fruit whenever obtainable

A Satisfied Customer Is Our Aim

MRS. J. DAWSON

Manager

WITH THE COMPLIMENTS OF
UNO S. HEGGBLOM, '23
 ATTORNEY and COUNSELLOR AT LAW
 619 MOFFAT BUILDING
 CHERRY 8382
 DETROIT

A HOUSE OF GOOD SERVICE
 MILLING MACHINE ARBOR SPACERS
 "DeSta-Co" Card Holders, Sheet Metal Stampings
 Special Washers and Dies Radio Parts

DETROIT STAMPING CO.
 3445-59 West Fort St. Phones West 2747-0382

Miss Worden: "Florence, how long did you study last night?"
 Chaffee: "One hour, railroad time."
 Miss Worden: "What do you mean—railroad time?"
 Chaffee—Oh, that's including stops and delays."

Betty: "Going to the library this hour?"
 Jean: "No, I've got to study."

Marion Schulte (practicing teaching): "Now, boys, I want you to be so quiet that you can hear a pin drop."
 (Death-like silence).
 Voice from rear: "Let her drop."

Lives of seniors all remind us
 We must strive to do our best,
 And, departing, leave behind us
 Notebooks that will help the rest.

As he looked in the mirror
 He had to confess
 The end of his nose
 Was a shining success.

Conductor: "Your fare!"
 Ellen Hushen: "Do you think so?"

We have no branch houses or connection
 with any other markets in city
 Phones: Main 7124-4660

George H. Giddey
 58 Cadillac Square

LAKE FISH, FROGS, LOBSTERS,
 SHRIMPS SCALLOPS
 SHELL OYSTERS CLAMS
 This is a GOOD place to buy brain food

DIRECT FROM LONDON



Imported Lisle Hose
Checks — Stripes — Ribbed

WHITE SHOES NOW READY
 For Morning — Afternoon — Evening
 Low Heels — Medium Heels — High Heels

CARRINGTON
 INCORPORATED

Book Building 1239 Washington Blvd.

Small Boy: "Mother, may I go out and play now?"
 Mother: "What, with those holes in your stockings?"
 Small Boy: "No, with the kids next door."

Betty Sawyer: "Yes, they have been going together for years."
 Mary Wright: "Who?"
 Betty Sawyer: "Your feet."

AFTER THE FALL

Observant Kiddy: "Oh, look at that funny man, Mother. He's sitting on the sidewalk talkin' to a banana peel!"—Siren.

Miss Wedin: "How many found today's lesson a hard one?"
 Lillian Lewis: "I didn't."
 Miss Wedin: "Why not?"
 Lillian Lewis: "I didn't do it."

Agnes Renton: "What kind of soup is this?"
 Waiter: "It's bean soup, Miss."
 Agnes Renton: "I don't care what it's been. What is it now?"

NORTHWESTERN
PRINTING CO.

Printers-Publishers

LAWTON AVENUE AT STANLEY

Job Printing of All Kinds

House Organs,
Church and Society Publications,
Year Books, Posters, Etc.

PHONE WALNUT NINE EIGHT

Theresa Breen: "Please take your seat!"
Precocious Child: "Where will I take it to?"

He: "Would you scream if I kissed you, Little Girl?"
She: "Little girls should be seen and not heard."—Gargoyle.

She: "It takes my breath away to go down in a fast elevator."
He: "I get the same effect by eating life savers."—Widow.

"My good man, you had better take the trolley car home."
"Sh' no ushe! My wife wouldn't let me—hic—keep it in th' houshe."—
—Banter.

3500 West Warren Ave.

6525 14th Ave.

LeFEVRE-SIESS CO.

SHOES

Family Shoe Store

6816 Gratiot Ave.

3147 Grand River Ave.

Velvet SMILES



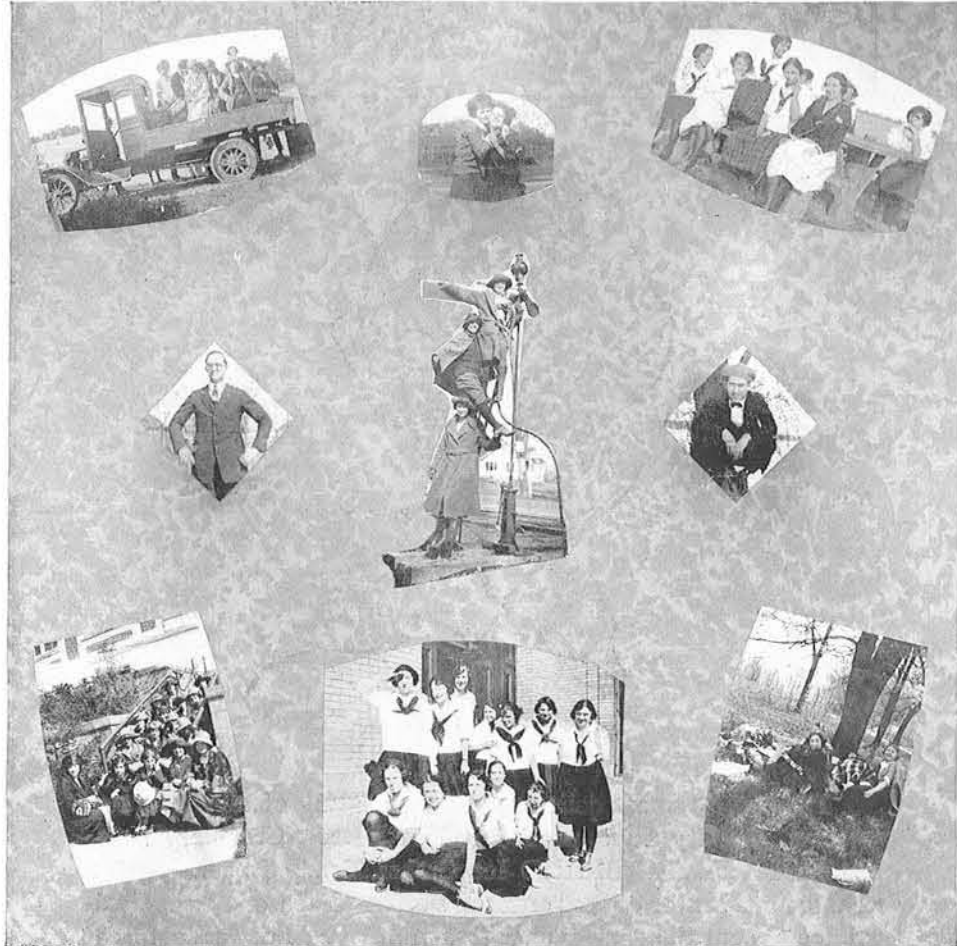
The newest, most delicious and fascinating of all Ice Cream delights. Dainty Cups, packed full of Detroit Creamery's old-fashioned VELVET BRAND Ice Cream, firmly frozen—with a rich, luscious center of **real crushed Fruits**. Each one an individual Ice Cream Sundae—sealed tight until you are ready to eat it. A handy little spoon comes with each cup of "Velvet Smiles."

For parties and impromptu desserts—for the children—for everyone—any time—any place—they're wonderful.

On sale wherever VELVET BRAND Ice Cream is sold. Ask your druggists or confectioner for "Velvet Smiles."

DETROIT CREAMERY

Autographs



Autographa

Autographa

Autographs