

Pharmacy College Seniors



Edmunds

Whyard

Wisniewski

Class Officers

Alphaus C. Edmunds.....*President*  
 Marcus Schwartz.....*Vice-President*  
 Ruth Whyard.....*Secretary*  
 Clarence Wisniewski.....*Treasurer*

Class Committees

Marcus Schwartz.....*Lilly Trip*  
 Morris Kroll.....*Baseball*  
 John Shuk-it.....*Basketball*  
 William Briggs.....*Constitution*  
 Walter Lemanski.....*Spring Dance*  
 F. S. Cooper.....*Social Chairman*

THE largest entering class in the history of the College of Pharmacy enrolled in September, 1929. Alphaus C. Edmunds was elected president and proved a popular leader, being unanimously reelected each succeeding year. The other class officers are: Marcus Schwartz, vice-president; Ruth Whyard, secretary, and Clarence Wisniewski, treasurer.

During the first two years, the class was more or less interested in the activities of the Literary school. The senior year, however, brought a desire for recognition and, under the leadership of the class, a reorganization of the college student government was accomplished.

Several social functions were sponsored during the year. The students of all the colleges were invited to the annual Pharmacy College matinee dance. A trip to the Eli Lilly Pharmaceutical House in Indianapolis was arranged and was well attended, as was the annual Parke, Davis & Company outing and dinner. The outstanding event of the year was a dinner and theatre party arranged for the entire college by the senior class. It was a huge success and plans were laid to make it a traditional event.

ARONSON, DOROTHY *Mich. L.C.*  
 Sigma Theta Delta (1, 2, 3), Financial Secretary (3); Home Room Club (2, 3); Treasurer Junior II Class (3).

AGRANOFF, CARL *B.S.*

ALLEN, IRMA F.  
*B.S. in Home Economics*  
 Freshman Commission (1); A. W. S. Cabinet (3); Home Economics Club, Treasurer (3), President (4).

APTEKAR, DAVID D.  
*B.S.; Mich. L.C.*  
 Highland Park Junior College; University of Michigan.

ASCHER, SAMUEL M. *A.B.*



ADAMS, HENRY *B.S.; Ph.C.*  
 Phi Delta Chi, President (3); Vice-President American Pharmaceutical Association (3); Collegian (2); Chairman Senior Banquet Entertainment Committee (3).

ALBION, EVELYN  
*A.B.; Mich. L.C.*

ANDERSON, LORRAINE *A.B.*  
 Junior Council (3); Representative of the Y. W. C. A. Inter-collegiate Council (3); Treasurer Y. W. C. A. (4); Model League of Nations Assembly, Parliamentarian (4).

ARNDT, GRANT F.  
*A.B. in Bus. Administration*  
 Holly, Michigan.

AHERN, RANDALL R. *A.B.*  
 Golf (1, 2, 3, 4), Captain (3); Football (1); Opera (2); Glee Club (1, 2); Senior Memorial Committee.

ADAMS, EMILY ELSIE

*B.S. in Education*

Hockey (2, 3); D. T. C. Art Club, Publicity (3), Vice-President (4); Costume Committee Junior Girls' Play (3); Junior Women's Social Committee (3).



BABEL, SIMON

*Ph.C.*



BARBAS, LEONARD

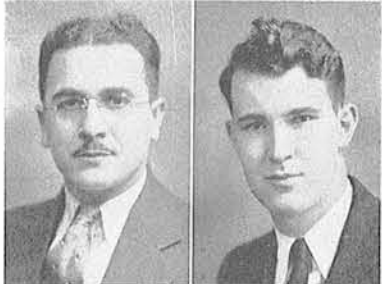
*Ph.C.*

Rho Pi Phi; President College of Pharmacy Freshman Class.



BATES, HELEN

*A.B.*



BAY, SAMSON

*A.B. in Bus. Administration*



BEAUVAIS, DAVID J.

*B.S. in Education*

Kappa Chi (1, 2, 3, 4, 5), President (4); Mackenzie Union, President (5); Sigma Delta Psi (3, 4, 5), President (4); Student Council (5); Inter-Fraternity Council (4); Track (1, 2, 3, 4), Co-captain (3); Football (4); General Chairman Field Day (3, 4); Chairman Class Games (3); Friars; Frosh Cabinet (1); Men's Health Education Major Club, Secretary-Treasurer (5); "D" Club; Soph Prom Committee (2).

BENNETT, SANFORD

*A.B.*



BENSON, CHARLES A.

*A.B.*

Gas House Gang.

BERNSTEIN, RALPH

*A.B.*

Inter-Class Debating (4); College Theatre (3, 4).

BETHEL, PORTIA ALLENA

*A.B.*



BLOMFIELD, CARL J.

*A.B.*

Kappa Chi (1, 2, 3, 4, 5), Sergeant-at-Arms (5); Class President (4, 5); Student Council (2, 3, 4, 5); Friars; Athletic Board of Control (3, 4, 5); Elections Committee (4); Chairman Football Banquet Committee (3); Varsity Football (2, 5); Freshman Football (1); Freshman Basketball (1); Gas House Gang.



BORNSTEIN, PEARL

*A.B.; Mich. L.C.*

Sigma Theta Delta, President (4); Art Guild (2, 3, 4); D. T. C. Art Club (3, 4).



BRAUN, ELSIE CAROLINE

*A.B.*



BRUSHABER, EDWARD A.

*A.B.*



BIRENBAUM, ROBERT I.

*A.B.*

Pi Tau Sigma (2, 3, 4), Treasurer (2), Secretary (3); Alpha Tau Beta, Treasurer (3), President (4); Collegian Managing Editor (2); "D" Book, Technical Advisor (2, 3, 4); Student Council (3, 4), Auditor (4), Board Student Publications (3), Elections Committee, Chairman (4); Frosh Frolic Committee (3); Director College Theatre Membership Drive (4).



BOHN, WALLACE H.

*A.B.*

Class President (2); Chairman Senior Ball (4); Chairman Elections Commission (4); Sphinx (2, 3, 4), Treasurer (3, 4); Student Council (2); Friars; College Social Committee (2); "High Links" (1); Business Staff College Opera (2, 3); Gas House Gang; Track (1, 2, 3, 4); Basketball (1, 2, 3).



BOWMAN, KATHRYN LYNN

*A.B.*

Collegian (1, 4); Class Secretary (1); Freshman Commission Secretary (1); Junior Council (3); Y. W. C. A. (1, 2), Vice-President (2); Les Precieuses (1, 2, 3), Secretary (2), President (3); Women's Editor "D" Book (3); Chairman A. W. S. S. House Party (4); Properties, "Red Mill" (2); Griffin (4).



BRIGGS, WILLIAM JOHN

*Ph.C.*

Kappa Chi; Student Council (3); Secretary Student Activities Committee (3); Pharmacy College Council (3); Charity Play Committee (3); Chairman Inter-College Council Organization Committee (3).



BURNS, VERA MARGARET

*B.S. in Education*

Alpha Tau Chi; T. C. Art Club.



BURNSTEIN, ALEX *Ph.C.*  
Rho Pi Phi.



BAKER, CAROLINE G.  
*A.B.; Mich. L.C.*  
Sigma Sigma; Glee Club (1, 2, 3);  
T. C. Senior Class Treasurer (4).



BORTMAN, ALBERT H. *A.B.*  
Griffin (4); College Art Guild, Vice-  
President (3, 4); Freshman Foot-  
ball (1).



BURNSIDE, BERTRAM G.  
*B.S. in Mechanical Engineering*  
Engineering Society (1, 2, 3, 4);  
Epsilon Sigma (1, 2, 3, 4); Inter-  
Fraternity Council (3, 4), President  
(4).



BUSH, MARIE *Mich. L.C.*  
Glee Club (1, 2); Home Room Club  
(3, 4); President Sophomore Class  
(2); Vice-President T. C. Union  
(2); Publicity Chairman T. C.  
Union (3).



BUDNITSKI, FLORENCE *A.B.*



CAREY, MARY JO *Mich. L.C.*  
Alpha Sigma Tau (1, 2, 3), Treas-  
urer (2), Secretary (3); Vice-Presi-  
dent Junior Class, T. C. (2); T. C.  
Council (2, 3); Student Council (2,  
3); Junior Girls' Play (3); Home  
Room Club (2, 3); Gamma Eta (2).



CARSON, VERLE JOHN *A.B.*  
Chega, Vice-President (3), Secre-  
tary (4); Collegian, Managing Edi-  
tor, Associate Editor (3).



CASSIDY, GEORGE L. *A.B.*  
Alpha Delta Psi (2, 3, 4); Glee  
Club (1, 2); Opera (1); Student  
Council (4); Collegian (1).



CHALFIN, ABRAHAM *A.B.*  
Alpha Mu, Treasurer (4).



COHEN, FLORENCE  
*A.B.; Mich. L.C.*  
Sigma Theta Delta, Treasurer (4).



COMMON, MARGARET GRACE  
*A.B. in Bus. Administration*



CONROY, DONNA MAE *A.B.*  
Alpha Sigma Tau, President (3),  
Vice-President (2); Student Council  
(3); Social Chairman Sophomore  
Class (2); Kindergarten Club, Vice-  
President (2); Inter-Sorority Coun-  
cil (3); Senior Banquet Committee  
(3); Art Club (4).



CROTEAU, CLAIRE *A.B.*



CUTLER, J. *A.B.*



COHEN, DORA *A.B.*



D'AGOSTINO, MARY ANNE  
*B.S. in Home Economics*  
Art Guild (1); Home Economics  
Club (2, 3, 4), Recording Secretary  
(4).



DAVIS, ABRAHAM H. *A.B.*  
International Relations Club, Vice-  
President (2), President (3); Stu-  
dent Club (3, 4); International Stu-  
dents' Group (2); Student Cosmo-  
politan Club, Executive Committee  
(3); Menorah Society (2, 3); Pi  
Alpha Phi (3); Mock Democratic  
National Convention (4); Model  
League of Nations Assembly (4).



DAVIS, LAWRENCE *Ph.C.*  
Collegian (1); Track (1); Detroit  
Institute of Technology (4, 5).



DEMELLO, AGNES SYLVIA *A.B.*

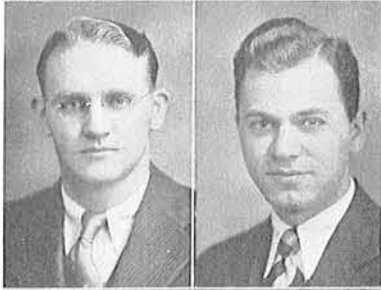




DICKMAN, HARRY M. *B.S.*  
Captain Boxing Team (3, 4); Manager Senior Inter-Class Swimming Team.



EDMUNDS, ALPHAS CHARLES  
*Ph.C.*  
Phi Delta Chi; Class President (1, 2, 3); President Pharmacy College Student Council.



FARBER, SAM *A.B.*



FINKELSTEIN, SADIE G.  
*A.B.; Mich. L.C.*  
El Circulo Cervantes.



GENTRY, CHARLES *A.B.*



DRAPER, HELEN LOVE  
*B.S. in Education*  
Women's Glee Club (1); D. T. C. Art Club, President (2); D. T. C. Union Council (1, 2, 3), Social Chairman (3).



ELLESIN, DANIEL S. *Mich. L.C.*  
President T. C. Senior Class.



FEINN, DOROTHY *A.B.*



FRIEDMAN, ESTHER *A.B.*  
Sigma Theta Delta, Treasurer (2, 3).



GERSHENSON, SAMUEL N.  
*A.B. in Bus. Administration*



GIBBONS, HELEN CREEGAN *A.B.*  
Editor Detroit Collegian (5); Managing Editor Summer Student (3); Women's Editor Detroit Collegian (3).



GOLDER, HARRY *A.B.*  
Sphinx (1, 2, 3, 4), President (4); Varsity Debating (2, 3, 4); Second Place, College Oratory (4); Pi Kappa Delta (2, 3, 4), Vice-President (3); Inter-Fraternity Council (3, 4), Secretary (4); College Theatre (3, 4); Permanent Chairman Mock Democratic Convention (4); Mackenzie Honor Society.



GOTTESMAN, ELLEN *A.B.*



GORMAN, MARTIN *Ph.C.*



GRACEY, HELEN L.  
*B.S. in Home Economics*  
A. W. S. Cabinet (4); Home Economics Club, Vice-President (4).



GLEW, MARGARET  
*B.S. in Education*  
Union City, Michigan; Clio Club (2), Vice-President, Social Chairman; Home Room Club (2, 3); Alpha Sigma Tau (2, 3, 4); Gamma Eta (3, 4), Secretary-Treasurer (3); Class President (3a); Delegate to Model League of Nations Assembly (2).

GOODMAN, STELLA *A.B.*



GOOZE, LILLIAN  
*A.B.; Mich. L.C.*  
El Circulo Cervantes (1, 2, 3, 4).



GRANT, VIRGINIA LOUISE  
*A.B.; Mich. L.C.*  
Sigma Sigma; Secretary (2); Junior Council (3); Art Guild (2, 3, 4); T. C. Art Club (3, 4); "Irene" Griffin (3, 4), Art Editor (4); W. A. A. (2, 3, 4); Frosh Frolic Committee.



GREENBERG, IRVING *Ph.C.*  
Pharmic Club; Basketball (1, 2); Baseball (1, 2); Apothos Club.





GROSS, L. *A.B.*



GULLEN, ALICE MARGARET *A.B.*  
Sigma Sigma; Class Vice-President (1, 2, 3, 4); A. W. S., Vice-President (4); Senior Ball Committee; Chairman Senior Women's Activities (4); Chairman Senior Reception (4); J-Hop Committee (3); Soph Prom Committee (2); Frosh Flurry Committee (1); Co-chairman A. W. S. Book Exchange (2); Chairman A. W. S. Dutch Carnival (4); Chairman Freshman Commission (1); Chairman Junior Council (3).



GERLACH, RAY *A.B.*



HAMLIN, LAURA E.  
*B.S. in Education*  
Rural Club President (1, 2); Clio Club, Vice-President (2); Student Council, Secretary (3); T. C. Union Representative (2); Hockey (1); Y. W. C. A. (1, 2).



HANNING, RUTH VIRGINIA *A.B.*



GRYCH, STELLA ROSE  
*B.S. in Pharmacy*  
Lambda Kappa Sigma, Recording Secretary (4).

GUSTAFSSON, NORMAN B. *A.B.*  
Gamma Phi Delta; College Players (3, 4); J-Hop Committee (3); "Red Mill" (2); "Irene" (3); "Gold in the Hills" (4).

BRENNAN, BERNICE B. *A.B.*  
Class Secretary (4); Women's State Oratory Champion (3); Varsity Debate (2, 3, 4); Inter-Class Debate (2); Coach Inter-Class Debate (4); Pi Kappa Delta (3, 4), Vice-President (4).

HAMMOND, CRIS M. *A.B.*  
Football (1, 2, 3); Track (2).

HANRAHAN, MARY J. *A.B.*  
Sigma Gamma Pi (1, 2, 3, 4), Treasurer (3, 4).

HARDING, HARRY RUSSELL  
*A.B. in Bus. Administration*  
"High Jinks" (1); Soph-Frosh Games (2); Soph Prom Committee (2); Frosh Frolic Committee (1); J-Hop Committee (3); Senior Ball Committee (4); Chairman Senior Skip Day (4); Inter-Fraternity Council (2); Arab.



HARLTON, WILLIAM F., JR.  
*A.B.*  
Student Club (3, 4); Kick-Off; Student Club Forum, Chairman; Snowfall Barn Dance (4); Senior Class Debate (4); Griffin (4); Senior Party (4); Senior Ball (4); "Gold in the Hills"; Chairman Field Day (4); Freshman Mixer (4).



HEALEY, GEORGE, JR.  
*A.B. in Bus. Administration*



HICOCK, MARY BELLE *A.B.*



JACKSON, HELEN VIRGINIA *A.B.*



HARRINGTON, CHARLOTTE B. *A.B.*  
Band (1); Spanish Club (2, 3); A. W. S. (1, 2, 3, 4); Sigma Gamma Pi (3, 4).

HOLKO, JOHN EUGENE *A.B.*  
Pi Alpha Phi.

HENNING, ESTHER *A.B.*

IZBITSKY, ISADORE *A.B.*

JUNTUNEN, JOHN *Ph.C.*  
Detroit Institute of Technology; Kappa Psi.

KALER, MARGARET

*B.S.; Mich. L.C.*

President Alpha Sigma Tau; Inter-Sorority Council; N. S. F. A. Representative; Poster Chairman; Y. W. C. A.; Art Club; Treasurer Teachers' College Union; President T. C. Union.



KATZ, JOE

*A.B.*

KENNEDY, JEAN R.

*B.S. in Home Economics*

Home Economics Club (1, 2, 3, 4).



KENNEDY, DONALD J. *A.B.*

Kappa Chi (2, 3, 4); Fraternity Basketball (2); Student Club (1, 2); French Club (1, 2); College Theatre; "March Hares" (2); "Children of the Moon" (2); "Irene" (3); Senior Cap and Gown Committee (4).

KETTENHOFEN, MARY

*A.B.*



KEYES, JEAN

*B.S. in Home Economics*

Alpha Theta Sigma; Home Economics Club.

KOEHLER, M.

*A.B.*



KROLL, MORRIS

*Ph.C.*

Apothos (2, 3); Inter-Club Baseball (2, 3); Inter-Club Basketball (2, 3).

KUTZEN, DOROTHY GERTRUDE

*Mich. L.C.*

Sigma Theta Delta; W. A. A. (2, 3), Cabinet (2, 3); Collegian (2); Basketball (1, 2, 3); Tennis (2, 3); Baseball (1, 2, 3); Skating (1, 2, 3); Volleyball (2); President T. C. Soph I Class; Gamma Eta, Social Chairman (2); Home Room Club, Secretary (2).



KIRCHNER, ELIZABETH

*Mich. L.C.*

Kindergarten Club (3).

LAFREY, RAYMOND HARRY *A.B.*  
Spanish Club (1, 2); French Club (2, 3, 4); Fencing (2, 3).



LAIDLAW, L.

*A.B.*

LANGEE, C.

*A.B.*



LANGTRY, ALBERT C.

*B.S.; Mich. L.C.*

Varsity Track (2, 3, 4); Freshman Track (1); Varsity Cross-Country (2, 3, 4); Kappa Chi, Secretary (2), Treasurer (3), Vice-President (4); Fraternity Basketball and Baseball; Chairman Senior Class Athletics.

LEMKE, EUGENIA BARBARA

*B.S.; Ph.C.*

Lambda Kappa Sigma, Vice-President (3), President (4); Class Secretary (4); Student Representative to Detroit Branch of American Pharmaceutical Association.



LIPSON, DORIS

*A.B.*

LOCY, BUNNIE LEE

*A.B.*

Zeta Chi; College Players; Opera (1, 2, 3, 4); El Circulo Cervantes.



LOTIER, STUART

*A.B.*

Kappa Chi (2, 3, 4), Secretary (3); Alpha Tau Beta (2, 3, 4), Secretary-Treasurer (4); Student Council (2); "D" Book Editor (3); Faculty Editor Griffin (2); President Summer Student Council (3); Interfraternity Council (4); Chairman Senior Swing-Out Committee (4).

LOWENBERG, GERMAINE H.

*B.S. in Education*

Battle Creek College.



LAZOWSKI, ELEANOR

*A.B.*

LUBLIN, DOROTHY

*B.S. in Education*

Class Secretary (2); Class Nominating Committee (2); Garden Committee (2); Union Nominating Committee (2); Union Committee (2); Home Room Club (2, 3), Secretary (3); Gamma Eta (3, 4), Historian (3).



LUTZEIER, PAUL GENE *A.B.*

Kappa Chi; Editor The Detroit Collegian; Editor "D" Book; Managing Editor Jabberwock; Managing Editor Panhellenic; Associate Editor, Griffin; Prior of Friars; President Alpha Tau Beta; Vice-President Student Club; The Summer Collegian; Publicity Director College Theatre; College Players, "Dr. Knock"; "Double Demon"; "The Drunkard"; "Gold in the Hills"; Mackenzie Honor Society.



MAGNELL, RALPH *A.B.*



MARSHALL, ERNEST T. *A.B.*

Basketball (1, 3); Health Education Club; Spanish Club; Scrollers' Club; Kappa Alpha Psi; "D" Club.



MARTIN, ALICE ETHEL

*Mich. L.C.*

W. A. A. Cabinet (1); Class President (2); Secretary T. C. Union (2); Representative to N. S. F. A. Convention (2); Vice-President T. C. Union (3); Chairman N. S. F. A. (3); Kindergarten Club, Treasurer (3).



LUSTIGMAN, HERMAN *A.B.*

"Red Mill" (2); "Trene" (3); Men's Glee Club (2, 3, 4); Inter-Class Football (2, 3).

MAIER, ROLAND C.

*B.S. in Chemical Engineering*

Epsilon Sigma (3, 4); Engineering Society (2-4), Vice-President (3), Treasurer (4).

MARLOWE, HORTENSE *A.B.*

Kindergarten Club (3).

MARTELLA, WALTER *Ph.C.*

MASLEN, MARCIA *A.B.*

MANGE, J. W. *A.B.*

MILLMAN, MEYER E.

*B.S.; Ph.C.*

Interclub Baseball (2, 3); Pharmic Club (1, 2, 3).

MILSTEIN, A. FREDA *A.B.*

A. W. S. (2, 3); German Club (4).

MOHAUPT, ROSINA K. *A.B.*

Rho Chi, Secretary; Mathematics Club, Secretary; Collegian; Sigma Gamma Pi.

MOSKOWITZ, BELLA H. *Ph.C.*

Lambda Kappa Sigma, Vice-President.



MEREDITH, GRACE E. *A.B.*

Zeta Chi, Treasurer (4); Les Precieuses (2, 3); Sigma Gamma Pi (2, 3).

MILOWSKY, CHANNIE

*B.S. in Home Economics*

Home Economics Club (1-4).

MITCHELL, RUTH MAY *A.B.*

MOLLNO, ESTHER JOANN

*A.B.; Mich. L.C.*

College Players.

MOUNTEER, EUNICE ESTELLE

*A.B.*

Zeta Chi (1, 2, 3, 4), Corresponding Secretary (2), President (4); Inter-Sorority Council (4); Art Guild, Secretary-Treasurer (4); Les Precieuses (2); French Club (3); Spanish Club (2, 3); A. W. S. Formal Dance Committee (4); Senior Caps and Gowns Committee, Chairman; "High Jinks"; "Red Mill"; "Trene."



MACZEWSKI, JOHN EDMUND  
*B.S.*  
Pi Alpha Phi; Pre-Medical Club;  
Mock Democratic National Con-  
vention (4).



MCARDLE, KATHERINE *A.B.*  
Delta Gamma Chi; Student Council,  
Corresponding Secretary (4); Elec-  
tions Committee (4); College Play-  
ers (2, 3, 4); "High Jinks" (1);  
"Red Mill" (2); "Irene" (3); "The  
Drunkard" (2); "Dr. Knock" (2);  
"Children of the Moon" (2);  
"Wappin Wharf" (3); "The Whole  
Town's Talking" (3); "Gold in the  
Hills" (4).



MARSHALL, ERNEST T. *A.B.*  
Basketball (1, 3); Health Education  
Club; Spanish Club; Scrollers' Club;  
Kappa Alpha Psi; "D" Club.



NAPOLITANO, RITA C. *A.B.*  
Glee Club (1, 2, 3, 4); W. A. A.  
(1); "Red Mill" (2); Spanish Club  
(1, 2, 3, 4); El Circulo Cervantes;  
A. W. S. (1, 2, 3, 4).



NELLES, FLORIAN ELEANOR *A.B.*  
Delta Gamma Chi (2, 3, 4); A. W.  
S. Cabinet (2, 3, 4); Secretary of  
Class (2, 3); Frosh Flurry Commit-  
tee (1); Soph Prom Committee (2);  
J-Hop Committee (3); Senior Ball  
Committee (4); Freshman Commis-  
sion (1); Junior Council, Secretary  
(3); Student Council (3); Chairman  
Senior Banquet (4); "High Jinks";  
"So This Is Politics"; Glee Club  
(1, 2, 3, 4).



MCLEAN, WILLIAM MOORE *A.B.*  
Albion College '28; Houghton "Art  
Craft" Institute '28; Padagogische  
Akademie, Stettin, Germany, '30;  
Collegian (4).

McINTOSH, LILLIAN  
*Mich. L.C.*

MURPHY, ALICE ELIZABETH  
*A.B.*  
President A. W. S. (4); Winner of  
Detroit City Oratorical Contest;  
Winner of State Oratorical Contest  
(4); Secretary Student Council (4);  
Zeta Chi; College Players (3, 4);  
"March Hares" (2); "Children of  
the Moon" (2); "Servant in the  
House" (3); "Goose Hangs High"  
(4); "Irene" (3); Chairman A. W.  
S. Charity Party (3); Chairman  
Mother and Daughter Tea (2);  
Chairman Senior Invitations.

NIEMAN, WILBERT *A.B.*

NELIUS, MARY *A.B.*

NELSON, SADIE RUTH  
*Mich. L.C.*  
Class Secretary (3); Home Room  
Club, President.



NUTTALL, WILLIAM J.  
*B.S. in Mechanical Engineering*  
Epsilon Sigma (3, 4), Treasurer  
(4); Engineering Society (1-4).



O'BRIEN, MARTHA MARY *A.B.*



OPP, BERNICE O.  
*B.S. in Education*  
Collegian (3); College Theatre (3);  
"Irene" (3).



PENNINGTON, VIRGINIA CLYDA  
*A.B.*  
Chairman Junior Girls' Tea (3);  
A. W. S. Formal Committee (3);  
Elections Committee (4).



NOLAN, WINIFRED *A.B.*

NICHOLS, SHERWOOD *A.B.*

OAMKA, RUTH HENRIETTA *A.B.*  
A. W. S. (4); Spanish Club (2).

OULETTE, MARVIN S. *A.B.*  
Basketball (1-4), Captain (4);  
Track (1); Opera (1-3); Glee Club  
(1, 2); Gas House Gang (2-4);  
Alpha Delta Psi (4); "D" Club.

PETERS, MARY *A.B.*

POLLOCK, ESTELLE *A.B.*  
El Circulo Cervantes (2-4); Sigma Theta Delta, Secretary (2), President (4).



POLZIN, ELMER O. *A.B.*  
Pi Phi Omicron (2, 3, 4), President (4); Gas House Gang (3, 4), Watchdog of the Treasury (4); Inter-Fraternity Council (4); Sigma Gamma Pi (2, 3, 4); Proedros (2, 3, 4).



PURINTON, AGNES IDELLA *A.B.*  
Spanish Club (1, 2, 3); Oratory (3).



POLITZER, BERTHA *A.B.*



PIPER, HELEN *A.B.*



RAPP, CHARLES, JR.  
*A.B. in Bus. Administration*  
Arab; Assistant Business Manager Griffin (2).



RINGE, HARVEY ARTHUR  
*B.S. in Mechanical Engineering*  
Epsilon Sigma (2, 3, 4), Treasurer (3), Vice-President (4); Engineering Society (3, 4).



RENTER, FRED *A.B.*



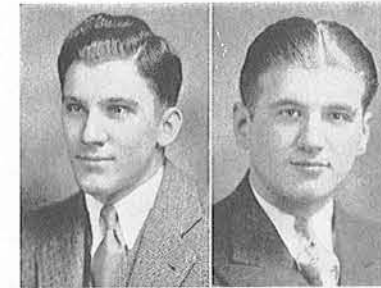
RICHARDS, E. BUNTS *A.B.*



RESKE, ALVEN A. *A.B.*  
Gamma Phi Delta; Pi Sigma Alpha, President (3, 4); Michigan Inter-Collegiate Model League Assembly (3, 4), Acting President (4).



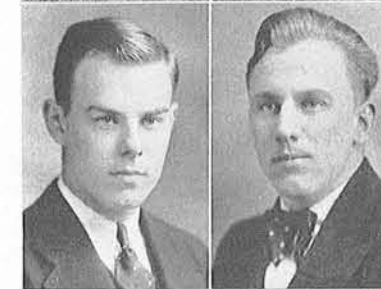
ROSENAU, ARTHUR WILSHER *A.B.*  
Football (1, 2, 3, 4); Basketball (1); Track (1, 2, 3, 4); Sigma Delta Psi.



ROUNDS, GLORIA V.  
*A.B.; Mich. L.C.*  
Women's Debate Squad (3, 4); Women's Oratory (4); Student Assistant in Speech Science (4).



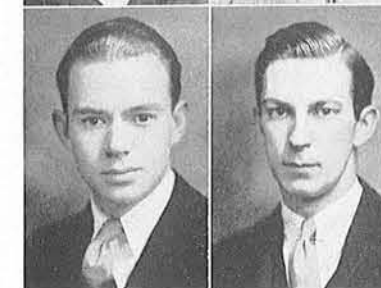
RUSSELL, LAWRENCE  
*B.S. in Mechanical Engineering*  
Football (1, 2, 3, 4), Captain (1); Basketball (1); Gas House Gang (1, 2, 3, 4), Premier (2), King (1); Friars.



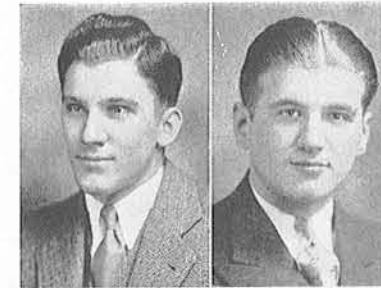
SCHREADER, BERNICE *A.B.*



SCHWARTZ, GEORGE MARCUS  
*Ph.C.*  
Shah, Vice-President; Pharmacy Student Council (4).



ROTHENBERG, JEROME A. *A.B.*  
Freshman Football (1); Class Treasurer (1, 2, 3, 4); Varsity Debating (2, 3); Frosh Frolic Committee (1); Soph Prom Committee (2); J-Hop Committee (3); Senior Ball Committee (4); Pi Tau Sigma (1, 2, 3, 4), Treasurer (2), President (3); Pi Kappa Delta.



RUBIN, SAM  
Phi Alpha (2, 3, 4); Vice-president (3), President (4); Organizations Editor Griffin (2); Inter-fraternity Council (3, 4); Inter-fraternity Athletics (2, 3).



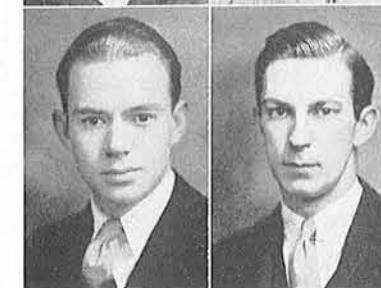
SACHOCKI, JOHN B. *Ph.C.*



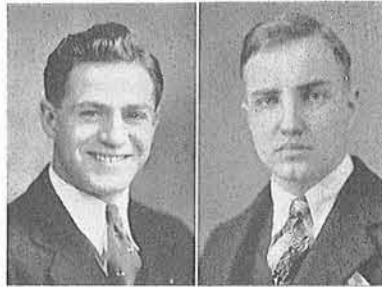
SCHULTZ, WILLIAM C., JR.  
*A.B. in Bus. Administration*  
Alpha Delta Psi, Treasurer (2, 3), President (4); Inter-Fraternity Council (4); Gas House Gang (1, 2, 3, 4); Inter-Fraternity Basketball (2, 3, 4); Inter-Fraternity Baseball (3, 4); Student Council (4); Griffin (4); Royal Ball Orchestra Chairman (4).



SCHWEIZER, MAYBURY *A.B.*



SELTZER, SOL N. *B.S.*  
Football (1, 2, 3, 4); Student Club (1, 2, 3, 4), Cabinet (1, 2), Secretary-Treasurer (3, 4); Glee Club (2, 3, 4); Campus Club (1, 2, 3), Treasurer (2), Vice-President (3); Pen and Gavel, Treasurer (1, 2); "Red Mill" (2); "Irene" (3); "Creation" (3); "Requiem" (4); Collegian (2); Model League of Nations Assembly (4); "Gold in the Hills" (4); Freshman Mixer (1, 2, 3, 4); Class Basketball (2, 3); Class Track (2, 3); Captain Club Championship Baseball Team (2); "D" Club (2, 3, 4).



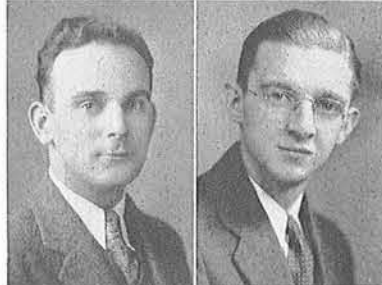
SHERMAN, LESTER CONRAD *A.B.*  
Pi Alpha Phi; Pen and Gavel, Secretary (1, 2); French Club (1, 2, 3); German Club (4); Collegian (2, 3, 4), News Editor (3), Managing Editor (4); "D" Book, Associate Editor (3); Inter-Class Debating (2); College Theatre Play Contest (3); Student Disarmament Committee (4); Learn-to-Dance Club, Publicity Committee (4); Model Democratic Convention (4); Model League of Nations (4).

SHUKAIT, JOHN *Ph.C.*



SKIFFINGTON, JUNE *A.B.*

SLOAN, B. EARL *A.B.*  
Gas House Gang (1, 2, 3, 4); Alpha Delta Psi, Vice-President (3, 4); Royal Ball, Chairman (4); J-Hop, Chairman Orchestra Committee (3); Senior Class, Social Chairman (4); Mock Democratic Convention (4); Griffin (4).



SALOT, NEVIN E. *A.B.*  
Kappa Chi; Glee Club (3).

STARK, KATHERINE JANE  
Vice-President Pi Kappa Sigma (2); Class Social Chairman (1); Vice-President (2); Treasurer Kindergarten Club (2); President Teachers' College Union (2).



STRAESSER, WALTER EDWARD *A.B.*  
Physics Laboratory Assistant (3, 4).

STUTSMAN, SWANZEY ALBERTA *A.B.*  
French Club, Vice-President (2); Art Guild, Secretary (3), President (4); "D" Book (4); A. W. S. Committee (3, 4).



SWANEY, COLLETTA M. *A.B.*

SWICKLE, EDWARD FRANCIS *Ph.C.*

Senior Smoker, Entertainment Committee (3); Phi Delta Chi (3); Director Pharmacy Orchestra (2, 3); Chairman Entertainment Committee (3); Pharmacy Annual Dance (4).



SHERMAN, LEON *A.B.*

THOMAS, LUCILLE *A.B.*



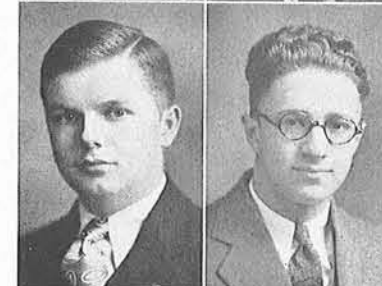
TELFER, JAMES *A.B.*  
Gas House Gang (3, 4), Royal Bouncer (4); Varsity Basketball (3, 4).

TERRACE, IDA *A.B.*



THOMAS, ALBERT R. *A.B.*  
Kappa Chi; Fraternity Track (1, 2); Fraternity Basketball (1, 2, 3, 4, 5); Fraternity Baseball (1, 2, 3, 4, 5); Varsity Football (1, 2, 3, 5); Varsity Basketball (1, 2, 4, 5); Chairman "Book a Month Club" of Geology and Geography Department (4, 5).

THOMAS, GEORGE REBER *B.S.*  
Varsity Cheerleader (1, 2); Griffin, Feature Editor (1); Engineering Society (2, 3, 4); Gas House Gang (4); Student Club (4); "High Jinks" (1).



TICKTON, SIDNEY G. *A.B.*  
Pi Tau Sigma (2), Secretary (3), Treasurer (4); Collegian (2), News Editor (3), Associate Managing Editor (3); Orchestra (1).

TORONGO, HAZEL LILA *A.B.*



VENABLE, WILLIAM WADE *Ph.C.*  
Sphinx.



VOGTLIN, MILDRED E.  
A.B.; Mich. L.C.  
Cercle Français (3, 4).



VORIES, JACK Ph.C.



VULETICH, RADMILA A.B.



WALKER, VIRGINIA A.B.



WEBER, MARIE A.B.



WHITE, MIRIAM A.B.



WHYARD, RUTH ELIZABETH  
Ph.C.  
Pharmacy Student Council, Secretary; Collegian (2); Lambda Kappa Sigma, Secretary (2), Treasurer (3).



WIBBY, HELEN JENIPHER JOAN  
A.B.  
Alpha Theta Sigma.



WILCOX, GORDON W.  
B.S. in Chemical Engineering  
Epsilon Sigma (2, 3, 4), Secretary (4); Engineering Society (2, 3, 4); Sigma Rho Tau (4).



WILLER, MORRIS A.B.



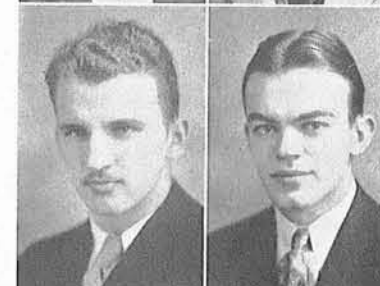
WILSON, LAURABEL A.B.  
President Y. W. C. A. (4); Social Chairman A. W. S. (4); Chairman A. W. S. Formal (4); Social Chairman Y. W. C. A. (3); A. W. S. Cabinet (3, 4); Junior Commission (3).



WILSON, JOHN ELMER B.S.  
Freshman Football (1); Varsity Football (2, 3); Glee Club (2, 3, 4); "Red Mill" (2); "Irene" (3); Freshman Mixer (4); Kickoff Committee (4); Snow-Fall Barn Dance (4); Senior Dance (4); Senior Class Debating (4); Student Club (3, 4); "Gold in the Hills"; Field Committee (4).



WISNIEWSKI, CLARENCE A.  
Ph.C.  
Phi Delta Chi; Football; Pharmacy Student Council.



WOLFE, CHARLES JORDAN A.B.  
Arab, Secretary (2); President (3); "High Jinks" (1); "Red Mill," Publicity Chairman (2); Soph Prom (2); Frosh Football (1); Inter-Fraternity Council (2, 3); Glee Club (1, 2).



ZACARIAN, HENRY Ph.C.  
Graduate, College Guarabedian of Stambul (Constantinople); International Students' Club, Vice-President; President Armenian Collegians of Michigan.



ZAIKOWSKA, HALINA A.B.



ZUKOWSKI, S. A. A.B.



BLOOM, HENRY S. A.B.  
Orchestra (1, 2); College Theatre (3).



BURROUGHS, ROSWELL A.B.



Seniors Without Photos

Alex Burnstein  
Lawrence Davis  
Sam Farber  
Morton Miller  
Nellie Smalarz (Aug.)  
Leo Turner  
Morris Averbuch  
(Aug.)  
Helen Linsky  
Harold Maxmen  
Myer Millman  
Samuel Nelson  
Israel Poliat  
Dorothy Marie Adams  
Clarence F. Alban  
Betty Alice Altman  
Jess Altman  
Richard Aldrich  
Blixberg  
Henry S. Bloom  
Ben Borin  
Bernice B. Brennan  
Robert H. Briggs  
Edward Joseph Cabot  
Alice Carroll  
Helen Murray  
Cartwright  
Oscar A. Colten  
Theodore Czerkowski  
William Thomas  
Darling  
Philip Cameron Davis  
Sidney Lawrence  
Einzig  
Samuel C. Epstein  
George Sparling Fead  
Verna Jonina Finsson  
Kathleen FitzGerald  
Bell G. Fletcher  
F. E. Foster  
Ebba Fursland  
Harry Greenberg  
Jack R. Greenberg  
Morris A. Greenberg  
Mary Genevieve  
Guinness  
Gerda Frost Hansen  
James M. Hare, Jr.  
Allen Richard  
Hartingh  
Arthur Paul  
Holmberg  
Caroline Humeston  
John M. Irwin  
Isidore Jackel  
Esme Margaret  
Jesson  
Edmund Kabala  
Eleanor Grace Kindred  
Marion Frances  
Koscinski  
Irving Jessor Kurtz  
Elmer G. Lambrecht  
Edith Langer  
John W. Libeke  
John Adam Lind  
Helen Linsky  
Lucille C. Lundgren  
Robert O. McLean  
Mary Sara Macdonald  
Alexander Martinli  
Paul Gene Lutzzeier  
Mary Nykirchuk  
Percy Arthur  
Maslowsky  
John S. Matthews  
Harold A. Maxman  
Mortun Miller  
Wanda Misiurkiewicz  
Phyllis E. Moore

Mabel Ann Morris  
Bella H. Moskowitz  
Edward S. Navickas  
Samuel Nelson  
Amelia Nicholas  
John L. Nuelson, Jr.  
Germaine S. Pajas  
Clyde Peters  
Ray Poliat  
Ann J. Rambar  
Abraham S. Rapoport  
Clara S. Rapoport  
Florence Ann Renny  
Betty Richards  
Elizabeth F. Roach  
Samuel Charles Robins  
Stanley John Roman  
John Franklin Romer  
Grace L. Ross  
Lillian Rybczynski  
Manuel Salinger  
Levi Z. Saunders  
Gerald T. Shulte  
Freda Helen Albrecht  
Joseph Rubenstein  
Samuel Serwer  
Florence M. Sheppard  
Dorothy E. Simons  
Anastasia A. Skar  
Gregory Albert  
Skully  
Rowena Stoner Smith  
Lo Stawecki  
Maxwell N. Steffens  
Albert Harold Stein  
Marguerite Stephens  
Harold William Stubbs  
Emily Alverna Taisey  
Ruth Tietkin  
Leo Turner  
Caroline Mary  
VanLoon  
Paul J. Waltz  
William L.  
Weatherhead  
Sophie Weinstein  
Wanda Cecilia Werner  
Dorothy E. Wicke  
Geraldine E. Weiman  
Robert Franklin  
Alderman  
Louis Bronstein  
Harold W. Buchner  
Herman M. Chesluk  
Alex Semour  
Friedlaender  
Louis Z. Gordon  
Irwin M. Greenberg  
Morris Greenberg  
Loris McGinnis  
Hotchkiss  
Byron Simmons Knapp  
Harry Robert Lipton  
Harry M. Menton  
Joseph G. Molner  
Barney Nosanchuk  
Thomas L. Poindexter  
Winlaw A. Priebe  
William R. Rekshan  
Harold Camden Shafer  
Morris B. Sofen  
Carlos C. Speck  
Maurice Spector  
Fred L. Strickroot  
Nathan Uranofsky  
Howard A. Weleh  
Andrew Kennard  
Payne  
Leonard Barbas  
Theodore M. Dorsz

Claris Fineman  
Melvin E. Fowler  
Laura Ratcliffe  
Johnston  
Herman Kazdan  
John J. Lovchuck  
Douglas McGregor  
Thomas George  
Mandelaris  
Douglas E. Maples  
Rosalind Merliss  
Evelyn Virginia Remer  
Bert E. Rynearson  
Elsie B. Soltar  
C. S. Taylor  
Anna Terhardt  
John B. Thomson  
Harold Ginsberg  
Bess L. Abbott  
Lulu Gregory Adams  
Minerva Tubbs Adams  
Clara Harriet Adolph  
Mary Dolena Ahearn  
Freda Helen Albrecht  
Beatrice Aldhous  
Verna B. Allen  
John Henri Amos  
Melencis R. Andrews  
Martha E. Bacon  
Ruth N. Bacon  
Katherine M. Banning  
Jennie Belle Begole  
Mildred Marie Beier  
Bessie Bever  
Lucille Knapp Billett  
John E. Blair  
May Brow  
Bodenweiser  
Albert Rowland  
Botten  
Lucy Margaret  
Boulton  
Bernita M. Bower  
Sister Mary of Saint  
Amelia, Bridgeman  
Fred Broomfield  
Rachel A. Brown  
Mildred Bruesser  
Gertrude Freeman  
Bugbee  
Edna M. Burns  
Henry E. Bussiere  
Medora Elaine Buxton  
Anna M. Cable  
Charlotte Campbell  
Alice A. Cargill  
Margaret Lutz Carless  
Sister Mary Adolphus  
(Caron)  
Lucy A. Carpenter  
Patrick Carrigan  
Marion Adelia Casady  
Lorraine B. Charlton  
Elizabeth Baldwin  
Christie  
Laura Hamilton  
Chynoweth  
Alice Knack Clark  
Florence Cobel  
Reta B. Codling  
Esther Cohen  
Mary Cohen  
Anna Collins  
Clara Willens Conrad  
Hazen M. Coon  
Esther Eloise Cowley  
Clifford L. Cox  
Rita Loretta Cox  
Sister Mary Claudia  
(Crawmer)

Sarah Ann Crisman  
Edith S. Cunningham  
Rhea V. Dalrymple  
Kathleen I. Daly  
Helen Davidson  
Irene C. Davis  
Ethel Davison  
Jason K. Day  
Wallace Gordon  
Deacon  
Josephine Frances  
Dealy  
Lillian Demske  
Joseph Frederick Dery  
Sophia E. Dobelek  
Eva M. Doyle  
Lucie Marie Dumon  
Ella Wynn Beard  
Easterday  
Sophie M. Eckman  
Charles N. Egbert  
Celia Erman  
Addie Blanche Evans  
Lillian Lea Farbman  
Eleanor Carter Fay  
Adele Louise Feaheny  
Bertha Marie Findlay  
Lillian M. Firth  
Neva Vera Fisher  
Gertrude Fitzpatrick  
Mary V. Fitzpatrick  
Gertrude Fleming  
Florence Fern  
Fletcher  
Evelyn Fox  
Helen Louise Freitag  
Eldon Pratt Fuller  
Catherine C. Gagan  
Nellis V. Galbreath  
Helen Mary Goe  
Minnie Louise  
Galezke  
Margaret Glow  
Martha Barrie Gowans  
Imogene E. Grant  
Josephine Collins  
Greiner  
Dorothea Grix  
Jennie Gustafson  
Elsie M. Gwinn  
Lillian M. Gwinn  
Laura E. Hamlin  
Frances Scott Hardie  
Nelly Edith Harper  
Mrs. Blanche Harwood  
Myrtle Irene Haynes  
Ella Mary Haywood  
Floyd J. Hellum  
Catherine Henzie  
Nell Gordon Herndon  
Dorothea A. Herrmann  
Florence E. Hiatt  
Irene Webster Hill  
Helen Barbara Hirt  
Grace Sophia Hoag  
Olive Hocking  
Arabella Johanna  
Hoffman  
Cornelia A. Hoffman  
Bessie Stacy Holtz  
Mary Anna Hopkins  
Cathryn T. Horgan  
Mary V. Horgan  
S. N. Horton  
Charlotte Hudgins  
Mabel Hunt  
Delia Patricia Hussey  
Mabel Clare Rust  
Samuel Jacobs

Ethel Jacobson  
Grace Hannah James  
Hattie E. James  
C. Fred Jeffers  
Elsie Joanna Jennings  
Ervin Odin Johnson  
Harry G. Johnson  
Howard Lincoln  
Johnson  
Margaret Muldoon  
Johnston  
Kathryn Joy  
Florence E. Kane  
Mary Elizabeth Kary  
Helen Margaret  
Keliber  
Lucille A. Kerber  
Sophia Theel Kerwin  
Margaret Kessler  
Harry E. Kinney  
Helen V. Kirby  
George W. Knapp  
Helen Knight  
Ruth Squire Knight  
John Emanuel Koski  
Carolyn Rice Krall  
Bertha Marie Krogh  
Rosaline Lauretta  
Kruger  
Della Mottetal Kuster  
Mary Alice Lang  
Georgina Young  
Lannin  
M. Reva Larson  
Inez Kinzie Lassig  
Margaret Eulalia  
Leary  
Myrtle L. Lehman  
Doris E. Lenz  
Alice Marie Leteaker  
Rohma-Gertrude  
Leverson  
William Levitan  
Bolette K. Jansen  
Lisberg  
Elizabeth Ann  
Lockwood  
Hertha Mosnck Loze  
M. Marion Macdonald  
Mary Ann MacLennan  
John S. Malley  
Elizabeth Starrs  
Malone  
Hazel M. Marlin  
Helen L. Marshall  
Fayette H. Martens  
Irma Louise Martens  
Minnie Martini  
Maria Gladys Mayer  
Roland Jack Mayrand  
Earl J. Mayrend  
Marion A. McAlpine  
Clara McCrary  
Kate McDonald  
Mae E. McGuinness  
Clara Shippy  
McIlvenna  
Elizabeth McLarney  
Marjorie Kathleen  
McLean  
C. Ruth McMillan  
Josephine McNamara  
Josephine M.  
McNamara  
Anna McNerney  
Frances Ann McRae  
Joy M. Meier  
Alice Mellen  
Ina B. Melson  
Hazel Deane Menzies

Seniors Without Photos

Mabel May Miller  
Jennie Lucille  
Mitchell  
Ruth E. Moffat  
Celia H. Mollohan  
Agatha Monaghan  
Ceola Montross  
Adelaine Lene Moore  
Ethel V. Mott  
Ana L. Mulcahey  
John Mason Mulica  
Florence Margaret  
Mungavin  
Agnes Philomena  
Murphy  
Agnes T. Murray  
Pearl Murray  
Sadie D. Netzorg  
Amber Cooley  
Neumann  
Nettie Newinton  
Blanche May Slack-  
Newton  
Martha Beulah Noble  
L. Florence Nonen  
Louise L. Nowack  
Ernest W. Nybeck  
Chloe Sharritt O'Brien  
Constance Marie  
O'Donnell  
Anna Ulrica Oleson  
Laila B. Olin  
Jean Oliver  
Jean Weaver Opie  
Cecelia Pack  
Ada Clara Packer  
Lydia A. Pagel  
Charlotte Mackey  
Palmer  
Cleantia L. Parke  
Isabelle Parker  
Alice Marie Paulus  
Ella Mae Peatling  
Marjorie Louise  
Penney  
Grace Rebecca Pierce  
E. Vivian Powell  
Lillian Prottengeier  
Anna May Pulver  
Mahalia Charlotte  
Quickstad  
Herbert C. Radabaugh  
Sydney S. Radlow  
Virginia E. Ramsey  
Michael Reid  
Marie Hoffman Renton  
Myrtle Alexander  
Reynolds  
Bertha Nell Rictzkat  
A. Mildred Rings  
Florence DeHart  
Robertson  
Elsie Marie Roethke  
Lucille Rosenthaler  
Almina Ross  
Jesse Myrtle Rowlader  
Carmetta M. Royan  
Olive Ruddock  
Lillian W. Ruddock  
Charlotte B. Rusk  
Adele W. M. Rutten  
Arnold K. Samuelson  
Sarah Lauretta M.  
Sass  
Dorothy Fitch  
Schlaepfer

Edith M. Schilawske  
Clara Helm Schumann  
Loren Perry Scollay  
Nan M. Shaw  
Abbie Louise Shatton  
Loretta Mary Shields  
Mary Thelma Shinover  
Edna Gladys Shorland  
Willifred S. Simpson  
Jessie Sirota  
Jennie Slack  
Bernice Marion  
Sledziefska  
Edith Smith  
Mabel Lange Smith  
Rowena Margaret  
Smith  
Anna G. Sowden  
Olivette L. Spencer  
Jasper W. Stallard  
Vera Doherty  
Stanhope  
Nina H. Stebbins  
Lela M. Steele  
Clara Beatrice  
Stoddard  
Edmond H. Stoelting  
Blanche Stolinski  
Grace M. Stowe  
C. E. Strand  
Dorothy Alison  
Stretch  
Herbert D. Sullivan  
Jean J. Sutherland  
Rosamond S. Swick  
Myglettus P. Taylor  
Lillian Marie Therrien  
Delia Adeline Thew  
Lillian L. Tilley  
Louise Timmins  
Agnes Phillips Totte  
Mary Caroline Tozer  
Lorans A. Tremper  
Beatrice Trombley  
Lillian M. Tucker  
Marion Esther Tyler  
Marjory Helen Unger  
Rena May Van Fleet  
Catherine Diem  
VanHove  
Jane Vincent  
Maurine Lott Waldrup  
Ruth M. Walker  
Eleanor Margaret  
Welsh  
Mildred Haviland  
Wardell  
Mrs. Lexie Lester  
Watson  
Nellie Alma Waugh  
Kathryn Taylor  
Weatherwax  
Edith Welch  
Brigetta E. Wenzel  
Norma Margaret  
Wiesner  
Thelma Amanda  
William  
Florence A. Wilson  
Harley G. Wilson  
Laura G. Wise  
Jane H. Witherell  
Ernst Wuesthoff, Jr.  
Helen May Wyman  
Ruth Lenore Young

Rose Margaret Zebrak  
Marie A. Immordino  
Adamo  
Charles Adams  
Martha S. Aust  
Eleanor Barry  
Jean Gilmore Bayne  
Effie Marian Boughton  
Hortense Margaret  
Bruer  
Sister Catherine  
Marie Cadieux  
Eldora Phelps Clark  
Dorothy G. Coll  
Rosemarie Agnes  
Dacey  
Sara Estelle Frazer  
Ida H. Friedemann  
Ella Victoria  
Furman  
Dorothy Meyer  
Gougeon  
Kathryn M. Hoefel-  
meyer  
Elizabeth Kiehn  
Harriette Knapp  
Clara Elizabeth Knuth  
Marie Kathryn Kurtz  
Mary Ethel MacNeill  
Arthur J. Manske  
Queen McCulloch  
Margaret McNamara  
Mrs. Ann Ruth Meade  
Golda Meyers  
Erma Inez Morris  
Isabel Charlotte  
Muck  
Rose Elaine Mulcahy  
Blanche Mumford  
Adele Marie Rittinger  
Thelma Castor Russell  
Frieda Shevitz  
Katherine Jane Stark  
Owen F. Stemmelen  
Mary Helena White  
Helen Radlow Zaft  
Gertrude Baker  
Steve K. Bartel  
Veronica M. Baum-  
gartner  
Florence Alvena  
Bayne  
Clarence E. Bell  
Otto J. Beyers  
James J. Bogan  
Albert Rowland  
Botton  
Marion Boyd  
Bernice Brennan  
Fred Broomfield  
H. Parker Brown  
Gertrude Bugbee  
Bessie Bunin  
Joe R. Burch  
Helen Murray Cart-  
wright  
Virginia May Chorley  
James M. Collins  
Robert John Dale  
Margaret E. Darnell  
Josephine F. Dealy  
Irene Delaney  
Lydia Enos De Mello  
Joseph Dery  
Marion Beatrice De  
War

Robert Diem  
Elva Dittman  
Margaret Doig  
Mrs. Vera Donigan  
Marguerite I. Duoq  
Norman C. Edelman  
Eleanor L. Elie  
Madeline M. Fair  
Walter Farber  
Marion Ferency  
Verna J. Finnson  
Anne Fisher  
Katherine Elizabeth  
Fitzpatrick  
F. E. Foster  
Clara Estelle Fowler  
Esther Friedman  
Catharine Gagan  
Sylvia M. Golin  
Florence Gertrude  
Goodwin  
Kathleen Goudy  
Frederick William  
Graupner  
May Grunness  
Leo M. Gurko  
Melissa Hall  
Grace Holmes Hamel  
Gerda Frost Hansen  
Margaret A. Harrigan  
Beatrice L. Harrison  
Lillian M. Hart  
Marie Elms Heath  
Genevieve Hedke  
Elsie Naomi Henkel  
Boyce Hellum  
Anna R. Henn  
Z. Ruth Hershaman  
Elizabeth Hobbins  
Mamie Hoffenberg  
Mildred A. Holt  
Harold Edward Jinks  
Arthur Johnson  
Jessie Elizabeth  
Johnston  
Frances P. Juif  
Mary E. Kaake  
Ann Kanter  
Ben Kazyak  
Helen M. Kelley  
Elizabeth Kiehn  
Eleanor Grace Kin-  
dred  
Lewis E. King  
Fred F. Klein  
Ruth Klein  
Pauline Ullaich  
Daniel Klepac  
Bertha Bright Knapp  
Grace Knerr  
Elfried W. Kroll  
Rosaline Kruger  
Gertrude Kruszowska  
William Lakin  
Inez Lassig  
Mary Griffin Latham  
Sarah Lifshitz  
Elizabeth Joy Lincoln  
Marguerite C. Link  
Robert Lockton  
Anna J. Maher  
William M. Main  
John S. Malley  
Arthur J. Manske  
Nellie M. McGuire  
Artie Margie McIn-  
tosh

Ben Meckler  
Florence Mikofsky  
Esther Joann Molino  
Martin Oliver Monhan  
Helen Marie Monroe  
Marion Ruth Moore  
Glennola E. Murphy  
Krama Netzorg  
James M. Oleniak  
Charlotte Palmer  
Catherine Lucille Ols  
Florence Helen Peirce  
Marjorie Louise  
Penney  
Clyde Peters  
Bertha Politzer  
Ann J. Rambar  
Virginia E. Ramsey  
Keith W. Reed  
Anna Loretta Robb  
Thelma Moore Rose  
John Romer  
Leah D. Rosenthal  
Milton J. Ross  
Florence Rothfuss  
Margaret Schlack  
Dorothy Schlaepfar  
Kathryn Schneider  
Roland Karl Schul-  
holz  
Dorothy Selik  
Ida Dorothea Shneider-  
man  
Frieda Shevitz  
Herzl B. Shur  
Mary Silver  
Margaret Elizabeth  
Singleton  
Clifford H. Smart  
Emmy Lou Smith  
Rowena Stoner Smith  
Arthur W. Spring  
William G. Stephens  
C. E. Strand  
Lillian J. Stevens  
Emily Taisey  
Marjorie Beatrice  
Taylor  
Mabel Curtis Teague  
Ida Terris  
Martha M. Thierry  
Grace Catherine  
Thomas  
Lucille E. Thomas  
John S. Tyler  
Ruth Klein  
Pauline Ullaich  
Rose Varkle  
Caroline Van Loon  
Ernest A. Venk  
Beyrl Edward Walrod  
Sophie Weinstein  
Wanda Cecilia  
Werner  
Naomi Ruth Werrell  
Geraldine E. Wieman  
Norma Wiesner  
Dorothy Wicke  
Idalean Irene Wil-  
liams  
Genevieve Woughter  
Ernst Wuesthoff, Jr.  
Grace Jeannette  
Wyllie  
Edward John Zawaski



Junior Class History



Clarence Mumma      Alice Baldwin      Jean Hughes      Howard Hess

Officers

- Clarence Mumma .....*President*
- Alice Baldwin .....*Vice-President*
- Jean Hughes .....*Secretary*
- Howard Hess .....*Treasurer*

UNDER the leadership of the following officers, President, Clarence Mumma; Vice-President, Alice Baldwin; Secretary, Jean Hughes; Treasurer, Howard Hess, and Student Council Representatives, Mary Barrett, William Blakeney and David Eric Wilson, the Junior Class of this year has undertaken an active extra-curricular program. It has had, as its primary interest, the arousal of class spirit among its members and, with this in mind, the Junior Women's and Junior Men's Councils were organized to form a nucleus from which the spirit of initiative and coöperation could emanate.

The efforts of the Junior Women during the first semester were focused on the successful production of "Tsk! Tsk! Toni", an original Musical Comedy, presented November 20 and 21, in the Institute of Arts Auditorium. In the second semester the Women's Council sponsored the traditional Junior Tea in honor of Senior Women; this was held at the Women's Federation Building, April 28.

The Men's Council concentrated on financing the erection of a large, modern score board at Kelsey Athletic Field.

Turning to school activities, the class united in accepting the responsibility for the production of the 1932 Griffin, under the management of James P. Dunnigan.

In a social way also the class of '33 has enlarged its program. Dances were sponsored by both the Women's and Men's Councils. Climaxing the social year was the J-Hop, held in the Crystal Ballroom of the Masonic Temple, February 12. Charles Merckel was chairman of the committee, with Florence Bagnall, Gertrude Ollikkala, Louis Esterling, Edward Sauble, Allen Davidson and David Eric Wilson assisting him.

Realizing the benefits derived from class as well as school activities, the Junior Class earnestly hopes that future classes may carry on the enterprises which it has sought to promote.

Teachers' College Juniors



Betty Geller      Dorothy Coulter      Alice Singer      Bernice Schraeder

Officers

- Betty Geller .....*President*
- Dorothy Coulter .....*Vice-President*
- Alice Singer .....*Secretary*
- Bernice Schraeder .....*Treasurer*

Officers

- Florence Bagnall .....*President*
- Corrine Carey .....*Vice-President*
- Olive Rockey .....*Secretary*
- Helena Haw .....*Treasurer*



Florence Bagnall      Corinne Carey      Olive Rockey      Helena Haw



### Sophomore Class History



William Rieman      Dorothy Irwin      Margaret Love      Frederick Piggins

#### Officers

- William Rieman ..... *President*
- Dorothy Irwin ..... *Vice-President*
- Margaret Mary Love ..... *Secretary*
- Frederick Piggins ..... *Treasurer*

WILLIAM RIEMAN, president, assisted by Dorothy Irwin, vice-president, Margaret Mary Love, secretary, and Fred Piggins, treasurer, directed the Sophomore Class through a splendid year. Julian Tobias and Clifford Wolfe were Student Council representatives.

The active class policy established during the Freshman year was continued. Early in October was "Soph Week," during which all members of the class were identified by tags, yellow with black '34's. In spite of the remarkable class spirit and the strength displayed while harassing the Frosh during the first weeks of the term, the Sophomores lost the Class Games.

An enthusiastic crowd attended the Soph Barn Dance, held in Hardesty's barn, Friday, November 13. The annual Soph Prom was given November 25, at the Masonic Temple, with Bert Stock's orchestra playing. Harry Lange, general chairman, was assisted by a large committee.

The Sophomore Cabinet, a group of twenty women, was a vital factor in promoting a friendly and social class spirit. To the cabinet dance in December, Sophomore women and their guests were invited. The climaxing activity of the group came March 19, when three hundred attended the popular Soph Leap Year Dance, sponsored by the Cabinet.

In forensic affairs, also, the class of '34 excelled. It is proud to claim David Goldman, champion orator, as one of its number. The Sophomore team, composed of Stanley Burns and Julian Tobias, was runner-up in the inter-class debate series.

Many sopohomores were prominent in athletics, both varsity and intramural. The second year men took third place in inter-class basketball and track.

The class hopes to continue to display the fine spirit and enthusiasm so evident this year.

### Freshman Class



Pierce      Donald      Armstrong      Share

#### Class Officers

- Vaughn Pierce ..... *President*
- Daisy Donald ..... *Vice-President*
- Russell Armstrong ..... *Secretary*
- Nathaniel Share ..... *Treasurer*

#### Class History

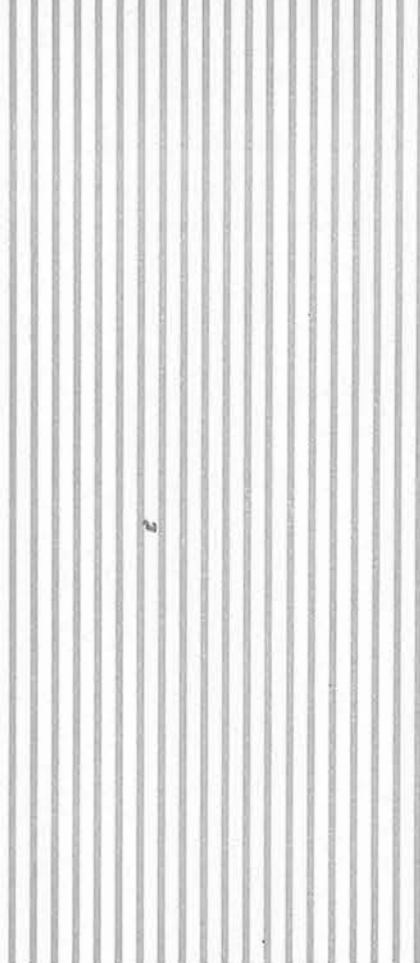
CHOOSING as leaders Vaughn Pierce, president; Daisy Donald, vice-president; Russell, Armstrong, secretary; Nathaniel Share, treasurer, and Edward Downs, Student Council representative, the class of '35 began an intensive program. The Freshman Commission, with Daisy Donald as president and Jean Crawford as secretary, was immediately organized to cooperate with the A. W. S. The other members of the commission were Eleanor Anderson, Lois Bricker, Lillian Cassie, Winifred Comport, Irene Duncan, Mabel Edstrom, Henrietta Fairchild, Patricia Graham, Esther Henks, Violet Hill, Helen Lefton, Esther Lowenberg, Helen Mayhew, Norma Nash, Mary Dyer Purdy, Adeline Sax, Winifred Smith, and Dorothy Tryon.

The Freshmen proved their ability by defeating the Sophomores in the Class Games at Belle Isle. This led to a series of victories in the various fields of endeavor. The class was unusually well represented in the fields of debating, scholarship, athletics, and organizations. The Frosh debaters, Edward Downes and Milton Rabinowitz, were successful in winning the inter-class cup.

The Frosh Flurry, under the leadership of Harvey Berkey, was given at the Masonic Temple, April 15, with Russ Morgan and his orchestra playing.



ORGANIZATIONS

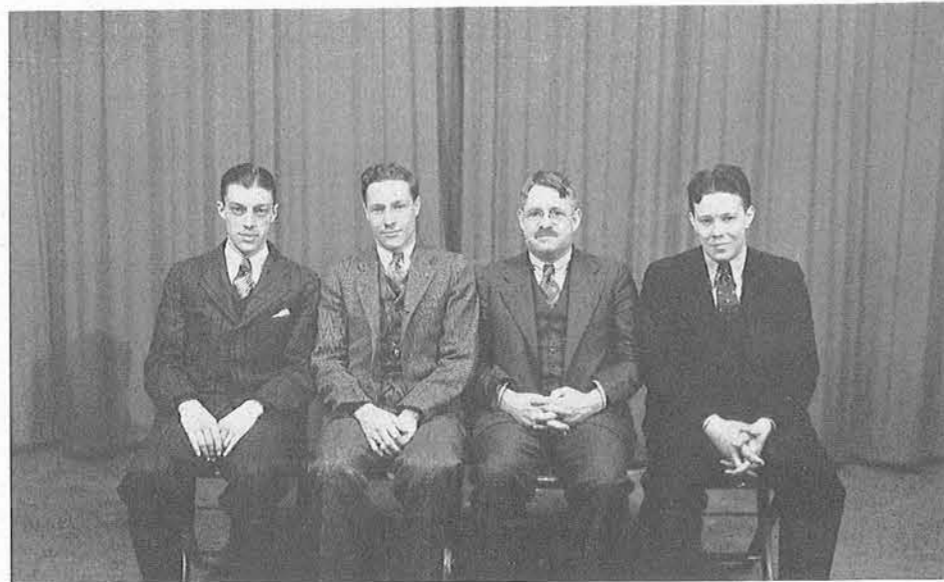


## The Mackenzie Union

### Board of Directors

David Beauvais.....*Student President*  
Hugh Maloney.....*Student Vice-President*  
Ernest Drake .....*Treasurer*  
Leonard Harding.....*Secretary*  
James Dunnigan, Thomas Irwin, Frank Annette,  
Russell Lightbody, Joseph Selden (Dean of Students),  
Charles Mackenzie (Life Member), A. Douglas Jamieson,  
President of the Board of Education

THE MEN OF the College of the City of Detroit have long felt the need for the common ground of meeting of college men, the Union. Funds for the purpose of erecting a Union building had been bequeathed to the College by the late David Mackenzie, first dean of the College, but it was not until 1931 that conditions were considered favorable to make further plans. In that year a board of directors was formed and a constitution was drawn up. The aim of the Mackenzie Union, so named in honor of the first dean, is to serve as a center for students, alumni and faculty, where they may meet informally and profit through coöperation and friendship.



Harding Beauvais Drake Maloney

## Association of Women Students

### Cabinet

Elizabeth Murphy .....*President*  
Alice Gullen .....*Vice-President*  
Alice Baldwin .....*Secretary*  
Angie Warn .....*Treasurer*  
Prof. Ethel B. Chase.....*Adviser*

### Members

Corine Carey	Elizabeth Hill	Dorothy Millspaugh
Daisy Donald	Virginia Hilton	Helen Mueller
Ruth Donald	Dorothy Irwin	Florian Nelles
Helen Gracey		Nedra Smith

THE ASSOCIATION of Women Students is a member of the National A. W. S. and is open to all women enrolled in the colleges. The aims of the A. W. S. are to uphold the highest standards of college life, to support college activities, to promote friendship among the women of the Colleges of the City of Detroit, and to aid each woman to find a suitable field in which to fulfill her ambitions.



Gracey Irwin Hill Mueller Millspaugh Nelles R. Donald D. Donald  
Wilson Baldwin Murphy Gullen Smith



## Junior Women's Council

### Representatives

Alice Baldwin..... *President*  
 Jean Hughes..... *Secretary*

Ruth Aumann	Margaret Hanna	Eleanor Niemetta
Florence Bagnall	Helen Harding	Gertrude Ollikkala
Mary Barrett	Helena Haw	Bernice Plotzke
Ruth Donald	Helen Hilborn	Jeannette Secker
Elizabeth Duncan	Ann Johnson	Pauline Thompson
Jean Dunlap	Jean Kreg	Angie Warn
Dora Hamilton	Elizabeth Mittelstaedt	Carmen Wheeler

THE MEMBERS of the Junior Women's Council are elected each year by the women of the Junior class, whom they represent. The Council is a part of the Association of Women Students and works in conjunction with that body.



Bagnall Ollikkala Hamilton Duncan Secker Wheeler Mittelstaedt  
 Hilborn Barrett Plotzke Johnson  
 Hanna Donald Dunlap Baldwin Hughes Kreg Niemetta

## The Sophomore Cabinet

### Representatives

Dorothy Irwin..... *President*  
 Margaret Mary Love..... *Vice-President*

Jeane Brown	Margaret Hill	Sherill Smith
Marjorie Dawson	Viola Jones	Ruth Tager
Nedra Draper	Mary Jane Koontz	Roberta Thompson
Paula Filpus	Louise Nolan	Jean Thomson
Irene Foster	Violet Peerbolte	Catherine Tremper
Elizabeth Hill	Ethel Smith	Dorothy Wells

THE SOPHOMORE Cabinet is elected by the women of the Sophomore Class. It is an auxiliary of the Association of Women Students, and its aim is to interest Sophomore women in the League, and to further the activities of the Sophomore Class on the campus.



S. Smith Filpus Hill Tager Thompson  
 Dawson Nolan E. Smith Thompson Foster Draper  
 Brown Jones Irwin Love Koontz

## The Freshman Commission

### Representatives

Daisy Donald ..... *President*  
 Jean Crawford ..... *Secretary*

Eleanor Anderson	Henrietta Fairchild	Esther Loewenberg
Lois Bricker	Patricia Graham	Helen Mayhew
Lillian Cassie	Esther Henks	Norma Nash
Winifred Comport	Violet Hill	Mary Dyer Purdy
Irene Duncan	Dorothy Tryon	Adeline Sax
Mabel Edstrom	Helen Lefton	Winifred Smith

THE FRESHMAN Commission is composed of women members of the yearling class, elected to that body for the purpose of aiding the Association of Women Students' Cabinet in the administration of the affairs of the women of the colleges.



Tryon Smith Lefton Henks Duncan Anderson Comport Edstrom Fairchild  
 Bricker Purdy Mayhew Donald Crawford Nash Cassie

## Women's Athletic Association

### W. A. A. Council

Margaret Mary Love ..... *President*  
 Nedra Draper ..... *Vice-President*  
 Mathilda Bator ..... *Secretary*  
 Sophie Korowin ..... *Activities Secretary*  
 Esther Challove ..... *Treasurer*  
 M. Theresa Peters ..... *Faculty Sponsor*

### Class Representatives

Irene Duncan ..... Freshman	Helena Haw ..... Junior
Eleanor Kirschbaum ..... Sophomore	Bertha Politzer ..... Senior

### Heads of Sports

Kathryn Rubert ..... Tennis	Norma Wiesner ..... Basketball
Nedra Draper ..... Hockey	Helen Mayhew ..... Badminton
Virginia Bachrach ..... Golf	Pearl Sachs ..... Volleyball
Dorothy Strohmer ..... Hiking	Helen Massey ..... Aerial Dart
Ethel Smith ..... Swimming	Mary Jenkin ..... Deck Tennis
Marion MacLeod ..... Dancing	Fayga Keidan ..... Bowling
Elizabeth Hill ..... Archery	Dorothy Kutzen ..... Skating
Deris Shimman ..... Baseball	

THE W. A. A., organized to promote intra-mural sports among all the women of the college, has sponsored an extensive social program this year. A mixed and splash party at the beginning of each term, play evenings for faculty and student groups, and a banquet at the conclusion of the fall and spring seasons, were the highlights.



Jenkins MacLeod Strohmer Sachs Haw Keidan Rubert  
 Hill Wiesner Mayhew Smith Duncan Massey Shimman Kutzen  
 Politzer Korowin Challove Love Draper Bator Kirschbaum



## The Student Club

### Cabinet

Charles Merckel.....	<i>President</i>
Louis Esterling.....	<i>Vice-President</i>
Dave Wilson.....	<i>Recording Secretary</i>
Sol Seltzer.....	<i>Treasurer</i>
Clarence Mumma.....	<i>Membership</i>
Fred Ford.....	<i>Programs</i>
Garfield Geddis.....	<i>Luncheons</i>
Jack Wilson.....	<i>Social</i>
William Harlton.....	<i>Forums</i>
Eric Brown.....	<i>Inner Circle</i>
Abe Davis.....	<i>Delegations</i>

### Advisors

Prof. Marshall Wheatley   Ward Schults   Dean Joseph P. Selden   Richard L. Flynn

THE STUDENT Club has nearly doubled its membership during the last year. Sponsored by the Young Men's Christian Association, its aim is to foster a Christian fellowship through which to influence students in applying the principles of Jesus to the whole of life.



Barrows Rose Just Balmer Krigner H. Thomas Proctor Gainey D. Thomas Kedzierski  
G. Thomas Cantine Brooks Ford Mumma Wilson Callard Monterosso Schelter Zimmerman  
Wilson Harlton Geddis Esterling Merckel Seltzer Davis Brown Wheatley

## Y. W. C. A.

### Of the Colleges of the City of Detroit

### Cabinet

Laurabelle Wilson.....	<i>President</i>
Jean Fairgrieve.....	<i>Vice-President</i>
Virginia Eyre.....	<i>Secretary</i>
Lorraine Anderson.....	<i>Treasurer</i>
Nedra Smith.....	<i>Social</i>
Irene Szczesny.....	<i>Publicity</i>
Jean Thomson.....	<i>Devotional</i>
Gail Foster.....	<i>Finance</i>
Dorothy Allen.....	<i>Program</i>
Ruth Werrell.....	<i>Property</i>

### Metropolitan Council

Henlen Piper                      Jean Duncan                      Alice Singer

### Advisors

Dr. Alma Ackley                      Dr. Gertha Williams                      Mrs. Olive Goodrich  
Mrs. Harley Gibb                      Miss Jane Bradley

THE Y. W. C. A. of the Colleges of the City of Detroit is the student organization of the downtown Y. W. C. A. and is open to all women students, regardless of color, race or creed. The organization was founded in 1926 because of the desire of a group of college women to realize full and creative life through a growing knowledge of God.



Allen                      Foster                      Thomson                      Piper                      Szczesny                      Werrell  
Mrs. Goodrich                      Anderson                      Wilson                      Fairgrieve                      Eyre                      Miss Akley



The Engineering Society



Officers

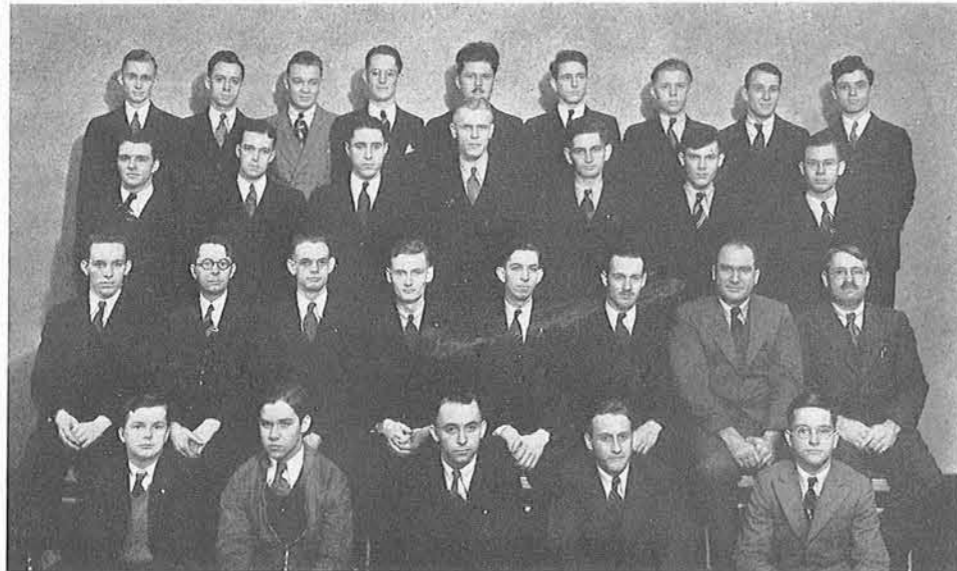
Howard M. Hess.....*President*  
 Don O. Stovall.....*Vice-President*  
 Francis Hulbert.....*Secretary*  
 Roland C. Maier.....*Treasurer*

Members

Bertram Burnside	Raymond Wilson	George Timmons	William Heydorn
John Cicala	Harvey Ringe	Alon Hickok	Carl Baldwin
Alfred Comport	Gordon Wilcox	John Welchmur	Vernon Clark
Elmo Liddel	Albert Bixby	Clarence Mumma	George Kelm
Eugene MacCracken	Karl Ness	Robert MacClaren	Donald Boucher
William Nuttall	Edgar Moore	Reeve Hastings	Eric Anderson
Edward Pratt	Richard Hoben	Robert Callard	Ted Hammen
George Thomas	Neal Jackson	Walter Meyer	Camillo D'Amico
Carl Turnquist	Raymond Hurt	William Best	Raymond Cooper
Russell Venn			

Sponsors

Prof. E. B. Drake      Mr. W. A. Sargent      Dr. A. R. Carr



Venn Comport Ness Liddle Baldwin Hastings Turnquist Bixby D'Amico  
 Callard MacCracken Pratt Ringe Nuttall Boucher Hoben  
 Mumma Sargent Hulbert Hess Stovall Maier Carr Drake  
 Thomas Hammen Cicala Burnside Meyer

Sigma Rho Tau  
 Engineering Forensic Fraternity

Officers

Louis Esterling .....*President*  
 Howard Hess .....*Vice-President*  
 Edward Zimmerman .....*Secretary-Treasurer*

Members

Roger Barrows	Donald Davis	Harold Marsden	Walter Meyer
Robert Callard	Albert Hartoog	Richard Hoben	Carl Turnquist
	Gordon Wilcox	Charles Yarbrough	

Sponsors

Dr. A. R. Carr      A. R. Alliason      Prof. E. B. Drake

SIGMA RHO TAU of the College of the City of Detroit is affiliated with the like organization which had its origin at the University of Michigan in 1930.

On January 30, 1932, the negative debating team (Zimmerman, Davis, Turnquist), defeated the Detroit Institute of Technology on the proposition, "Resolved, That a board of experienced engineers revise the engineering curriculum toward more cultural lines."

On March 18, 1932, the affirmative team (Hess, Davis, Zimmerman), defeated the University of Michigan chapter on the same proposition. In April and May the debating teams competed against the D. I. T., Michigan State College, and the University of Michigan on the subject of St. Lawrence Waterways.



Meyer      Davis      Callard      Hoben      Carlson      Turnquist      Barrows  
 Drake      Zimmerman      Hess      Alliason      Esterling      Carr

## The Gas House Gang Honorary Athletic Organization

Founded at  
Detroit Junior College, 1920

### Officers

Lawrence Russell ..... *King*  
James Dunnigan ..... *Premier*  
George Seros ..... *Chief Escribo*  
Elmer Polzin ..... *Watchdog of the Treasury*  
James Telfer ..... *Bouncer*  
Earl Sloan ..... *Minister of Foreign Affairs*  
Maybury Schweizer ..... *Chief of Vigilance Committee*

### Members

Lawrence Russell	George Thomas	William Glass	Earl Sloan	Carl Maiers
Robert Holiday	James Russell	Bert Nieman	Alex Jamieson	Marvin Oulette
Elmer Krause	George Seros	Carl Blomfield	William Fraser	Clarence Schutt
Charles Benson	James Dunnigan	John Robinson	William Rieman	Wallace Bohn
Fred Renter	Henry Reif	Clarence Mumma	Collin Copeman	William Schultz
Ralph Magnell	Walter Seifferlein	Maybury Schweizer	James Telfer	Ralph Gignac
Bert Smith	Elmer Polzin			Jack Irwin

### Pledges

Jack Morton    George Malesky    Harold Bowie    Joe Como    William Bray

THE GANGSTERS of the Gas House are prominent men on the campus, who have pledged themselves to support all college activities. Their major project socially is the traditional Gas House Ball, the proceeds of which are given to a loan fund for worthy athletes.



Como    Rieman    Mumma    Morton    Malesky    Krause  
Maiers    Glass    Scifferlein    Schweizer    Copeman    Benson  
Thomas    Holiday    Schultz    Sloan    L. Russel    Dunnigan    Gignac    Schutt    Fraser    J. Russell  
Seros    Telfer    Polzin    Barr



Founded 1931

## The Rajahs Local Club

### Officers

Fall Semester		Spring Semester
Ken Haines ..... <i>President</i>		Charles A. Meyer
Charles A. Meyer ..... <i>Vice-President</i>		Joe Como
John Frurip ..... <i>Secretary</i>		Robert Keigen
Edward Moore ..... <i>Treasurer</i>		Edward Berg

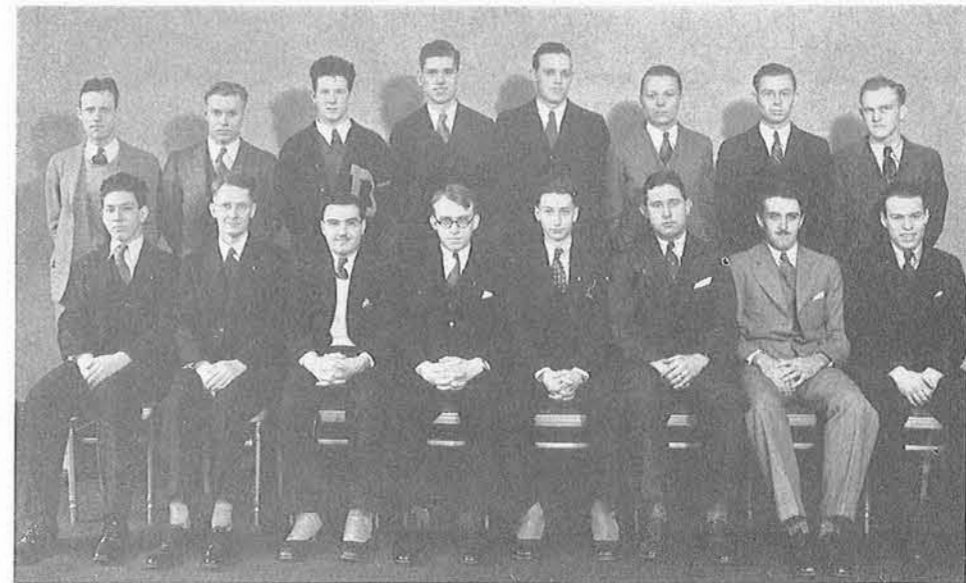
### Members

Ted Barr	Richard Hoben	Frederick Helmboldt
Edward Berg	Robert Keigen	Ed Moore
Joe Como	George Kelm	Charles Meyer
John Crippen	John Frurip	Stanley Moore
Collis Cantine	Ken Haines	William Atkinson
	Alon Hickok	

### Associate Members

DuCharme Boillotat    Jack Jennette    Bryan Davis

THE RAJAHS were granted a charter and recognized by the Student Organizations Committee in March, 1931. The organization is composed for the most part of members of the athletic teams and it aims to promote an interest in athletic and social activities.



Atkinson    Kelm    Barr    Moore    Crippen    Helmboldt    Hoben    Frurip  
Hickok    Stilgenbauer    Como    Meyer    Berg    Keigen    Cantine    Haines



## The Home Economics Club

### Officers

Irma Allen ..... *President*  
 Helen Gracey ..... *Vice-President*  
 Mary D'Agostino ..... *Secretary*  
 Marian Landesmann ..... *Corresponding Secretary*  
 Maxine Vaughn ..... *Treasurer*

### Members

Irma Allen	Hellen Mueller	Jean Keyes
Rareen Bellows	Betty Rothfus	Jean King
Mary D'Agostino	Maxine Vaughn	Erdine Mahaffy
Helen Gracey	Myra Bates	June Rose
Jean Hughes	Helen Bunch	Katherine Skinner
Sarah Kellogg	Nellie Bunting	Dorothy Jones
Jean Kennedy	Louise Emerson	Ellen Frankilla
Marion Landesmann	Elizabeth Foster	Ann Milowsky
Neti Boyes	Martha Hamblin	

### Sponsors

Mrs. Frances Sanderson    Mrs. Olive Goodrich    Miss Henrietta Lang

THE HOME ECONOMICS Club is composed of Detroit City College women who are interested in Home Economics. The organization was founded November 20, 1931.



Top Row: Newman, Caie, Needorf, Jones, Bayes, Moore, Smith, Johnston, Foster, Kellogg, Mueller, Bates, Roberts, Kopera, Frankilla, Bellows. Middle Row: Henig, Capeling, Mahaffey, Lasker, Kennedy, Rose, Wood, Sanderson, Goodrich, LeFever, Hadley, Emerson, Morgan, Rybycka, Irwin. Bottom Row: Hughes, Scouten, Landesmann, Bunting, Vaughn, Allen, Gracey, D'Agostino, Comport, Kampanen, Platte.

## Teachers' College Art Guild

### Officers

Marion Boyd ..... *President*  
 Emily Adams ..... *Vice-President*  
 Bertha Politzer ..... *Secretary*  
 Gertrude Kruszewska ..... *Treasurer*  
 Evelyn Read ..... *Publicity*

### Members

Freda Albrecht	Helen Enberg	Inez Leeper	Idolene Williams
Clara Bachman	Virginia Grant	Dorothy Lober	Rose Levin
Pearl Bornstein	Ray Heeren	Alice Paulus	Roland Schuholtz
Gertrude Bugbee	Dorothy Hock	Anna Robb	Edith Hassin
Vera Burns	Margaret Kaler	Margaret Tainsh	Marjorie King
Eleanor Devlin	Elizabeth Kiehn	Virginia Valentine	Jean Noble
Helen Draper			Helen Tucker

### Sponsor

Jane Betsy Welling

THE ART GUILD is a group of T. C. students who have a common interest in Art and are grouped together to find expression therein. The organization was originated in 1926 at Detroit Teachers' College.



Burns Kaler Valentine Noble Draper Grant Leeper Levin Bachman Paulus Welling King Hassin Albrecht Bornstein Kiehn Conroy Lober Tucker Devlin Heeren Hock Kruszewska Boyd Adams Tainsh Read Schulholtz



## Gamma Eta

### Officers

First Semester		Second Semester
Pauline Dombrowski	..... <i>President</i> .....	Rhoma Leverton
Dorothy Kutzen	..... <i>Vice-President</i> .....	Ruth Anderson
Verna Fumson	..... <i>Secretary-Treasurer</i> .....	Nellie Van Ainam
Marjorie Ricketts	..... <i>Historian</i> .....	Marjorie Ricketts

### Members

Dorothy Bailie	Helen Gee	Lillie Schraeder
El Vera Dahlquist	Margaret Glew	Margaret Starnes
Verna Dennis	Evelyn Grossman	Ethel Stinton
Rosa Dominiak	Beulah Hobbs	Frances Taylor
Virginia Flory	Dorothy Lubin	Ruth Young
	Marion MacDonald	

### Sponsor

Miss Alice Camerer

THE GAMMA ETA Club is an organization of T. C. students whose purpose is the bringing together, in social and professional activity, of those who are interested in Geography.



Dominiak      Kutzen      Schraeder      Glew      Young  
Lublin      Dennis      Leverton      Dombrowski      Gee

## Kindergarten Club

### Officers

Anne Kanter	..... <i>President</i> .....
Margaret Doig	..... <i>Vice-President</i> .....
Grace Wylie	..... <i>Secretary</i> .....
Dorothy Selik	..... <i>Social Chairman</i> .....

### Members

Rowena Roberts	Katherine Stark	Evelyn Falk
Freida Shevitz	Jeanette Edeleman	Rosaline Goldberg
Mamie Hoffenburg	Donna Conroy	Mildred Holt
Mary Louise Nelius	Dora Cohen	Hortense Marlowe
Dorothy Coulter	Betty Geller	Helen Peirce
	Helen Zawada	

### Sponsors

Jessie Wedin      Elise Lemaire

THE KINDERGARTEN Club was organized at Detroit Teachers' College in 1921 in order to provide a means for students interested in Kindergarten-Primary education to become a more social group and to further their interests in that branch of teaching.



Johnson      Goldenberg      Roberts      Conroy      Nelius      Shevitz  
Stark      Wylie      Kanter      Doig      Selik      Cohen

## Home Room Club

### Officers

Sadie Nelson..... *President*  
 Roberta Dye..... *Vice-President*  
 Bernice Schreader..... *Secretary-Treasurer*  
 Sarah Zach..... *Social Chairman*

### Members

Dorothy Aronson	Ida Hertz	Florence Rothfus
Laura Blackman	Irene Jonas	Bernice Scheer
Bessie Bunin	Dorothy Kutzen	Ruth Skurven
Marie Bush	Rhoma Leverton	Vivian Sukenic
Virginia Fleming	La Verne Laidlaw	Caroline Van Loon
Kathleen Goudy	Emma Minkoff	Miriam White
	Yvonne Mitchell	

### Sponsors

Julia M. Hubbard      Effie M. Downer      Clara E. Champion

THE HOME ROOM Club was organized in order to provide a means for students of Teachers' College, interested in the same branch of teaching, to become a more socially integrated group and to further educational and cultural interests in Home Room activities. The Club originated at Detroit Teachers' College in 1928.



Sukenic    Laidlaw    Bunin    Van Loon    Kutzen    Scheer    Aronson  
 Goudy    Schreader    Nelson    Zach    Leverton

## Rho Chi

### Officers

Doris Eneix..... *President*  
 Betty Finney..... *Vice-President*  
 Emma Rittinger..... *Secretary*  
 Elaine Plues..... *Treasurer*

### Members

Marie Couley	Rose Gershenson	Rosina Mohaupt
Lucy Cope	Mary Gordon	Florence Pollock
Margaret Dunford	Laura Lee Hamlin	Margaret Sinclair
Dorothy Ellsworth	Catherine Lamesfeld	Pauline Walker
Margaret Gallagher	Jane McCurdy	Eleanore Wheat
	Jean McKay	

### Sponsor

Effie M. Downer

THE RHO CHI Club was organized at Detroit Teachers' College in 1921, its object being to further the interest of the members in outdoor life.



Cauley    Gershenson    Gallagher  
 Lamesfeld    Plues    Hamlin    Walker

## Women's Health Education Club

### Officers

Norma Wiesner.....*President*  
 Lillian Heideman.....*Vice-President*  
 Esther Challove.....*Secretary*  
 Freida Roth.....*Treasurer*  
 Ruth L. Murray.....*Sponsor*

### Members

Sylvia Aichenbaum	Winifred Herpel	Dorothy Strohmer
Pearl Sachs	Elsie Rogoff	Doris Shimman
Eleanor Kirschbaum	Ethel Smith	Corrine Carey
Helena Haw	Martha Thierry	Viola Schlack
Lucille Quamby	Virginia Bachrach	Margaret Kessler
Elizabeth Wolter	Rebecca Cohen	Catherine Rubert
Edith Levitt	Felicia Dewicki	Bertha Braund

THE WOMEN'S HEALTH Education Club was organized for students interested in Health Education in order to provide a means for the professional growth of the members and to aid them in formulating the standards of the department. It was organized in 1929 at Detroit Teachers' College.



Kirschbaum Cohen Strohmer Carey Levitt Thierry Braund Rogoff  
 Herpel Dewicki Bachrach Smith Shimman Sachs Haw Schlack  
 Murray Rubert Challove Weisner Heideman Roth Aichenbaum

## Men's Health Education Club

### Officers

Wilbert Nieman.....*President*  
 David Beauvais.....*Vice-President*  
 Gerald Fitzgerald.....*Sergeant-at-Arms*

### Members

William Dineen	James Russell	Phillip Bruno
William Storen	John Agnew	David Collins
Carlo Tuzzalino	Constantine Lisowski	Clarence Schutt
LeRoy Dues	Irving Murphy	Herbert Spathelf

### Sponsors

Mr. Vaughan Blanchard      Prof. David Holmes      Dr. Frank Oktavec

THE MEN'S HEALTH Education Club is a group of Teachers' College students who have a common interest in Health Education and who wish to continue and improve their interest in this field of work. The Club was organized at Detroit Teachers' College in 1931.



Agnew Lisowski Dues Spathelf Storen Bruno Russell  
 Murphy Tuzzalino Beauvais Nieman Fitzgerald Schutt Collins



## Natural Science Club

### Officers

Norrine Kemter .....*President*  
Alice Singer .....*Secretary-Treasurer*

### Members

Ethel Stinton  
Clara Kahn  
Eleanor Lazowski  
Bertha Millman  
Margaret Scholnek

Yvonne Mitchell  
Ruth Skurvin  
Anna Gerhardt  
Grace Thomas

Virginia Chorley  
Leah Rosenthal  
Lillian McIntosh  
Esther Lypoldt  
Minnie Martini

### Sponsor

Dr. Florence Billig

THE Natural Science Club was organized at Detroit Teachers' College in February, 1932. It is composed of a group of students who have a common interest in the study of nature and who desire to further their interests in this branch of teaching.



Chorley    Millman    Baker    Lazowski    Carey    Rosenthal  
Stinton    Kemter    Billig    Singer    Scholnek



Devlin Morse Kaler Mounteer Van Sickle Stark Balter  
Nelles Hughes Millspaugh Warmbold Smith Bornstein Duncan

### Inter-Sorority Council

Established at the  
Colleges of the City of Detroit, 1926

#### Officers

Eleanor Warmbold.....*President*  
Marion Smith.....*Secretary-Treasurer*

#### Representatives

Eleanor Devlin	Alpha Sigma Tau	Margaret Kaler
Marion Smith	Alpha Theta Sigma	Carol Van Sickle
Mary Barrett	Delta Gamma Chi	Jean Hughes
Jane E. Morse	Pi Kappa Sigma	Katharine Stark
Betty Duncan	Sigma Sigma	Dorothy Millspaugh
Pearl Bornstein	Sigma Theta Delta	Lillian Balter
Eleanor Warmbold	Zeta Chi	Emice Mounteer

#### Faculty

Miss Ethel B. Chase      Miss Emelyn Gardner



Established 1927

### Alpha Theta Sigma Local Sorority

#### Officiarii

Carol Van Sickle.....*President*  
Gertrude Ollikkala.....*Vice-President*  
Elizabeth Webb.....*Recording Secretary*  
Valerie Pierpont.....*Corresponding Secretary*  
Bernadine Plotzke.....*Treasurer*

#### Sorores in Facultate

Miss Katherine Conover      Mrs. Olive Goodrich      Miss Henrietta Lang  
Miss Thelma James

#### Sorores in Universitate

Jean Alexander	Dorothy Hallet	Alberta Korpman	Helen Schmid
Lillian Cassie	Anne Johnson	Jane McPhail	Marion Smith
Melissa Cross	Jean Keyes	Loretta Platte	Anne Terhardt
Charlotte Hagen	Ethel Knechtel	Rowena Roberts	Angie Warn
	Caroline Welz		

#### Neophytes

Esther Blair      Mary Ruth Baker      Ellen Smith      Anna Martyn



Johnson Korpman Hagen Knechtel Hallett  
Alexander Schmid Cross Welz Terhardt Smith Roberts  
Platte Plotzke Ollikkala Van Sickle Pierpont Webb McPhail

**Alpha Sigma Tau**  
Theta Chapter  
National Sorority

Alpha Chapter  
Established 1898,  
Ypsilanti

**Officiarii**

Margaret Kaler.....*President*  
Jane Evans.....*Vice-President*  
Adelaide Feeney.....*Recording Secretary*  
Helen Tucker.....*Corresponding Secretary*  
Mary Jo Carey.....*Treasurer*  
Lenore Filer.....*Chaplain*  
Julia Falvey.....*Custodian*  
Carmen Delaney.....*Historian*

**Sorores in Facultate**

Miss Edith Smith      Dr. Gertha Williams

**Sorores in Universitate**

Margaret Bynum      Donna Conroy      Eleanor Devlin  
Corrine Carey      Norine Cooper      Gay Sauve

**Neophytes**

Rose Boccarosa      Pauline Dombrowski      Sally Kraetke  
Myrtle Correll      Marie Donegan      Mary Louise Nelius  
Norine Kemter



Filer   Carey   Donegan   Johnson   Sauve   Conroy   Cooper   Delaney   Gee   Bynum  
Kraetke   Feeney   Carey   Kaler   Evans   Tucker   Devlin



Established 1926

**Delta Gamma Chi**  
Local Sorority

**Officiarii**

Jean Hughes.....*President*  
Helen Bunch.....*Vice-President*  
Eleanor Niemetta.....*Recording Secretary*  
Catherine Tremper.....*Corresponding Secretary*  
Edith Peluso.....*Treasurer*

**Sorores in Facultate**

Mrs. Lucile Borgman      Mrs. Alfred Nelson      Mrs. Ray Skinner  
Mrs. Arthur Eaton      Miss Elsie Townsend

**Sorores in Universitate**

Ruth Aumann      Mary Jane Koontz      Helen Mueller  
Mary Barrett      Carol Maas      Florian Nelles  
Irene Duncan      Katherine McArdle      Mary Dyer Purdy  
Irene Foster      Ruth McKiernan      Jane Wickham  
Marjorie Hedgcock      Myrtle Mow      Florence Pollock

**Neophytes**

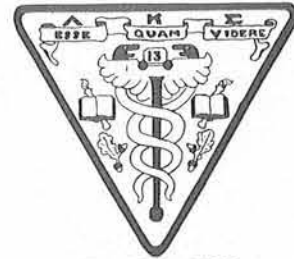
Thelma Beulow      Helen Irwin      Nedra Reed  
Nedra Draper      Isabel Jenkins      Winifred Smith  
Wanda Ferszt      Katherine Moore      Helen Vibbert  
Kathryn Henig      Jane Muldoon      Martha Young



Smith   Mow   Nelles   Pollack   Wickham   Koontz   Maas  
Vibbert   McKiernan   Mueller   Duncan   Hedgcock   Foster   McArdle   Purdy  
Borgman   Tremper   Niemetta   Hughes   Bunch   Peluso   Townsend



Lambda Kappa Sigma  
Omicron Chapter  
National Pharmaceutical Sorority



Officarii

Established 1913

Eugenia Lemke ..... *President*  
Bella Moskowitz ..... *Vice-President*  
Helen Linsky ..... *Corresponding Secretary*  
Stella Grych ..... *Recording Secretary*  
Ruth Whyard ..... *Treasurer*

Sorores in Facultate

Dr. Alma Ackley      Mrs. Frederick T. Bradt      Mrs. Ernest R. Crandall

Sorores in Urbe

Mrs. Olga Kravchell      Mrs. Irene Tembrowski

Sorores in Universitate

Thelma Beaubien      Jennie Jablonowski      Margaret Ripepi  
Wanda Bonk      Angeline Kupszynski      Margaret Shaughnessy  
Fern Cloutier      Rena Miller      Nellie Smalarz  
Claudia Hinline      Mildred Parusiewicz      Erma Turska



Parusiewicz      Hinline      Turska      Jablonowski      Miller      Bonk  
Kupszynski      Grych      Moskowitz      Lemke      Linsky      Smalarz

Established 1894  
Ypsilanti, Michigan

Pi Kappa Sigma  
National Sorority

Officarii

Dorothy Gitschlag ..... *President*  
Katherine Stark ..... *Vice-president*  
Lucille Hayes ..... *Corresponding Secretary*  
Dorothy Allen ..... *Treasurer*  
Jane E. Morse ..... *Recording Secretary*  
Genevieve Bartlett ..... *Sergeant-at-Arms*  
Ethel Wilson ..... *Editor*  
Evelyn Falk ..... *Keeper of Archives*  
Louise Scofield ..... *Press Agent*

Sorores in Facultate

Miss Ruth Reeves      Mrs. O. E. Seaton

Sorores in Universitate

Virginia Baker      Margaret Gallagher      Theodora Johnson      Bernice Scheer  
Mary Brewster      Marion Gitschlag      Jennie Lyon      Ethel Smith  
Elvera Dahlquist      Maxine Haskins      Lillian McIntosh      Lucile Veug'ers  
Verna Dennis      Mildred Holt      Lillie Schraeder      Lois Warnock  
Mary Margaret Johnson

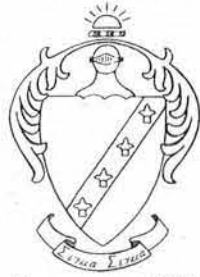
Neophytes

Marion Lakin      Marion Goodman      Myrtle Wuefing



Veuglers      Warnock      McIntosh      Dahlquist      Baker      T. Johnson      Gallagher  
Scheer      Scofield      Schraeder      Wuefing      M. M. Johnson      Brewster      Dennis  
Gitschlag      Falk      Allen      Stark      Morse      Wilson      Hayes

**Sigma Sigma**  
Local Sorority



ESTABLISHED 1926

**Officarii**

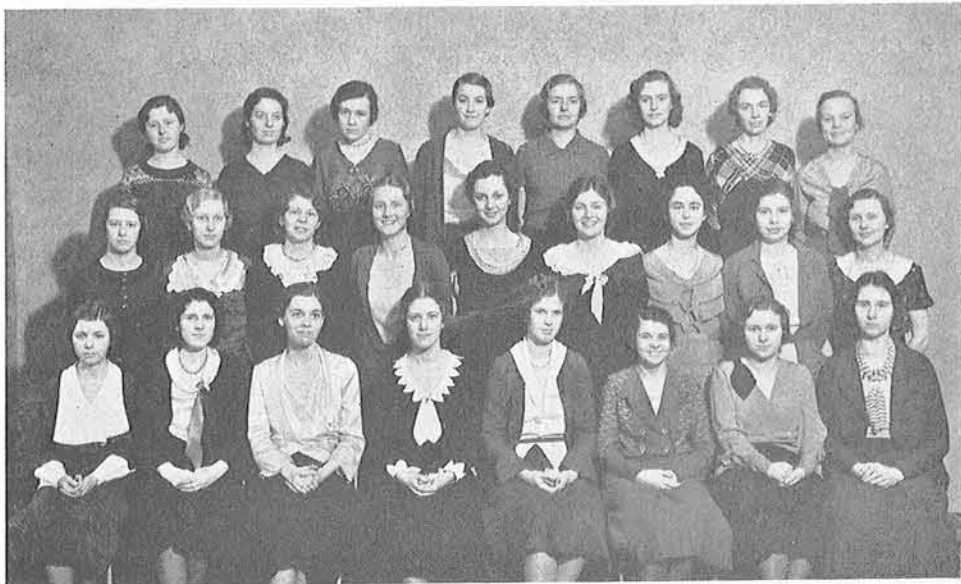
Elizabeth Duncan ..... *President*  
 Dorothy Millsbaugh ..... *Vice-President*  
 Dora Hamilton ..... *Corresponding Secretary*  
 Florence Bagnall ..... *Recording Secretary*  
 Helen Howell ..... *Treasurer*

**Sorores in Facultate**

Miss Blanche Goodell      Mrs. R. C. Miller      Mrs. David Mackenzie  
 Mrs. H. L. Gibb              Mrs. Wilford Coffey      Mrs. John Wilcox

**Sorores in Universitate**

Caroline Baker	Jane Eley	Elizabeth Mayer
Helen Bates	Virginia Grant	Virginia MacCracken
Aileen Boughton	Alice Gullen	Elizabeth Mittelstaedt
Claudine Caie	Helena Haw	Caroline Slaby
Jean Duncan	Esther Henks	Helene Schields
Jean Dunlap	Helen Hilborn	Sherrill Dean Smith
	Dorothy Irwin	



Smith Grant Baker Dunlap MacCracken Irwin Schields Bates  
 Duncan Mayer Haw Mittelstaedt Eley Hilborn Caie Henks Gullen  
 Boughton Hamilton Howell Duncan Millsbaugh Bagnall Slaby Goodell



Established 1926

**Sigma Theta Delta**  
Local Sorority

**Officarii**

Pearl Bornstein ..... *President*  
 Lenore Cohen ..... *Vice-President*  
 Belle Franovitz ..... *Secretary*  
 Florence Cohen ..... *Treasurer*

**Soror in Facultate**

Miss Katherine Ripman

**Sorores in Universitate**

Dorothy Aronson	Esther Friedman	Betha Raepe
Lillian Balter	Frieda Greenbaum	Josephine Saltzman
Florence Budnitsky	Mamie Hoffenberg	Betty Seligson
Mariam Edwards	Dorothy Kutzen	Annette Share

**Associates**

Sophie Gornbein	Caroline Silver	Marjory Schembeck
Pearl Chafets	Irene Beesky	Laura Simon
Charlotte Hirschberg	Helen Henig	Thelma Yackness
Evelyn Patt	Esther Leinoff	



Budnitsky Saltzman Pollack Share Friedman Greenbaum  
 Schembeck Yackness Patt Kutzer Gornbein Raepe Simon  
 Balter L. Cohen Franovitz Bornstein E. Cohen Aronson

**Zeta Chi**  
Local Sorority



Established 1926

**Officarii**

Eunice Munteer.....*President*  
Helen Harding.....*Vice-President*  
Evelyn Schwarz.....*Recording Secretary*  
Carmen Wheeler.....*Corresponding Secretary*  
Grace Meredith.....*Treasurer*

**Sorores in Facultate**

Miss Louise Conklin	Dr. Katherine Chamberlin	Miss Jessie Metcalf
Mme. Simone B. de Marivetz	Mrs. Venetta Kemmer	Mrs. Alice Miller
Miss Adele Dryer	Mrs. Thelma MacLachlan	Mrs. Lucy Selden

**Sorores in Universitate**

Dorothy Bailie	Isabelle Schelbe	Alice Smith	Helen Read
Jeane Brown	Marjorie Dawson	Doris Stewart	Betty Reule
Margarite Brown	Lucille Engel	Marion Thune	Eleanor Warmbold
Hortense Bruer	Catherine Hartman	Grace Mahan	Dorothy Wells
Jane Rochford	Margaret Hill	Elizabeth Murphy	Monica White
Janet Ruycon	Virginia Hilton	Evelyn Read	

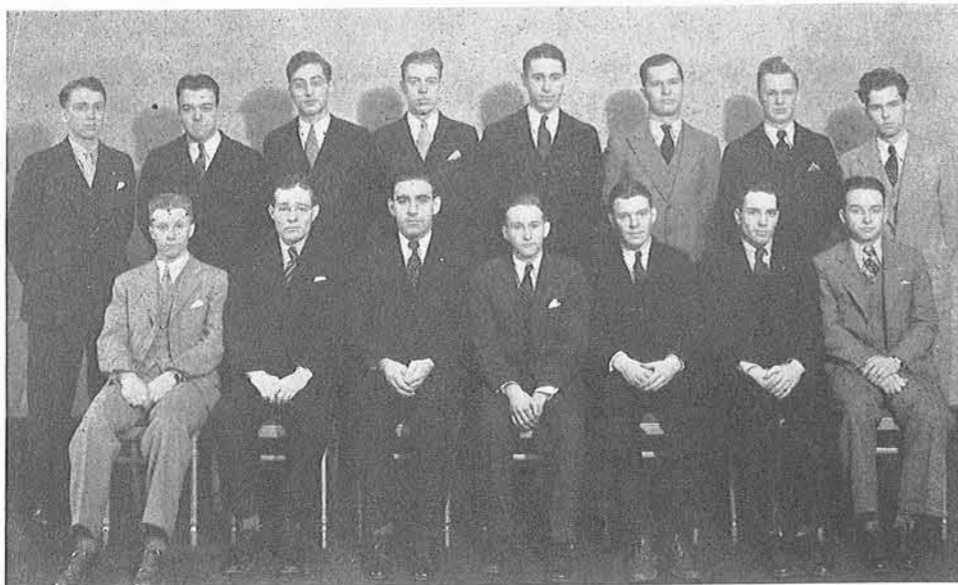
**Neophytes**

Helen Cline	Nona Matin	Louise Nolan	Betty Parkinson
-------------	------------	--------------	-----------------



Thune	Brown	Read	Reule	Ruycon	Bailie	Schelbe	Smith	Read
Murphy	Dawson	Engel	Hill	Hartman	Warmbold	White	Hilton	Mahan
Bruer	Brown	Rochford	Schwarz	Munteer	Harding	Meredith	Wells	





Pell Jay Spettal Harding Pratt Polzin Cassidy  
Schultz Mason Nieman Burnside Golder Webster DeShon

### The Inter-Fraternity Council

Established at the  
College of the City  
of Detroit in 1926

#### Officers

Bertram Burnside.....*President*  
Wilbert Nieman.....*Vice-President*  
Harry Golder.....*Recording Secretary*  
Karl Schmidt.....*Corresponding Secretary*  
Rollin R. Mason.....*Treasurer*

#### Representatives

George Cassidy.....	ALPHA DELTA PSI .....	William Schultz
Harry Harding.....	ARABS .....	Rollin Mason
Karl Schmidt.....	CHEGA .....	Harold Pell
Bertram Burnside.....	EPSILON SIGMA .....	Edward Pratt
William Rieman.....	GAMMA PHI DELTA .....	Franz Spettel
Wilbert Nieman.....	KAPPA CHI .....	Stuart Lottier
William Flashenberg.....	PHI ALPHA.....	Harold Rosen
Martin Golinski.....	PHI DELTA CHI .....	Walter Lemanski
Elmer Polzin.....	PI PHI OMICRON .....	Stanley Michaelson
Walter Hansz.....	SHAHS .....	Elden Jay
Harry Golder.....	SPHINX .....	Frank DeShon
Joseph P. Selden.....		Faculty



Established 1925

### Alpha Delta Psi Local Fraternity

#### Officarii

William C. Schultz.....*President*  
B. Earl Sloan.....*Vice-President*  
Jack Morton.....*Secretary*  
George Seros.....*Treasurer*

#### Fratres in Facultate

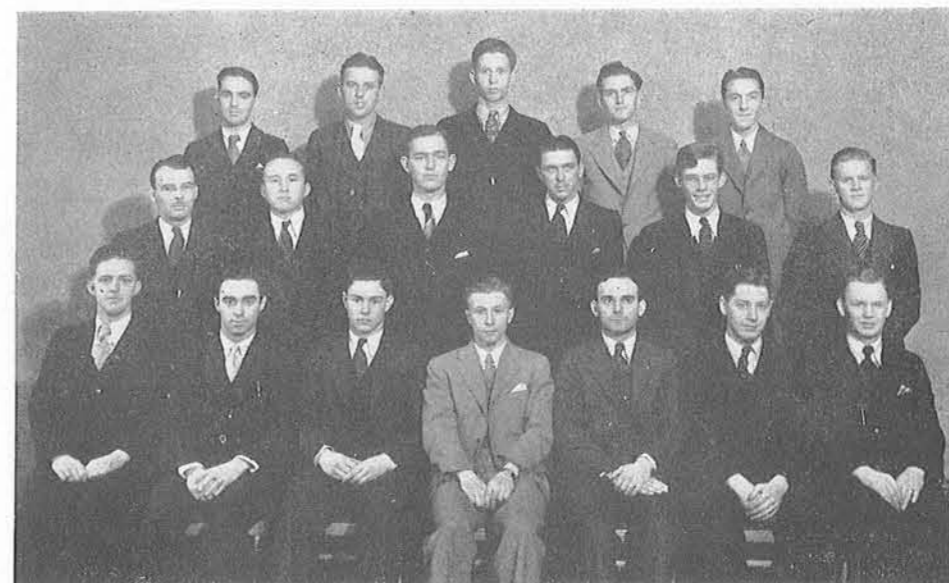
Dean Wilford Coffey      Prof. D. C. MacLachlan      Dean Joseph Selden

#### Fratres in Universitate

Jerry Bieber	John Cuttle	Robert Gutow	Marvin Oullette
George Botts	Floyd Dain	Edwin Hubbard	James Russell
William Bray	James P. Dunnigan	George Hughes	Fred Renter
George Cassidy	Walter Feeney	Phillip MacKinder	James Williams
	Wilbur Ebeling	James Nelson	

#### Neophytes

William Glass      Arthur Smith      Jerry Fitzgibbons  
Justus Cohoe      William Davis      Gerdon Payne



Dave      Dunnigan      Oullette      Fitzgibbons      Cuttle  
Mackinder      Williams      Glass      Cohoe      Hughes      Feeney  
Bray      Seros      Morton      Schultz      Slcan      Bieber      Cassidy



## Epsilon Sigma

Local Engineering Fraternity



Established 1927

### Officarii

Edward W. Pratt ..... *President*  
 Harvey A. Ringe ..... *Vice-President*  
 Don O. Stovall ..... *Secretary*  
 William J. Nuttall ..... *Treasurer*

### Fratres in Facultate

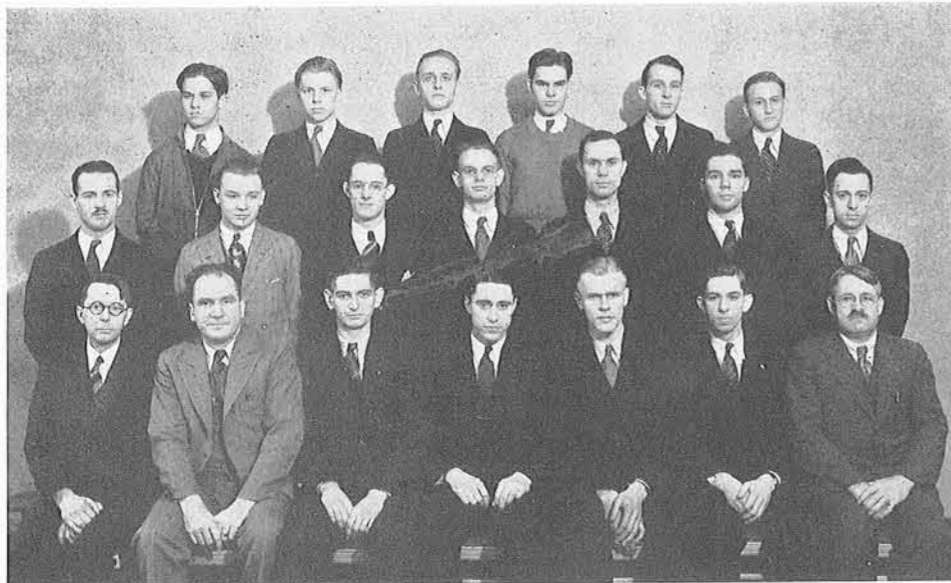
Dr. A. R. Carr                      Prof. E. B. Drake                      Mr. W. A. Sargent

### Fratres in Universitate

Albert Bixby	Allen Davidson	Elmo Liddel	Edward Pratt	Carl Turnquist
Fred Boyer	Leonard Hill	Roland Maier	Harvey Ringe	John Welchner
Bertram Burnside	Francis Hulbert	Karl Ness	Don Stovall	Gordon Wilcox
Alfred Comport	David Koepfgen	William Nuttall	Delbert Suydam	Raymond Wilson

### Neophytes

A. L. Carrier                      Ted Hammen



Hammen	Turnquist	Welchner	Hill	Bixby	Burnside
Maier	Ness	Liddel	Hulbert	Suydam	Davidson
Sargent	Carr	Nuttall	Pratt	Ringe	Stovall
				Comport	Drake

## Gamma Phi Delta

Local Fraternity



Established 1924

### Officarii

1931

1932

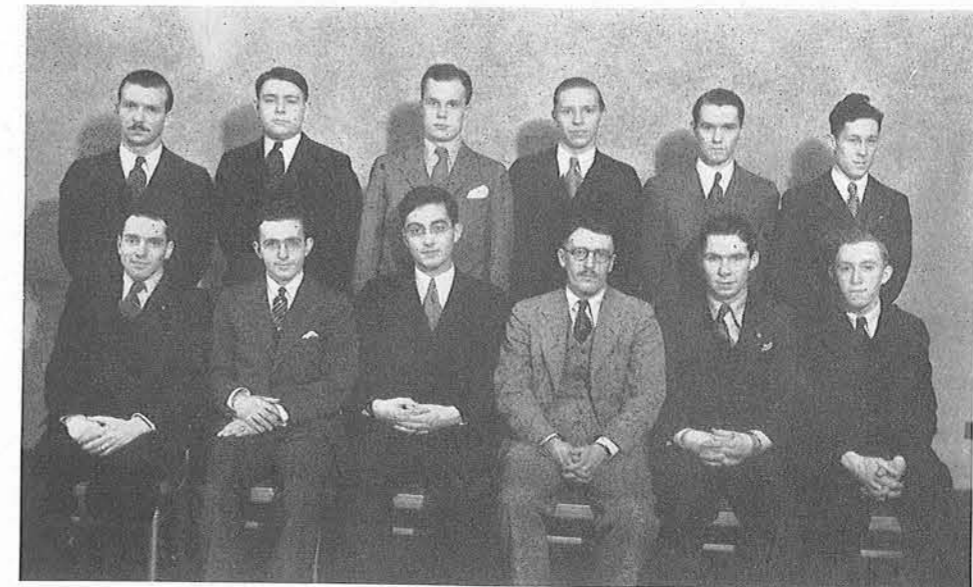
Franz Spettel ..... <i>President</i>	George Brennan
Donald Jenette ..... <i>Secretary</i>	Ken Campbell
George Brennan ..... <i>Treasurer</i>	Fred Boyer
Robert Webster ..... <i>Social</i>	Robert Webster
William Black ..... <i>Membership</i>	William Black
Kenneth Campbell ..... <i>House</i>	Donald McKenny

### Frater in Facultate

Preston H. Scott

### Fratres in Universitate

Jack Bermel	Robert Campbell	Donald McKenny
William Black	Michael Gallagher	William Rieman
George Brennan	George Hurn	Franz Spettel
Fred Boyer	Don Jenette	Robert Webster



Reske	Black	Rieman	Bermel	McKenny	Jennette
Webster	Boyer	Spettel	Scott	Gallagher	Campbell



**Kappa Alpha Psi**  
National Fraternity



Founded: University of Indiana 1911  
Established at Detroit, 1927

**Officarii**

Charles Fisher ..... *Polemarch*  
Earnest Marshall ..... *Vice-Polemarch*  
John Lewis ..... *Keeper of Records*  
Hershell Ritchie ..... *Keeper of Exchequer*  
Cleave Mossengile ..... *Stratigus*

**Fratres in Facultate**

Joseph P. Selden      Ronald T. Lakey

**Fratres in Urbe**

Sidney Borthwell      Wendell Murphy      Joseph Reid  
Lawrence Duncan      Oakes White

**Fratres in Universitate**

Hershell Ritchie      John Lewis      Earnest Marshall  
Charles Fisher      Cleave Mossengile

**Neophytes**

Effie Mossengile      Jack Woods



Woods  
Marshall

Lewis  
Mossengile

Fisher  
Ritchie

Established 1924

**Kappa Chi**  
Local Fraternity

**Officarii**

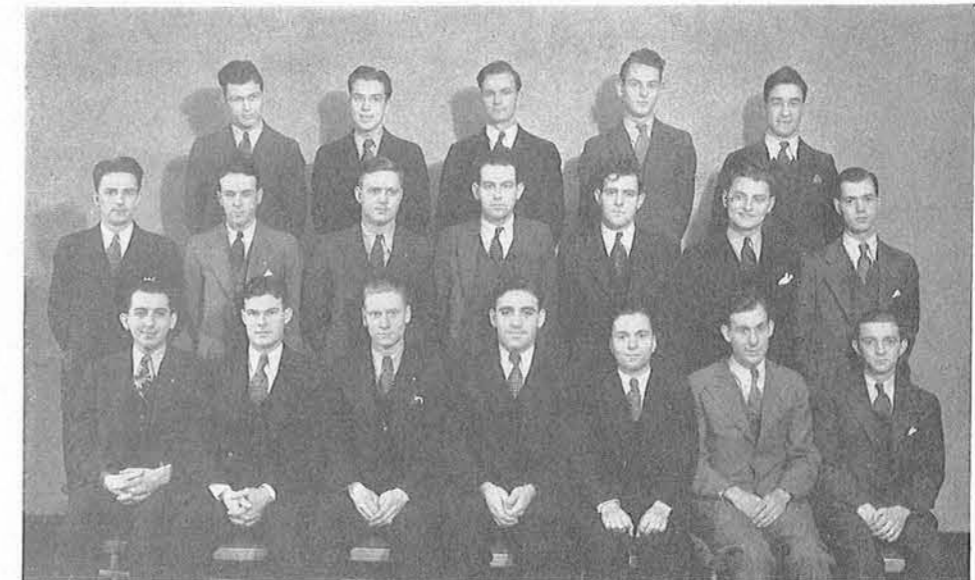
Wilbert Nieman ..... *President*  
Albert Langtry ..... *Vice-President*  
Earle Graser ..... *Secretary*  
Carl Blomfield ..... *Sergeant-at-Arms*  
Franklin Shepard ..... *Treasurer*

**Fratres in Facultate**

Prof. Frank Kemmer      Dr. Alfred Nelson      Mr. Howard Donnelly

**Fratres in Universitate**

David Beauvais      Earle Graser      Thomas Irwin      Stuart Lottier      LeRoy Neesley  
Carl Blomfield      Robert Holiday      Don Kennedy      Paul Lutzeier      Wilbert Nieman  
Louis Doerr, Jr.      Orin Thomas      Walter Klinger      Thomas Mason      John Rosevear  
Irving Evans      Sidney Moore      Harry Lange      Robert McClure      Nevin Salot  
William Fleming      Jack Irwin      Albert Langtry      Roger Merrick      Fred Shepard  
Al Thomas



Sprunk      Neesley      Thomas      Merrick      Monterosso  
Graser      Kennedy      Holiday      Weatherby      Briggs      Lottier      Evans  
Lutzeier      Lange      Langtry      Nieman      Shepard      Blomfield      Salot

Pi Alpha Phi  
Local Fraternity

ESTABLISHED 1930

Officiarii

Malik B. Dardarian.....*President*  
Norman S. Kling.....*Vice-President*  
Fred Seuffert.....*Treasurer*  
George Luttermoser.....*Secretary*

Frater in Facultate

Samuel L. Bruer

Fratres in Universitate

Harold Brahm	Garfield Geddis	John Maczewski
Roswell G. Burroughs	John E. Holko	Thomas G. Mandelaris
Malik B. Dardarian	Casimer Kedzierski	Harry H. Menton
Roy Cook	Norman S. Kling	Fred E. Seuffert
George Eyster	George Luttermoser	Lester C. Sherman
Thomas French		Arthur Wilson



Cook      Maczewski      Mandelaris      Kedzierski  
French      Holko      Brahm      Wilson      Eyster  
Sherman      Kling      Dardarian      Seuffert      Luttermoser



Pi Phi Omicron  
Local Fraternity

Established 1928

Officiarii

Elmer Polzin.....*President*  
Harold Reif.....*Vice-President*  
William Browne.....*Secretary*  
Douglas Maples.....*Treasurer*

Frater in Facultate

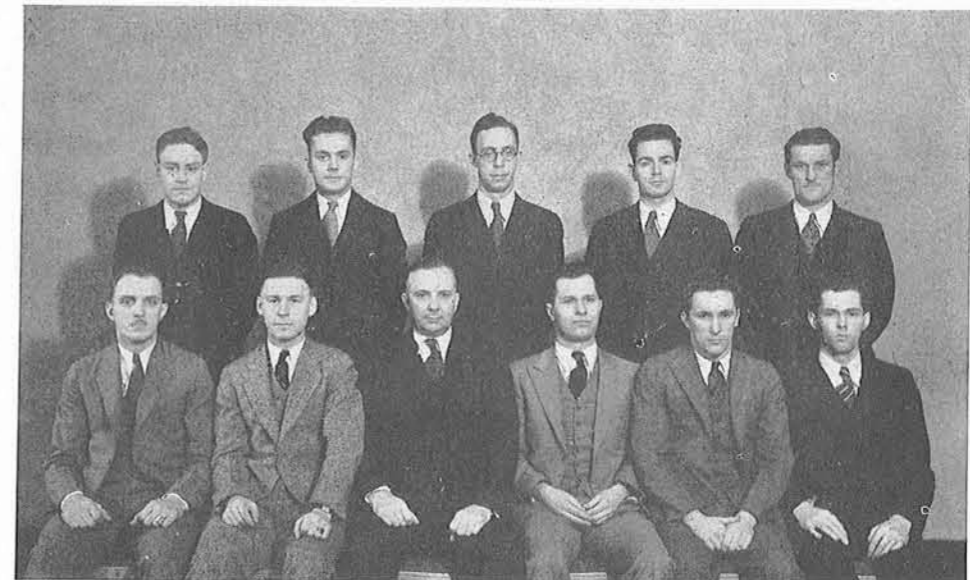
Dean Don S. Miller

Fratres in Universitate

William Browne	Ralph Magnell	Elmer Polzin	Clarence Schutt
Douglas Maclain	Douglas Maples	Harold Reif	Lyle Townsend

Fratres in Urbe

Henry Backus	Ivan Berlin	Howard Hammer	Stanley Michaelson
Fred Badger	Robert Burns	Jarvis Hyatt	Harry Seifferlein
	Jacob Wenzel		



Backus      Michaelson      Badger      Burns      Magnell  
Schutt      Reif      Miller      Polzin      Maples      Browne

**Pi Tau Sigma**  
Local Fraternity

ESTABLISHED 1929

**Officarii**

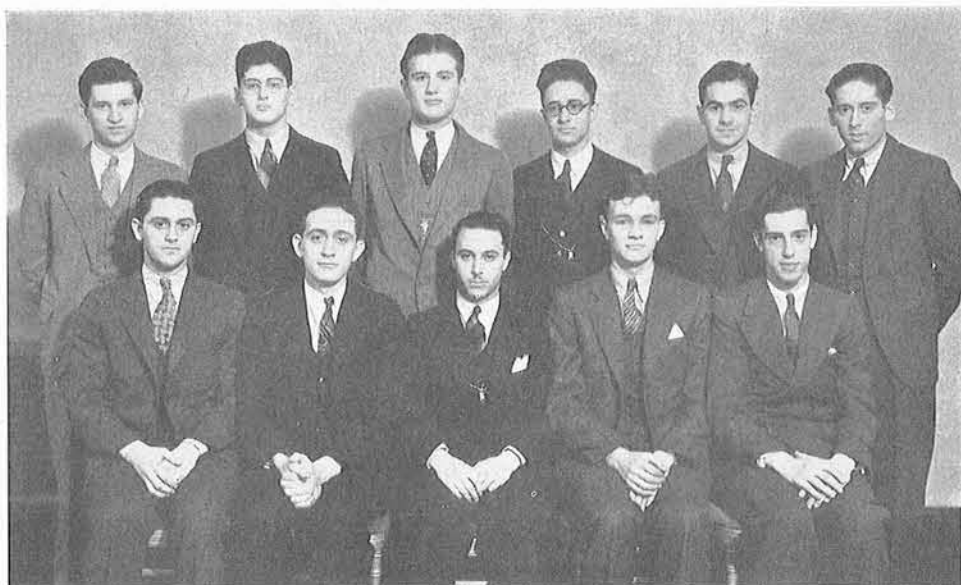
Sanford E. Bennett ..... *President*  
Henry Silver ..... *Secretary*  
Saul Schlesinger ..... *Treasurer*

**Frater in Facultate**

Edward R. Bascom

**Fratres in Universitate**

Sanford Bennett	Benjamin Kohen	Jerome Rothenberg	Saul Schlesinger
Robert Birenbaum	Leon Lewis	Harvey Rothstein	Henry Silver
Joe Gleicher	Harry Okrent	Saul Rubin	Nathaniel Share
Samuel Harvith			Sidney Tickton



Share    Jay    Rothenberg    Tickton    Rubin    Kohen  
Rothstein    Okrent    Bennett    Silver    Birenbaum



Established 1926

**Shahs**  
Local Fraternity

**Officarii**

Walter Hansz ..... *President*  
Fred Stedman ..... *Vice-President*  
George Ewald ..... *Secretary*  
Joseph Groesbeck ..... *Treasurer*

**Frater in Facultate**

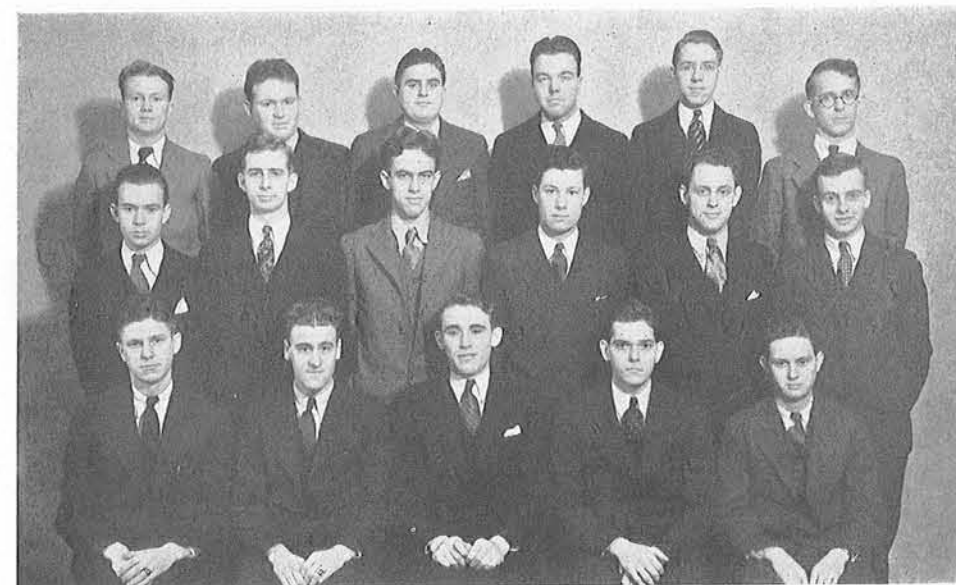
Harold Stewart

**Fratres in Universitate**

Harold Browne	Walter Hansz	Arthur MacFarland	Donald Peirce
Harold Evans	Reg Humphries	George MacFarland	Marcus Schwartz
George Ewald	Elden Jay	John McCullough	Fred Stedman
Charles Ghent	Robert Jones	William Niemetta	Jack Vories
Joseph Groesbeck	Carlton Kammer		Julian Wilson

**Neophytes**

Walter Gurnack	Reid Peirce
Kenneth Lewis	Paul Sorenson



Wilson    Evans    Humphries    Jay    Niemetta    Peirce  
Schwartz    Browne    Kammer    McCullough    Ghent    Jones  
Ewald    Stedman    Hansz    Groesbeck    Vories



**Sphinx**  
Local Fraternity



Established 1918

**Officiarii**

Harry Golder.....Magistrate  
 Burton Smith.....Vice-Magistrate  
 Frank De Shon.....Clerk  
 Wallace Bohn.....Chancellor  
 Frederic Piggins.....Sheriff

**Fratres in Facultate**

C. F. Kuhn Dr. W. V. Sessions

**Fratres in Universitate**

Carl Allman Collin Copeman Harry Golder Burton Smith  
 Wallace Bohn Frank DeShon Frederic Piggins John Wenzel

**Neophytes**

Charles Black Bill Dineen Jerry Mudie  
 Harold Bowie John Jaecques Frank Taugner



Piggins Black Weatherhead Jamieson Taugner  
 DeShon Bohn Golder Sessions Smith

**Alpha Tau Beta**  
Honorary Professional Journalistic Fraternity

Organized at the  
Colleges of the City of Detroit  
1925

**Officiarii**

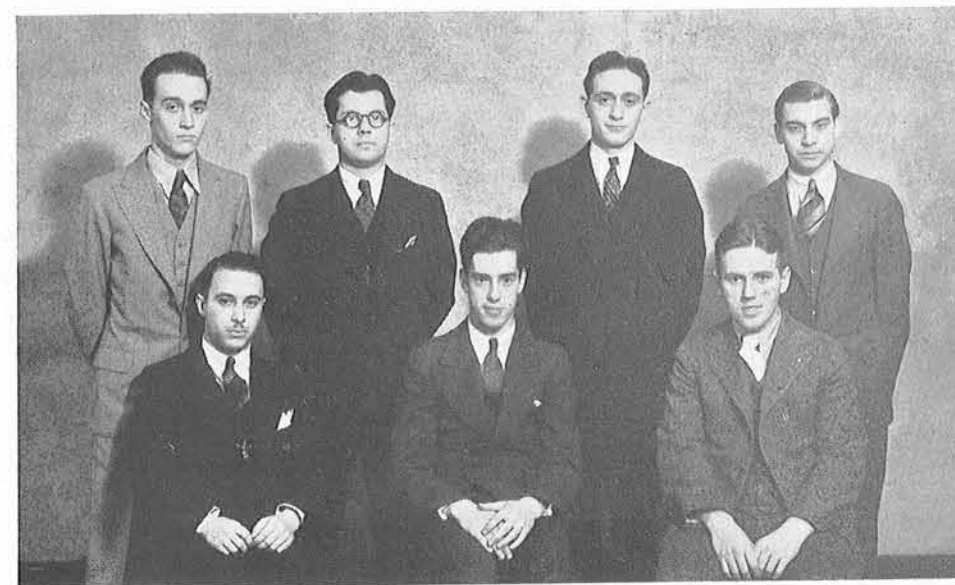
Robert Birenbaum.....President  
 James P. Dunnigan.....Vice-President  
 Stuart Lottier.....Secretary-Treasurer

**Fratres in Universitate**

Stuart Lottier Jim Dunnigan Abe Rosenblatt  
 Charles Reid Art Gloster Wesley Lindow  
 Al Church Sanford Bennett Ed Reinig  
 Paul Lutzeier Joe Steinberg

**Neophytes**

Frank Angelo Harry Okrent Anthony Monterosso  
 Julian Tobias Dick Fredericks William Mouser  
 Waldo Martindale Robert Holiday



Martindale Fredericks Okrent Reid  
 Bennett Birenbaum Dunnigan

### Pi Kappa Delta

#### National Honorary Forensic Fraternity

Michigan Zeta Chapter  
Organized at the  
Colleges of the City of Detroit  
April, 1924

##### Officiarii

Garnet Garrison.....*President*  
Bernice Brennan.....*Vice-President*  
Nedra Smith.....*Recording Secretary*  
Hugh Maloney.....*Secretary-Treasurer*

##### Fratres Honores

Dean Albertus Darnell    R. L. Cortwright    Ex-Governor Alex Groesbeck

##### Fratres in Universitate

Bernice Brennan	Harry Golder	Hugh Maloney
Helen Cartwright	Geraldine Wieman	Glen Massnick
Louis Esterling	Glen Howell	Gerald Rothenberg
Garnet Garrison		Nedra Smith

PI KAPPA DELTA is a national honorary fraternity which recognizes outstanding work in speech. The organization aims to stimulate progress in, and to promote interests of, oratory, debate, and public speaking.



Golder    Cartwright    Wieman    Esterling  
Howell    Brennan    Garrison    Smith    Maloney

### Pi Sigma Alpha

#### National Honorary Political Science Fraternity

Sigma Chapter Organized May, 1931

PI SIGMA ALPHA, national scholastic honorary in the field of Political Science, was founded at the University of Texas in 1919. The Sigma Chapter was installed at the Colleges of the City of Detroit, May 18, 1931. It is the purpose of the fraternity to sponsor and stimulate activity and interest in government and the study thereof, to reward high scholastic achievement in that field, and to promote good fellowship among those who make that field an especial interest.

The major project which Sigma Chapter has undertaken this year is that of sponsoring the Fifth Annual Michigan Inter-collegiate League of Nations Assembly held at the Colleges of the City of Detroit, April 22 and 23, 1932.

##### Officiarii

Alvin Reske.....*President*  
Jeannette Secker.....*Secretary-Treasurer*

##### Fratres in Universitate, Sigma Chapter

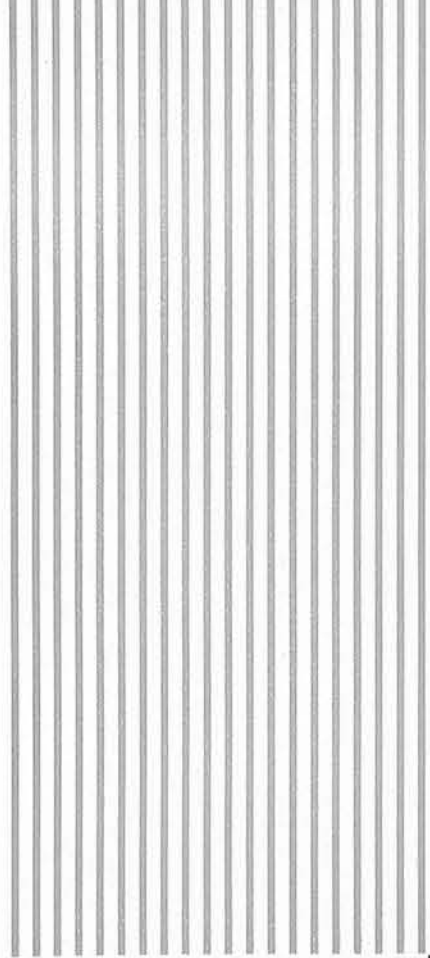
Dr. Jay J. Sherman	Jeannette Secker	Mr. Bryan Rust
Dr. Charles W. Shull	Mr. James Russell	Hugh Thompson
Alvin Reske		Sam Sugar



Jeannette Secker



Alvin Reske



F  
E  
A  
T  
U  
R  
E  
S





# THE DETROIT COLLEGIAN

## OFFERS

1. Detailed accounts of all athletic activities of the colleges.
2. Interesting stories of all social activities of the colleges.
3. Unusual feature stories.
4. Reviews of the latest shows and books.
5. An editor's mail box, open for your discussions of current topics.
6. Editorial discussions of the problems of the colleges.

YOURS FOR THE TAKING

READ

# THE DETROIT COLLEGIAN

EVERY

MONDAY and THURSDAY

## Some People's Children



Joe Zilch



Mrs. Zilch

I never dreamed that this picture would get into the Griffin. Heck, a guy can't help it if he's naturally smooth-looking. This suit belongs to Glass. He takes a half-size larger than I do.

I always knew I was good looking, and this picture shows my winning smile to good advantage. This is my first public appearance. I wore this airy costume because over-ripe fruit and vegetables do stain the clothing so.

Yes, I feel pretty good today. Don't care what happens! That's the way I usually feel, except when somebody bumps me in the nose. Yes, I've knocked about on quite a few of the basketball courts of the country. This is a picture of me while in training.

I hate a guy that throws the bull. I've got an awful pull with the women. I expect to get married some day. I hate a guy that throws the bull. Sometimes I think of quitting school and



Jim Telfer



Bill Rieman



*"Just Across the Avenue"*

THE FINEST PLACE TO LUNCH  
WEBSTER HALL COFFEE SHOP

# HOTEL WEBSTER HALL

*"The only Hotel in Detroit with a Swimming Pool"*

RATES: Transient, \$2.00 and up per Day  
Permanent, \$8.00 and up per Week

GREEN AND  
GOLD COFFEE  
BAR

GRAYSTONE

World's most unique Ballroom  
and Gardens

Home of Jean Goldkette's  
Musical Creations

GOLDKETTE BUILDING  
Terrace 2-8400

going to work, but then I think that the place needs me, and the frat needs me, and I stay. I hate a guy that throws the bull.

Alpha Theta Sigma

This local sorority early attained the title of the Starvation Club. The surest way to reduce is to become an Alpha Theta Sigma. When the victims join, they are padded out like a mattress, but, when they are graduated, their ribs protrude. They believe in getting in the limelight, and, although there are a few notorities in this aggregation, the majority are grazing in the cellar of the Hall of Fame. The most that can be said of this brood is that there seems to be plenty of variety. "Pierpont," the red-headed debutante, is going to Europe to bring back some fatted calves.

Sigma Sigma

The majority of this book-toting crew are too busy with their Lit and French to break windows in the Social Structure, but there are some black sheep in every flock. These gals entered campus activities as a debating organization, but all their efforts now seem to be devoted to throwing the

JOHN ARMSTRONG AND SON

FUNERAL DIRECTORS

PHONE COLUMBIA 0510

5275 Third Avenue  
DETROIT, MICH.

THE INLAND PRESS  
PRINTERS

TELEPHONE CAD. 1102-1103-1104

610-620 Congress St. W.  
DETROIT

animal to conceal their cranial capacities. If it were not for the heroic efforts of the Y. W. C. A., with its free movies to keep the girls in town on Saturday nights, the whole sisterhood would be on the downward path.

Zeta Chi

We now come to the abode of the Z X's, that bunch of cistern with the anti-tearoom atmosphere. This group would have ceased to exist if it were not for the Ruel family, who contributed a delegate. Unfortunately, the organization appears to be in a flourishing condition, and so it is able to disturb the peace of the Green and Gold Coffee Bar. The sister Zetas think nothing of playing basketball with the coffee urn. Not all the Zeta Chi's aspire to be musicians, but all seem to be prominent in some form of community torture.

RANDOLPH 1680-0417-1741

The L. Solomon Fish Co.  
WHOLESALE AND RETAIL

All Kinds of Fresh and Salt Water Fish  
Lobsters, Frog Legs, Clams, Oysters, Shrimps,  
and All Kinds of Seafood

"Try Our Service"

18 Broadway Market  
DETROIT

The Belcrest Hotel

5440 Cass Ave., Detroit  
Columbia 1700

Phone Randolph 8266

Established 1890

F. BRUESSER & CO.  
Masquerade and Theatrical  
COSTUMERS

441 MACOMB ST.  
at Beaubien Detroit, Mich.

Phone Vinewood 2-0656

HENRY J. STAHL  
FUNERAL DIRECTOR

7950 West Fort Street  
DETROIT

L'Ongfellow 8900

Royal Oak 4717

LOCKER'S FLOWERS

Flowers for all Occasions

19816 Woodward Ave.  
WM. T. LOCKER DETROIT

THEODORE J. SMITH  
STUDIOS

Superior Instruction in All Branches of the  
Art of Dancing

Special Classes in Reducing

STUDIO, 474 WEST WARREN AVE.  
TELEPHONE: COLUMBIA 4151

You'll Enjoy Dealing With  
**Detroit's Fastest Growing  
Creamery Company!**

Kennedy courtesy and service—and the outstanding purity and quality of Kennedy products—have resulted in the most remarkable growth in the history of the dairy industry!

And now—Kennedy offers still another important feature—the Hood Seal Cap! This sanitary hood covers the entire pouring lip of every bottle and absolutely protects against contamination or tampering. This extra sanitary feature is provided *without a penny of cost to you.*

Kennedy Kuality Products Include:

- |                      |                        |
|----------------------|------------------------|
| Pasteurized Milk     | Churned Buttermilk     |
| Jersey Milk          | Lactic Acid Buttermilk |
| Golden Guernsey Milk | Coffee Cream           |
| Chocolate Milk       | 40% Whipping Cream     |
| Certified Milk       | *Whipped Cream         |
| Cultured Buttermilk  |                        |

\*Cream already whipped for your convenience.

Kennedy's remarkable growth has been built on quality, courtesy, and service. We are helping to support your magazine by our advertisement. Will you kindly reciprocate by placing your order for Kennedy milk and cream? In so doing, please mention the "Griffin."

**W.J. Kennedy Dairy Co.**

**"AN INSTITUTION DEDICATED TO THE HEALTH OF BABIES AND CHILDREN"**

Telephone Whittier 1810



3935 Seyburn Avenue





**Rheume's Restaurants**

Serving Excellent Food  
at Unusually Low Prices

INSTANT SERVICE

Store Nearest College:

**4825 Woodward Ave.**

Between Hancock and Warren

**Plan to Save and Invest Safely  
IN LIFE INSURANCE**

Our Life Insurance Financial Plan  
was adopted by the Alpha Gamma Sigma  
Fraternity of the Ohio State University

*Let us serve YOU or your Fraternity*

**Gleaner Life Insurance Society**

Woodward at Palmer  
DETROIT, MICHIGAN

The Big Trend Is to

**United States  
Tires**

**Bielfield Tire Company**

5724 CASS AVENUE  
MADISON 3121

**Delta Gamma Chi**

Now we come to a singular collec-  
tion of squirrel food, who dwell apart  
from the common herd, that their  
unseemly racket may not disturb lovers  
of the peace. During the "open sea-  
son" these gals set their smooth traps,  
and many a Frosh who thinks that she  
is wise to the game is knocked out in  
the first round and marked with the  
brand ΔΓΧ, which she is forced to car-  
ry during her four-year snooze.



Here begins slobber and mud sling-  
ing! If any dirt about you is herein  
printed it is because what we had  
wasn't fit to print. After all, wasn't it  
Aristotle who said, "Rosta beef,  
chockle pudding, stromberry pie,"  
which in the language of our four  
fathers means—"probable northeast  
winds and fairer Tuesday, heh! heh!"

Compliments

of

**LARRY S. DAVIDOW**



The well dressed  
ham is wearing a  
lot of things this  
year, including  
shoes and socks.  
The shoes illustrat-  
ed herewith are the  
nobby Rajahs  
which are absolute-  
ly guaranteed to  
ruin your feet in  
three days. They  
are, of course, second or even third-  
hand, for to wear new shoes is, oh,  
shall I say, declasee—or declasee!



Ah! At last, gen-  
tle reader, you may  
wind the cat and  
put out the clock,  
for you see here  
that the bottle is  
empty and the cur-  
tain must go down,  
pardon me—I mean  
curtain.

For after all,  
wasn't it the great  
psychologist, Freud,  
or was it our Editor-in-Chief, who  
said:

"Life is but a bowl of grapenuts."  
Goodbye. (Who said "Thank God?")

**FRANK W. KERR CO.**

*"The World's Chemical  
Resources at Your Door"*

Chemicals for All Industrial and Scientific  
Purposes

Laboratory Supplies and Equipment  
for Bacteriologists, Chemists  
and Manufacturers

422 W. CONGRESS  
CADILLAC 4241

Compliments of

**READING  
Credit Clothing Co.**

**HIGH-GRADE CLOTHING**

*For the Entire Family*

308-316 MICHIGAN AVENUE

Cadillac 3748

Detroit, Mich.

**The RANDOLPH PRESS  
PRINTERS**

KROLIK BUILDING

316 E. JEFFERSON AVE.

CADILLAC 8168

DEMAND IT OF YOUR DEALER

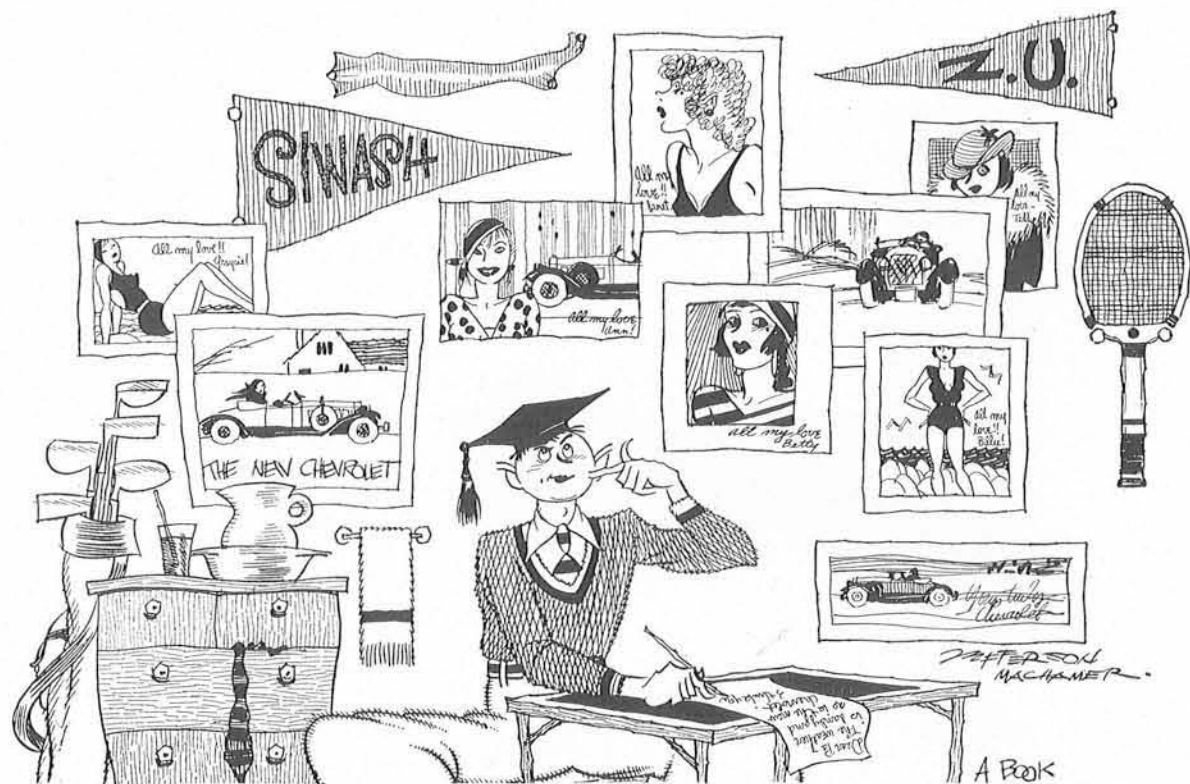


**ALASKA ICE CREAM**

*Served Wherever Quality Counts*

**THE STROH PRODUCTS CO.**

CADILLAC 5840



## Seniors—Pass Out in Style!

THOUSANDS of seniors (well, several anyway) have asked us how to be sure of getting a Chevrolet Six for graduation. Suggestions spring from our typewriter like moths from summer flannels.

Work the word Chevrolet into all your letters home—and write often. Intimate that too much walking is giving you a permanent Charley horse. Have the car sent to your home on approval, disguised as a set of the Harvard Classics. Or even—and this idea is practically infallible—ask for one point-blank.

It really isn't much to ask for, you know, from a purely mercenary standpoint. Chevrolet prices are among the lowest at which any car sells. And *upkeep*—well, we're

certainly glad you asked about *that*, for Chevrolet's upkeep economy is *positively unexcelled!* But, for all that, the new Chevrolet Six is just about the smartest thing on wheels, and possesses all the speed and power you've wanted for, lo, these many years. What's more, the combination of Syncro-Mesh gear-shifting and Free Wheeling makes for thrilling new driving ease.

Right now, when you are actually about to fulfill the hopes of your fond parents, is a splendid time to broach this subject. If you doubt your oratorical powers, pour out your heart in a letter. After all, you might as well get *some* good from all those rhetoric courses.

Priced as low as \$445, f. o. b. Flint, Michigan. Special equipment extra. Low delivered prices and easy G. M. A. C. terms. Chevrolet Motor Company, Detroit, Michigan, Division of General Motors

## NEW CHEVROLET SIX

*The Great American Value*



**MILLER & REICHLER**

35 EAST GRAND RIVER AVE.  
62 UNIVERSITY BLDG.

Jewelers to:

A ⊕ Σ	AX
A Δ Ψ	A Σ X
SPHINX	Δ Σ
SHAHS	MACKENZIE,
GAS HOUSE GANG	Honor Key

Why not let us quote prices on your  
fraternity or sorority pins  
and rings?

**B**EAUTIFUL one to four-room  
housekeeping apartments, furnished or  
unfurnished. Try our Coffee Shop—  
famous for \$1.00 dinner.

For your afternoon party, dinner or  
dance, beautiful private dining rooms  
and ballroom are available. Phone  
Madison 9500 for menus and prices.

*The Wardell*  
15 KIRBY, EAST - AT WOODWARD  
"The best home address in Detroit"

M. V. MacKINNON, Manager •

**THE INN**

at the  
**FOX AND HOUNDS**

Bloomfield Hills

Telephone Birmingham 2026

Here ladies and gents, you see the  
living proof of the evils of drink.



What this fraternity needs is a couple  
more half barrels for they seem to  
have enjoyed the last gallon of kero-  
sine—in fact they did enjoy it. Are  
we going to let them keep up this  
drinking? No! Let's all go to the  
next party and drink too. So there!

Ah, ha! The latest reports say that  
a group of well known actresses ar-  
rived later. Tsk! Tsk! Toni!

**John W. Masury & Son**

QUALITY PAINTS

Varnishes, Enamels, Colors and Lacquers

524 STATE ST.  
DETROIT

**DINE AND DANCE**

**BURGER'S INN**

Dancing with Orchestra Every Night

25671 Gratiot Ave.

Between 10 and 11 Mile Rds.

PHONE ROSEVILLE 535



Gentle readers—  
is your patience  
exhausted? Then  
gaze upon these  
two daughters of  
the corn-swept  
fields of the col-  
lege campus. The  
blanket is an heir-  
loom that this girl

got from the Patches—the Patches—  
the Patches is an Indian tribe, now ex-  
tinct (the gag is up—they went back  
to college). The sun-burned maiden  
with the tree in her mouth is the sister  
of Elmer Zilch, who is third cousin to  
Adolphus Gabbons. The contest is  
open—who is she? Why, you darn  
fool, she's the sister of Elmer Zilch.



USED BY  
COLLEGES OF THE  
CITY OF DETROIT

**VISIBLE RECORDS EQUIPMENT CO.**  
Originators of Visible Loose Leaf  
1500 CADILLAC SQUARE BLDG.  
Phone Cadillac 8290 DETROIT, MICH.

**AGENCY SERVICE**

**ANDREW C. GILBERT**

State Agent

Representing

London and Lancashire Insurance Co.  
Orient Insurance Company  
Law Union and Rock Insurance Co.  
Safeguard Insurance Company  
Standard Marine Insurance Co.

1822 Ford Building  
DETROIT, MICH.

AGENCY ACCOUNTS SOLICITED  
EXCEPTIONAL SERVICE

Call Cadillac 5491-5492

**WARDELL**

**FLOWER SHOP, INC.**

5400 Woodward at Kirby

Phone Mad. 5231—9500

ARTISTIC WORK . . .

. . . MODERATELY PRICED

**THE GARDENIA FLORIST**

(We Sold 800 Gardenias in One Week)

There's a Reason!

Branch: 8200 Woodward at Marston



Phones: Columbia 4495  
Terrace 2-5577

We Deliver

**FIRESTONE DRUG CO.**  
*Pharmacists*

Prescriptions Scientifically Compounded  
Fountain Luncheonette — Rapid Service  
Come here between Classes  
5001 WOODWARD AVE.  
Cor. Warren  
DETROIT

Call Us For  
ARTIST'S MATERIALS  
SIGN WRITER'S SUPPLIES  
FRESCO MATERIALS  
PAINTER'S SUPPLIES

**SHINN'S**  
WALLPAPER AND PAINTS  
4550-56 Grand River Ave.  
GLENDALE 7938-7939

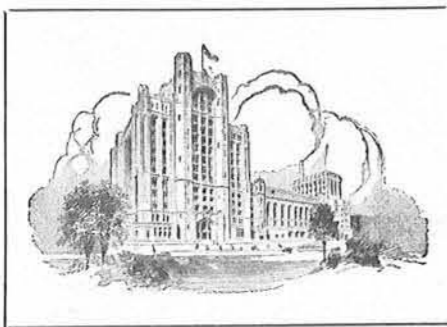
Far up in the Northland there stands  
a rock. It is fifty miles high and a  
thousand miles broad, but, since that



has nothing to do with this at all, we  
might just as well leave it out.

We must face the facts—where are  
the people in this picture? Nobody  
cares excepting everyone who reads  
this book, so we may as well leave that  
out too.

**LARGE and SMALL BALLROOMS**



*for all*  
School, Sorority and Fraternity  
Dinners and Dances

Delightful Parlors for  
Bridge Parties and Teas

Auditoriums for  
Concerts and Theatricals

*When planning your next Social Function phone for our  
prices—Temple 17600*

**The MASONIC TEMPLE**

TEMPLE AVENUE at SECOND BOULEVARD



*Compliments*

## Patrons

Ritz Inn  
Ker Printing Co.  
Jas. Seraph & Co.  
Reliable Linen Service  
Phinney's Pies  
Woodward Tire Co.  
Graham-Paige Motor Co.  
Hudson Cleaners  
Cadillac Billiard Parlors  
Norton Grinding Co.  
Fox Restaurant  
Wright, Kay & Co.  
George Seelman & Sons Co.  
E. R. Moore & Co.

## GRADUATES

*For 40 Years*

**HAVE CHOSEN  
WEYHING BROS.**

*Class Rings and Pins*

One graduating class recommends to another and thus the circle grows, until High Schools and Colleges as well as Fraternal Societies all over Michigan have chosen Weyhing Brothers for their Jewelry.

Weyhing Brothers' years of experience is reflected in the style and expert craftsmanship of every piece of Jewelry they manufacture, repair or remodel.

●  
**WEYHING BROS.**  
Manufacturing Co. JEWELERS  
Main Office & Salesroom 304 Eaton Tower    East Side Office & Factory  
Gratiot at McDougall

*from . . .*

*Infancy to Old Age*

Your Portrait Photography Is Best  
When Produced by

**BENJAMIN H. CRAINE STUDIOS**

28 ADAMS AVENUE WEST

*Cherry 4030*

# Detroit Commercial College

Entrance Requirement  
HIGH SCHOOL OR COLLEGE GRADUATION

BUSINESS ADMINISTRATION  
ACCOUNTING  
SECRETARIAL SCIENCE  
COURT REPORTING  
Summer School  
for College Students

Fall Semester, 30th Year  
September 6, 1932

R. J. MACLEAN, President  
Woodward Avenue, at Clifford  
Office Entrance, 19 Clifford

WALTER E. SHAUGHNESSEY

3134 East Fort St.

Wholesale Butter  
and Eggs

TELEPHONE FITZROY 2128

## Cass-Warren Drug

"On the Campus"

LUNCHES AND FOUNTAIN SERVICE

DAY AND NIGHT

"Yeah! What the hell is the idea of going out and getting drunk dad—you



know damn well we haven't paid for the ice box."

Editor's note:

Iceman No. 86.

Telephone No. Hamilton 43921.

Tall, blond, parts his hair in the middle, and walks with a gate—not only a gate, but with silverware or anything he can lay his hands on.

## NOON DAY LUNCHES!

Served Hot or Cold. Dainty Sandwiches and Tea. Just a home-like spot.

## DeLuxe Sweet Shop

5015 WOODWARD

Established 1920

4 Doors N. of Warren





Autographs

A. H. PETERS

Funeral Director

12057 GRATIOT

PINGREE 2161

Day or Night

COLLEGE DAZE

The Poem that made  
Edwin Markham turn gray

Bowed by the weight of books, he leans  
Upon his girl and gazes on the ground,  
The emptiness of ages in his face,  
And on his back a burlap sack.  
Who made him dead to "Chem" and  
"Calculus"

A thing that grieves not and that never  
hopes—  
Stolid and stunned, a brother to a frat?  
Who loosened and let down this brutal  
jaw?  
Whose was the hand that slanted back  
his hair? (ah, ha!)  
What familiar breath is this that  
blows?

MRS. HAWKINS

Terrace C9:94

LA CASA LOMA

5435 Woodward Avenue

Catering to Fraternity and Sorority Parties

Luncheons and Dinners  
Daily and Sunday

Bridge Parties  
Afternoon Teas  
Lawn Service

DR. A. H. JORDAN

Optometrist



Scientific and thorough examination.  
Specializing in muscle building of  
students' and children's eyes.

634 W. Hancock  
near Second

Columbia  
4220

DETROIT

BUS SERVICE  
EVERYWHERE

Low Fares To All Vacation  
Spots

FREQUENT SCHEDULES  
or  
Charter a Bus for Any Occasion



Greyhound Lines

TULLER HOTEL DEPOT

Laf. 3420



## SHE WEARS A SQUARE CUT DIAMOND

Not simply because it is the modern thing to do, but because she feels it more accurately expresses the age . . . she is eager for new beauty. Her sleek motor car is a masterpiece of automotive engineering, not because she is reluctant to appear old-fashioned but because she finds its streamlined luxury more effective . . . she responds to the quickened tempo. And by such things we know her, this young modern,

for she expresses her own age and not her grandmother's. The result is impressive.

We who deal with designing books can well assume that the same successful results would follow the same sincerity of thought. In designing books we must primarily consider the accuracy with which they reflect the age. They should be modern in the strictest sense of the word. If they are less than modern, they are, at best, imitative.

Today's book must mirror today's spirit. It must have a new beauty . . . a quickened tempo.

For some, such an objective presents unsurmountable difficulties. There are others who find such an objective more interesting than difficult. To be sure, it is easier to continue producing books distinguishable from their predecessors only by the date of their copyrights, easier, yes, but terribly tiresome, we think.

THE SERVICE ENGRAVING COMPANY IN DETROIT  
CREATORS OF THE BOOK OF TOMORROW

Compliments  
of  
**HARRIS RESTAURANT**  
Cabin Eat Shops

Warren and Woodward

### College Daze (Cont'd)

Is this the Thing College made and gave  
To have dominion over sea and land;  
To trace the sororities and search the moon,  
To feel the passion of Eternity?  
Slave of the wheel of labor, what to him  
Are Plato and the Student Council?  
Time's tragedy is in that aching stoop  
Plundered, profound, and disinherited;  
Cries protest to the last roll of seven,  
A protest that is class prophesy.

### ONE SMALL SHOP

Can Groom You Better  
Than A Million Large Shops

TRY OUR SERVICE  
You Will Appreciate the Special Attention  
LAUNDRY—SHOE REPAIR  
—HAT CLEANING—

Main Library Hat Cleaning and  
Shoe Shine Shop

For 12 Years a Collegiate Shop  
11 WEST WARREN AVE.

**DAVE LARSEN**  
Sporting Goods Co.

GOLF - FISHING  
TENNIS - CAMPING  
ATHLETIC SUPPLIES

7459 Grand River Garfield 4350

Compliments of  
**Rodgers Dutch Mill**  
Inc.

8½ Mile Rd. and Woodward

Detroit's most  
unique eating place. The  
gathering place of City  
College students.

## WHITE TOWER

*for Good Things  
to Eat*

A Delicious Hamburger  
**5 cents**

"BUY A BAGFUL"

### College Daze (Cont'd)

O instructors, doctors, and professors  
in all lands,  
Is this the thing you give to Charity,  
This homo sapiens, beer-quenched and  
thirsty?  
How will he ever straighten up his  
stagger?  
How will he ever straighten accounts  
with Joe?  
—When this college boy shall rise to  
judge women  
After the silence of his diploma

## IRA WILSON & SONS DAIRY

*Owners and Operators*



**PYRAMID OF QUALITY**

34,000 children drink our milk  
daily in the schools . . . But old, as well as young, like  
the taste of Wilson's Milk . . . .  
and drink it because they like it.



**PYRAMID OF QUALITY**

WALNUT 5340

5255 TILLMAN AVENUE

## "... Builders of School and College Publications"

THAT phrase describes the  
activities of Heitman-Garand Company.

It means that each year there is great  
co-ordinated effort toward creating  
even finer school publications.

It means that the School Staff may  
anticipate and realize sure, dependable  
"first aid" . . . and "last aid", too . . .  
in the building of a satisfactory annual.

The assistance Heitman-Garand are  
prepared to offer is not readily obtain-  
able from every printer.

Fertile years devoted to gaining experi-  
ence and training in building school  
annuals are of the necessary requisites be-  
fore genuine assistance can be assured.

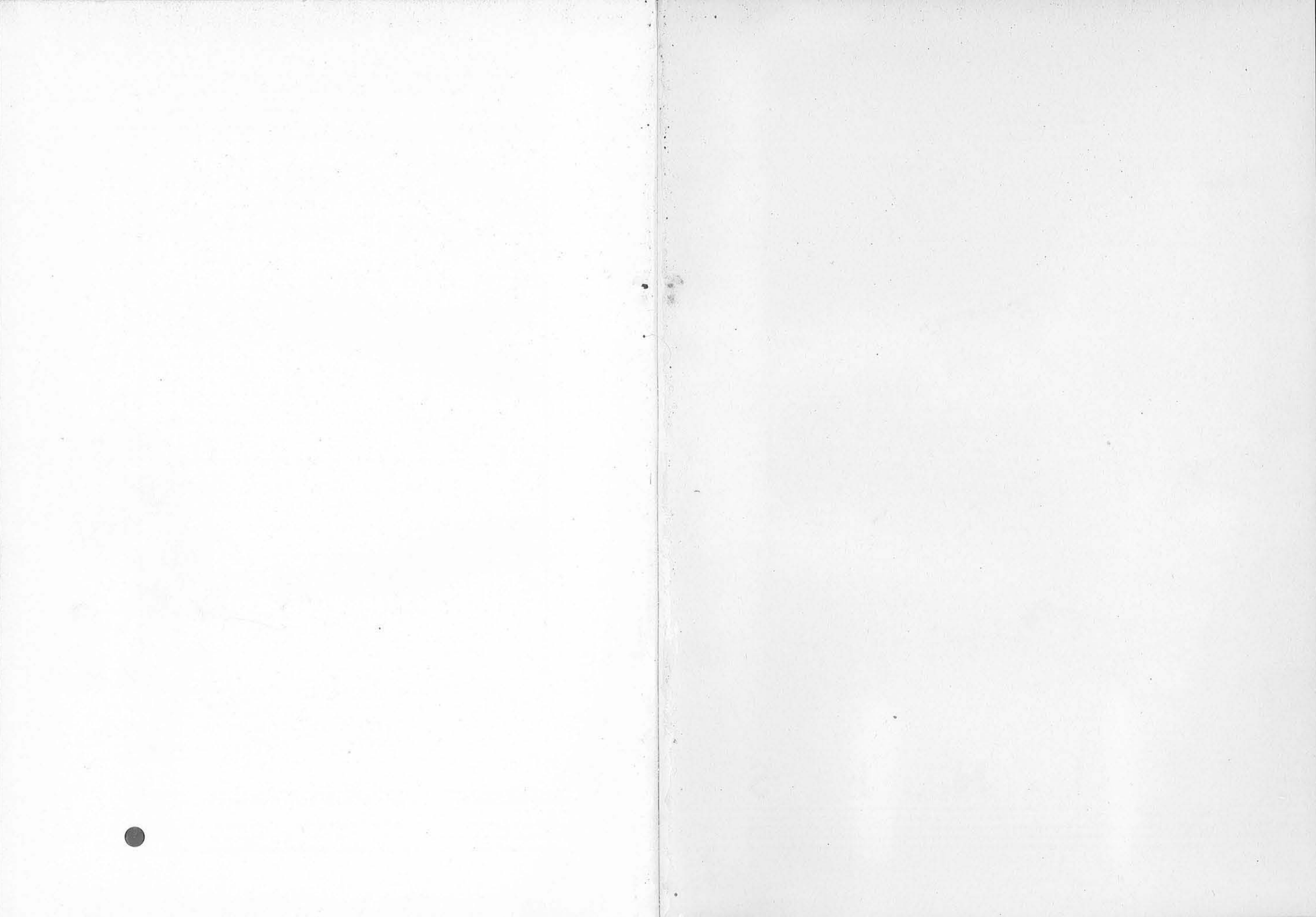
» » »

## HEITMAN-GARAND COMPANY

. . . BUILDERS OF .  
SCHOOL and COLLEGE  
PUBLICATIONS

234 WEST LARNED STREET  
DETROIT, MICHIGAN  
Telephone Randolph 3258







F I N I S .