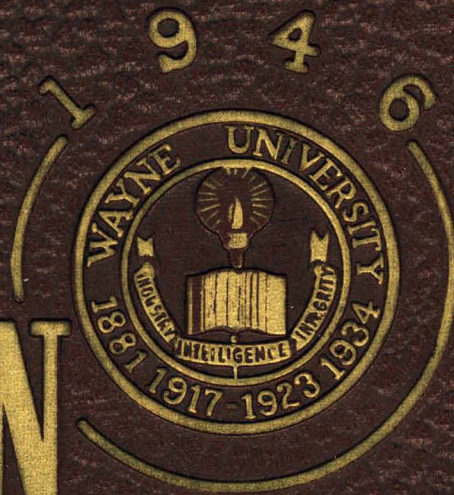
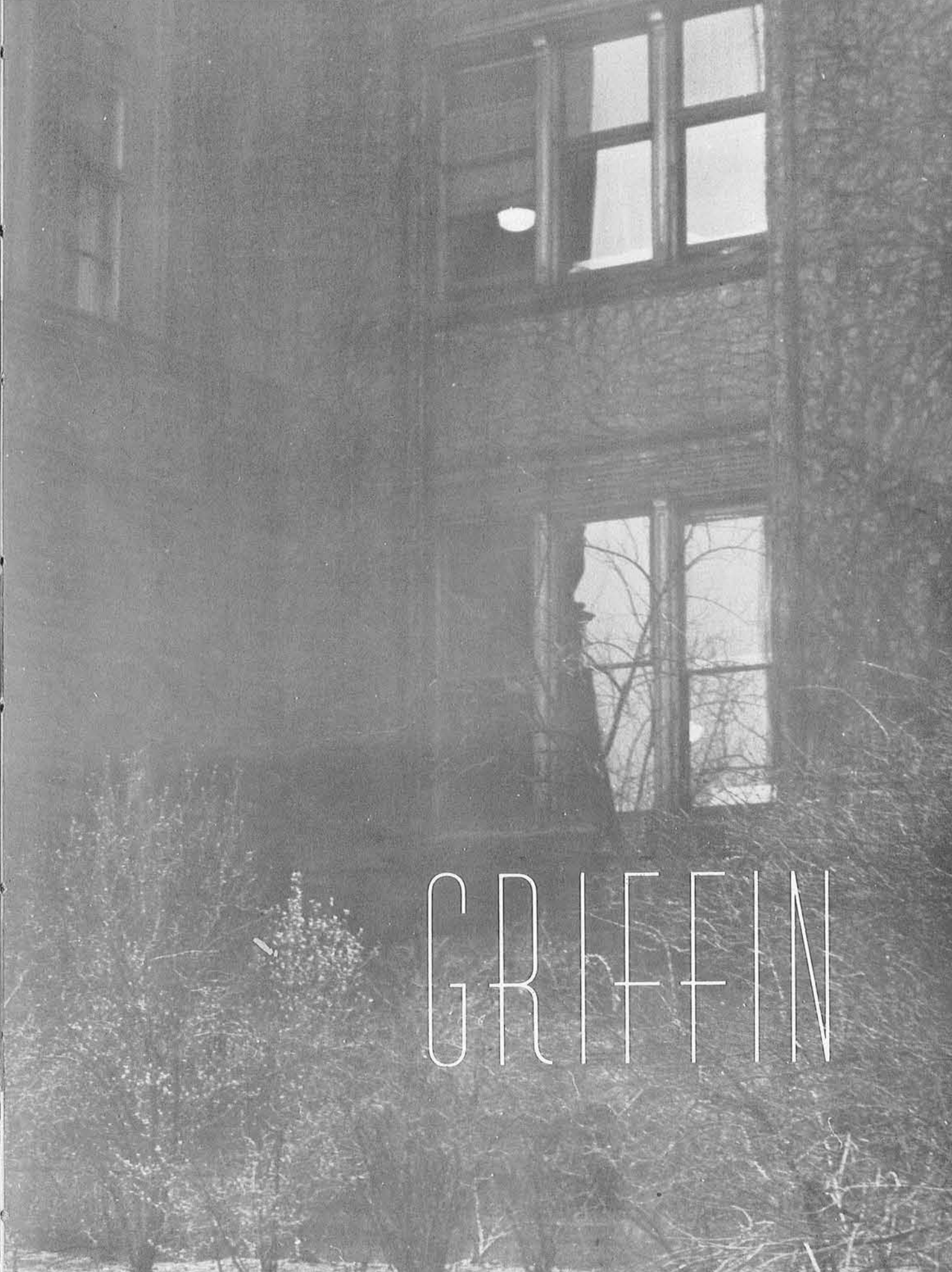
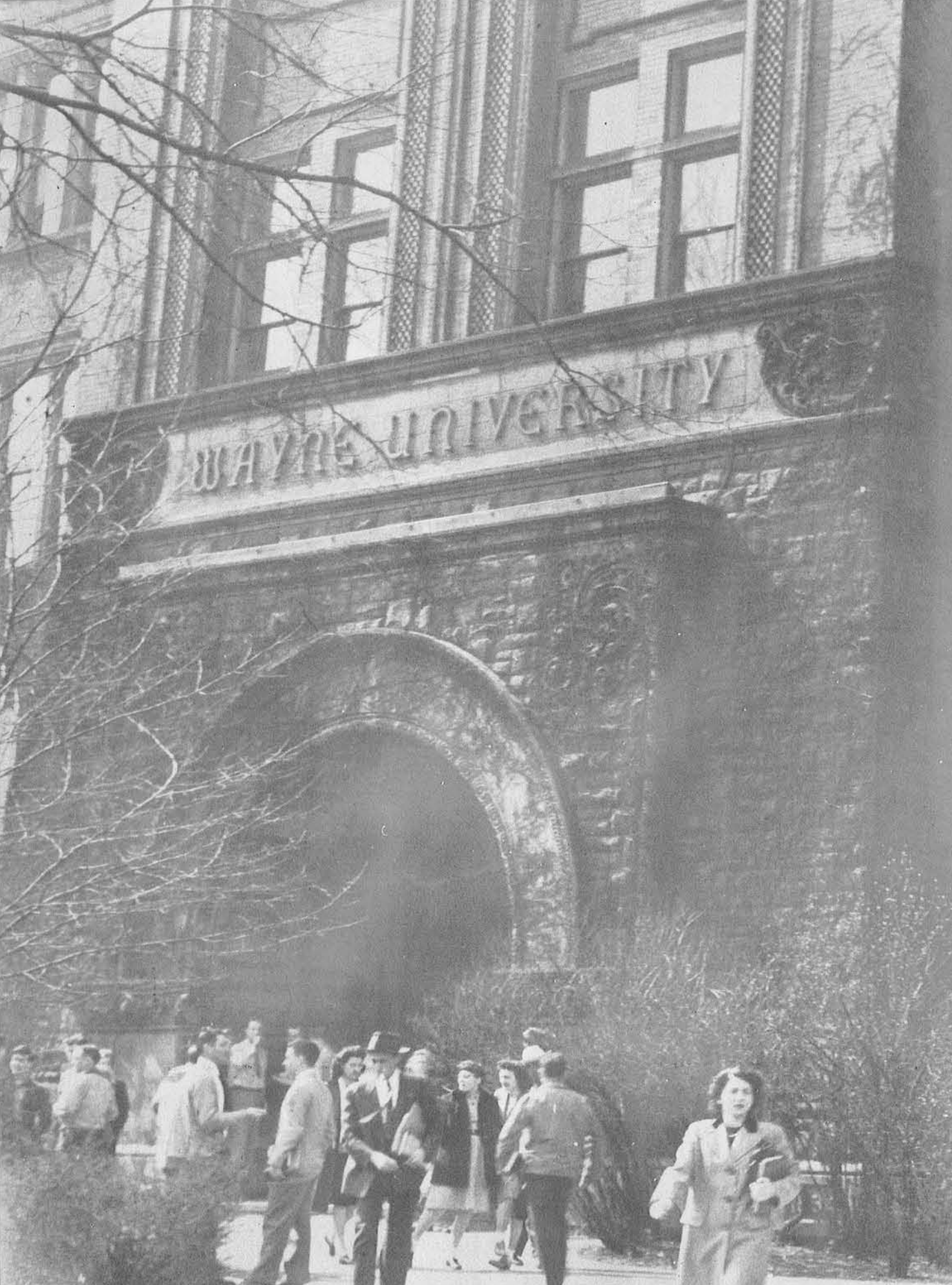


1946
WAYNE UNIVERSITY
1881 1917-1923 1934
WISDOM INTELLIGENCE LIBERTY
GRIFFIN





1946



GRIFFIN



ADMINISTRATION
SENIORS
ACTIVITIES
ORGANIZATIONS
ATHLETICS
FEATURES

CONTENTS



We dedicate the Griffin of 1946 to our returning veterans, and we extend to them a sincere welcome as they fill their long-vacant places in the academic and activity programs of the University.



ADMINISTRATION

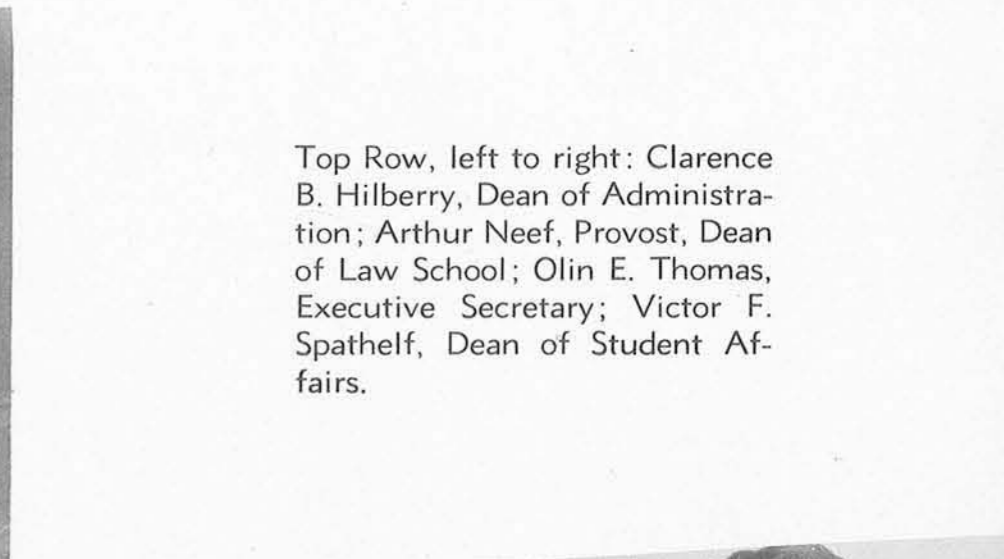
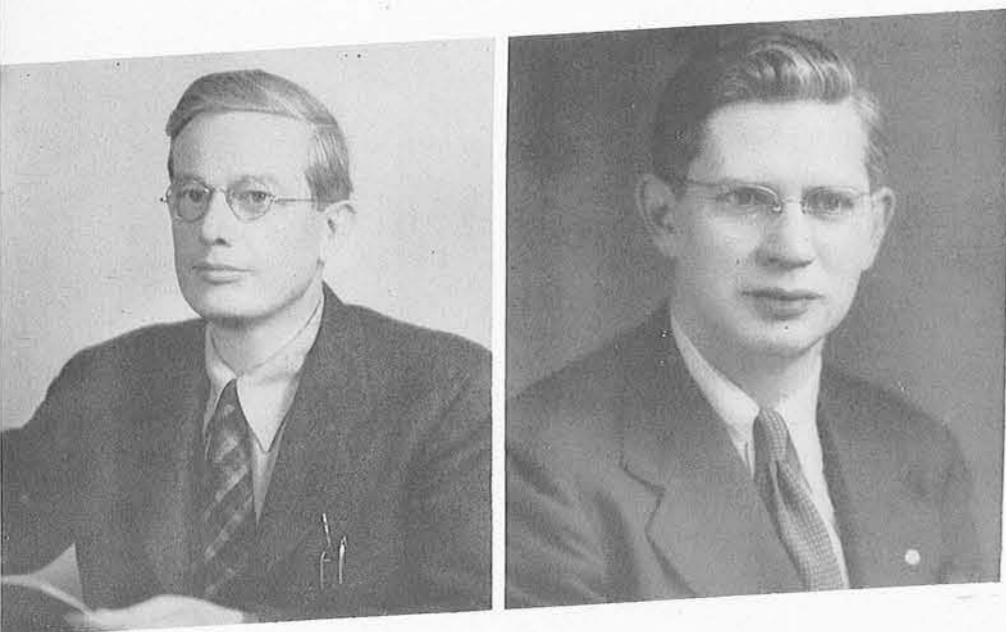
DR. DAVID D. HENRY
President of Wayne University



To the citizens of Michigan he is Dr. Henry, to the University staff, the "Chief", and to the students, "Prexy". Devoted as he is to the welfare and development of the University, Wayne is no less devoted to him. We salute him as a friend, an administrator, and a leader in the cultural progress of the state.

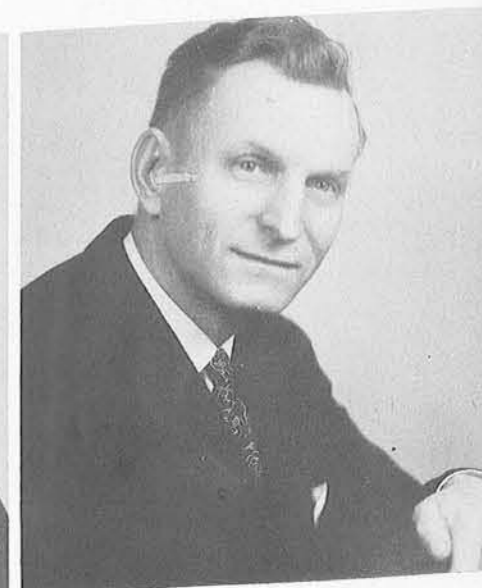
DEANS AND

DIRECTORS



Top Row, left to right: Clarence B. Hilberry, Dean of Administration; Arthur Neef, Provost, Dean of Law School; Olin E. Thomas, Executive Secretary; Victor F. Spathelf, Dean of Student Affairs.

Bottom Row, left to right: Waldo E. Lessenger, Dean, College of Education; Robert M. Magee, Assistant Dean, College of Education; Arthur Carr, Dean, College of Engineering; John J. Lee, Dean, Graduate School.



DEANS AND

DIRECTORS

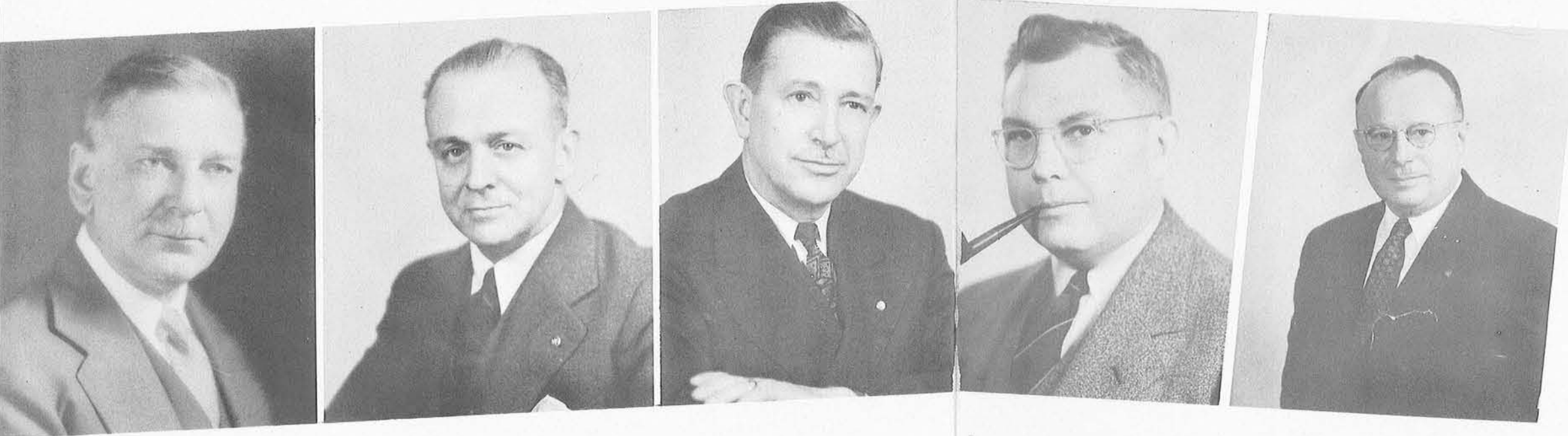


Top Row, left to right: Victor A. Rapport, Dean, College of Liberal Arts; Don S. Miller, Associate Dean, College of Liberal Arts; Henry H. Pixley, Assistant Dean, College of Liberal Arts; Hardy A. Kemp, Dean, College of Medicine.

Bottom Row, left to right: William J. Stapleton, Associate Dean, College of Medicine; Katherine Faville, Dean, College of Nursing; Raymond Hussey, Dean, College of Occupational Health; Roland T. Lakey, Dean, College of Pharmacy.



DEANS AND DIRECTORS



Left to right: Lent D. Upson, Dean School of Public Affairs and Social Work; Gordon W. Kingsbury, Director of Financial Aids, and Secretary, Wayne University Foundation; Alfred C. Lamb, Director, Division of Buildings and Grounds.

Left to right: G. Flint Purdy, University Librarian; Wendell Vreeland, Director, Division of Research and Publications.



First row, left to right: Virginia Brodel, Placement; Doris A. Cline, Testing; Keith Hollingsworth, Admissions; Helen Horn, Women's Activities Assistant.

Second row: Gordon Klopf, Men's Activities Assistant; Don S. Palmer, Veterans' Affairs; Elizabeth A. Platt, Registration; Joseph P. Selden, Religious Activities.



DIVISION OF STUDENT PERSONNEL

Bottom Row, left to right: Howard F. Shout, Publications; Margaret Ruth Smith, Student Activities; Homer D. Strong, Alumni Affairs.



FEATURING THE FACULTY



DR. HENRY MAKES A POINT





... AND MORE

FACULTY



SENIORS

ADAMS, RUTH
ANDERSON, ELEANOR

ABLER, PHYLLIS
ALBRIGHT, BETTY

ALAN, IRMA
ANDREW, JEAN

BLACKARD, MAE
BOGALIA, MARY

BLACKWELL, LEONARD
BOWMAN, RUTH

BLOCK, FRANCES
BRENNAN, NETA

BLUCK, MARCIA
BRETT, MARY

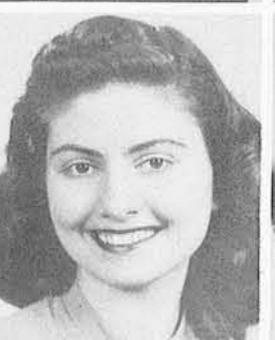
BLUMENTHAL, LEONORE
BROWN, BETTY



Top, row one: **Abler, Phyllis M.**, Education, B.S., A.W.S., Pres., Sigma Sigma, V. Pres., Who's Who. **Adams, Ruth A.**, Liberal Arts, B. S., Sigma Iota, V. Pres., Phi Upsilon Omicron, Editor, Home Ec. Club, Pres. **Alan, Irma J.**, Liberal Arts, B.A., R. 2. **Albright Betty**, Education, B.S., Pi Gamma. **Anderson Eleanor**, Pharmacy, B.S., Xi Omicron, Student Council, Wayne Pharmic, Senior Rep. **Andrew, Jean E.**, Liberal Arts, B.S., Sigma Sigma, Wayneminster, Pres., A.W.S. Exec. Bd.
Bottom, row one: **Avison, Mae**, Education, B.S., Social Studies Club, V. Pres., **Ballbach, Ray**, Liberal Arts., B.S., Gamma Delta, Treas., American Chem. Soc., Pres. **Barnes, Margaret Ann**, Education, B.S., W.A.A., Health Ed. Major Club, Sigma Rho Chi. **Baruch, Leonard P.**, Education, B.S., M. U. Bd. of Governors, Pres., Who's Who, Student Council. **Batsford, Joyce**, Liberal Arts, B.S., Merchandising Club, Pres., I.S.C., Zeta Chi. R. 2; **Baxter, Andrene**, Education, B.A. **Beatty, Hazel**, Education, B.S. **Bellfy, Neil J.**, Engineering, B.S., Sigma Rho Tau, Epsilon Sigma, Engineering Soc. **Bernstein, Mildred**, Liberal Arts, B.A., Iota Alpha Pi, Alpha Kappa Delta. **Blacha, Emily**, Education, B.S., Alpha Neo, A.W.S. Pen and Brush, Chrm., Art Ed. Club, Sec'y.

Top, row one: **Blackard, Mae K.**, Liberal Arts, B.A., Collegian, Mng. Ed., Pi Delta Epsilon, Sigma Sigma. **Blackwell, Leonard H.**, Pharmacy, B.S., M.U. Bd. of of Governors, Pharm. Rep. **Block, Frances**, Liberal Arts, B.S., Alpha Theta Sigma. **Bluck, Marcia**, Education, B.S., Zeta Chi, Social Studies Club, Treas., A.W.S. Exec Bd. **Blumenthal, Leonore**, Liberal Arts, B.A. R. 2, **Bogolia, Mary U.**, Education, B.A., Later Elem. Club. **Bowman, Ruth**, Education, B.A., Pi Kappa Sigma. **Brennan, Neta M.**, Liberal Arts, B.S. **Brett, Mary V.**, Liberal Arts, B.A., N.A.A.C.P., Pres., Alpha Kappa Delta, Junior Dance Group. **Brown, Betty N.**, Education, B.A., Pi Kappa Sigma.

Bottom, row one: **Brunette, Laura**, Education, B.A., Theta Kappa Sigma, Sec'y. **Buckley, Myrtle W.**, Liberal Arts, B.S. **Bytzko, Anne**, Education, B.A. **Campbell, Rose C.**, Education, B.S., Delta Sigma Theta, Treas. **Cannau, Flora L.**, Education, B.A., A.C.E. R. 2, **Canon, Charles**, Education, B.S., Art Ed. Club, Pi Tau Sigma. **Carter, Martha L.**, Education, B.S., W.A.A., Health Ed. Club. **Castelli, Albert L.**, Education, B.S., Concert Band, Symphony Orch., Men's Glee Club. **Charatis, Mary**, Education, B.A., Sigma Epsilon Phi, Sec'y. **Chargot, Henriette**, Liberal Arts, B.A., Zeta Chi, A.W.S. Exec. Bd., Collegian.



26 AVISON, MAE
BAXTER, ANDRENE

BALLBACH, RAY
BEATTY, HAZEL

BARNES, MARGARET
BELLFY, NEIL

BARUCH, LEONARD
BERNSTEIN, MILDRED

BATSFORD, JOYCE
BLACHA, EMILY

BRUNETTE, LAURA
CANON, CHARLES

BUCKLEY, MYRTLE
CARTER, MARTHA

BYTZKO, ANNE
CASTELLI, ALBERT

CAMPBELL, ROSE
CHARATIS, MARY

CANNAU, FLORA
CHARGOT, HENRIETTE

CLARKE, HARRIET
COHEN, ADELINE

CLEAGE, GERALDINE
COHEN, ESTHER

CLEMENTS, FORREST
COHEN, MAY

CLOUD, PAULINE
COMSTOCK, DOROTHY

COFFMAN, ALBERT
COOPER, HENRIETTA

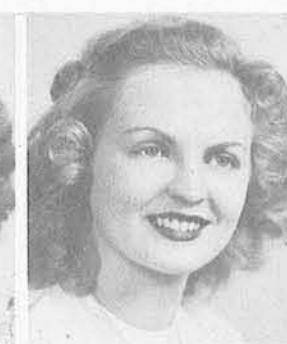
DEAN, EULA
DEUTSCH, WANDA

DEAN, MARGARET
DEWANDELER, EUGENE

DEBELAK, MARY
DIXON, MARY

DEICHMAN, SHEILA
DODSON, VIRGINIA

DENNY, EILEEN
DOMBROWSKI, ELEANORE

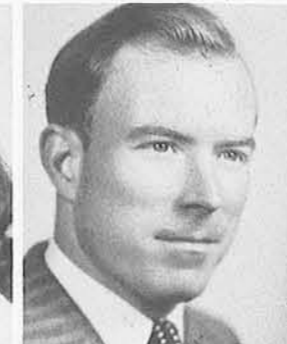


Top, row one: **Clarke, Harriet A.**, Liberal Arts, B.A., Alpha Theta Sigma. **Cleage, Geraldine**, Education, B.S., Alpha Kappa Alpha, V-Pres. **Clements, Forrest G.**, Engineering, B.S. **Cloud, Pauline M.**, Education, B.A., A.C.E., Messiah, El Circulo Espanol. **Coffman, Albert**, Liberal Arts, B. A. R. 2, **Cohen, Adeline S.**, Education, B.S. **Cohen, Esther, L.**, Education, B.S., Senior Bd. **Cohen, May**, Education, B.A., Sigma Theta Delta, A.W.S. Exec. Bd, S.W.E.C. **Comstock, Dorothy**, Liberal Arts, B.A., Student Council, Pres., Who's Who, Wintermart Chrm., '44. **Cooper, Henrietta**, Liberal Arts, B.A., **Collegian**, Night Ed., Pi Epsilon, Pres.

Bottom, row one: **Cort, Nina M.**, Liberal Arts, B.A. **Cox, Erma B.**, Liberal Arts, B.S., Home Ec. Club. **Crockett, David M.**, Liberal Arts, B.S., Alpha Kappa Pi, Varsity Baseball. **Cruz, Pedro C.**, Liberal Arts, B.A., El Circulo Espanol. **Dachoff, Dacho**, Education, B.S., M.U. Bd. of Governors, V. Pres., Who's Who, Tower Guard, Treas. R. 2, **Dante, Ruth**, Education, B.S. **Darling, Mary Ellen**, Education, B.S., A.W.S., V. Pres., Delta Gamma Chi, Who's Who. **Darr, Blossom**, Liberal Arts, B.F.A., Zeta Chi. **Davies, Isabel**, Education, B.A. Delta Gamma Chi. **Day, Robert**, Liberal Arts, B.S.

Top, row one: **Dean, Eula G.**, Education, B. S., Y. W. C. A., Later Elem. Club. **Dean, Margaret Z.**, Liberal Arts, B. A., Broadcasting Guild. **Debelak, Mary**, Liberal Arts, B. A. **Deichman, Sheila**, Liberal Arts, B. A. **Denny, Eileen C.**, Education, B. A., Pi Kappa Sigma, Broadcasting Guild, Y. W. C. A. Row two: **Deutsch, Wanda**, Liberal Arts, B. S., Student Council Assembly Comm., Chrm., Sigma Sigma, V. Pres., A. W. S., Rec. Sec'y. **Dewandeler, Eugene**, Education, B. A., Social Studies Club, Pres. **Dixon, Mary E.**, Liberal Arts, B. A., Math Club, Y. W. C. A. **Dodson, Virginia**, Liberal Arts, B. A., Wayne Christian Fellowship, Pres. **Dombrowski, Eleanore A.**, Liberal Arts, B. S., Sarmatia, Home Ec Club, Newman Club.

Bottom, row one: **Dombrowski, Ladislaus B.**, Education, B. S., Sarmatia, Pres., Shals, Natural Science Club. **Dopulos, Nicholas L.**, Liberal Arts, B. A., Alpha Neo. **Dworkin, Frances**, Education, B. S., A. C. E., Sigma Theta Delta, Pres., Hillel Foundation, Prov. Gov't. Row two: **Eastland, Patricia**, Education, B. A., A. C. E., Pres. **Echols, Dora Mae**, Liberal Arts, B. A., Les Thelemites, Panorama Writer. **Edwards, Blodwyn**, Education, B. S., Delta Gamma Chi, Senior Bd., A. W. S. Fun and Frolic, Chrm.



DOMBROWSKI, LADISLAUS
EASTLAND, PATRICIA

DOPULOS, NICHOLAS
ECHOLS, DORA MAE

DWORKIN, FRANCES
EDWARDS, BLODWYN

CORT, NINA
DANTE, RUTH

COX, ERMA
DARLING, MARY ELLEN

CROCKETT, DAVID
DARR, BLOSSOM

CRUZ, PEDRO
DAVIES, ISABEL

DACHOFF, DACHO
DAY, ROBERT

EHRlichman, ESTHER
ENZMANN, ARTHUR

EISMAN, EVELYN
ERNATT, EDWARD

EISENSMITH, IDA
ERoss, LILLIAN

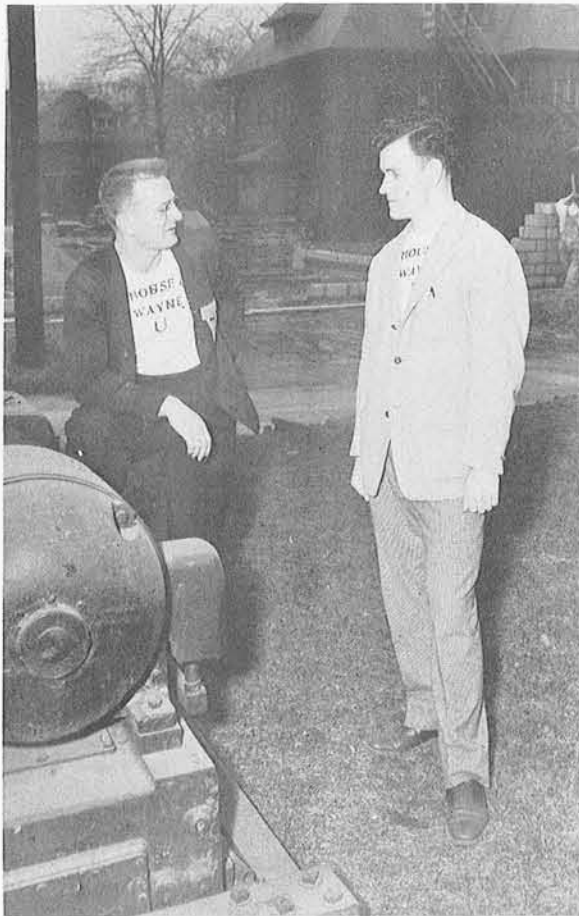
FUJIMOTO, HIROSHI
GOEBEL, LAWRENCE

GARNER, GLADYS
GOODMAN, SELMA

GENTILE, MARIE
GOODMAN, SHIRLEY

GESELIS, DOLLY
GORUP, OLGA

GLASER, GLORIA
GRAY, DAISY



Top, row one: **Ehrlichman, Esther**, Liberal Arts, B. A., Broadcasting Guild, A. W. S., Red Cross, **Eisensmith, Ida**, Education, B. S., Sigma Theta Delta, **Panorama**, Circ., Mngr., Spec. Ed. Soc. **Eisman, Evelyn**, Education, B. S., Health Ed. Major Club, Pres., Iota Alpha Pi, Pres., Senior Dance Group. Row two: **Enzmann, Arthur**, Education, B. S., Arab, I. F. C., Social Studies Club. **Ernatt, Edward**, Liberal Arts, B. A., W. U. V. A., Symphony Orch. **Eross, Lillian**, Liberal Arts, B. A., A. W. S. Mailbox Comm.

Bottom, row one: **Ferguson, Malcolm V.**, Education, M. A., Phi Delta Kappa, Research. **Finegold, Esther**, Liberal Arts, B. A., Theater, N. A. A. C. P. **Fink, Shirley L.**, Liberal Arts, B. M. **Francis, Marion I.**, Education, B. A. **Frazer, Kathleen A.**, Education, B. A., Centerbury, Club, Alpha Theta Sigma, Rec. Sec'y. Row two: **Freed, Helen**, Education, B. A., Red Cross, Chrm., A. W. S. Exec. Bd., Sigma Theta Delta. **Freeman, Wilma**, Education, B. S., Alpha Kappa Alpha, Treas., Science Club, Hist. **Friedman, Ann**, Liberal Arts, B. A. Avukah. **Friedman, Frank O.**, Liberal Arts, B. A., Hillel, A Capella Choir. **Frost, Joyce A.**, Liberal Arts, B. S., Xi Omicron, Senior Class Day Comm.

Top, row one: **Fujimoto, Hiroshi**, Liberal Arts, B. S., Sigma Phi Lambda, Sec'y. **Garner, Gladys**, Liberal Arts, B. S., Zeta Chi, **Griffin**, Assoc. Ed. '44, A. W. S. Exec. Bd. **Gentile, Marie**, Liberal Arts, B. S., Alpha Theta Sigma. **Geselis, Dolly**, Education, B. S. **Glaser, Gloria**, Liberal Arts, B. A., Iota Alpha Pi, Corr. Sec'y., El Circulo Espanol. Row 2: **Goebel, Lawrence, J.** Education, B. A., Gamma Phi Delta, Sec'y. **Goodman, Selma M.**, Liberal Arts, B. A. **Goodman, Shirley B.**, Education, B. S., Later Elem. Club. **Gorup, Olga F.**, Education, B. S., Alpha Theta Sigma, Corr. Sec'y. A. C. E., A. W. S. Party Plotters. **Gray, Daisy N.**, Nursing, B. S., Messiah, R. N. Club.

Bottom, row one: **Gray, Forrest**, Engineering, B. S. **Green, Frank**, Engineering, B. S. **Groesser, Mardelle**, Education, B. S., Senior Bd., Pi Kappa Sigma, Keeper of Archives, A Capella Choir. **Gross, Edith**, Liberal Arts, B. A., Iota Alpha Pi. **Gross, Ellen J.**, Education, B. S., Xi Omicron, V. Pres., A. W. S. Exec. Bd., Natural Science Club, Pres. Row two: **Grubaugh, Harriett**, Liberal Arts, B. A., Pi Gamma Pres. **Guinness, Shirley**, Education, B. S., Pi Kappa Sigma. **Halick, Josephine**, Education, B. S., Alpha Beta Pi, Sec'y. Social Studies Club. **Hallett, Dorothy**, Education, B. A. **Harris, Dorothy J.**, Education, B. S., Alpha Sigma Tau, Science Club.



HENRICH, VERA
HOLSTEIN, LOIS

HESSE, SHIRLEY
HOLT, ELEANOR

HILL, JOANN
HOWARD, AUDREY

HOLLIDAY, LELIA
HOWARD, EPHRAIM

HOLLIS, ANDREW
HARRIGAN, GWENDOLYN

JENKINS, GEORGIA
JONES, DORA

JETT, CATHERINE
KACZMAREK, IRENE

JOHNSON, BERNADINE
KALLUS, SHIRLEY

JOHNSON, WALTER
KATZ, NORMAN

JONES, DONNA
KAWAMURA, MARY



Top row one: **Henrich, Vera**, Liberal Arts, B. A., Zeta Chi, Treas. **Hesse, Shirley**, Education, B. S., Phi Upsilon Omicron, Pres., Sigma Iota, I. S. C. Rep., Home Ec. Ed. Club, Sec'y. **Hill, Joann L.**, Liberal Arts, B. A., Med. Tech. Club, Exact Science Club, Messiah. **Holliday, Lelia I.**, Education, B. S., N. A. A. C. P. **Hollis, Andrew J.**, Law, L. L. B., Delta Theta Phi. Row two: **Holstein, Lois**, Education, B. A., Sigma Sigma, Corres. Sec'y., Later Elem. Club. **Holt, Eleanor H.**, Education, B. S., Sigma Iota, Y. W. C. A., Corres. Sec'y., A. C. E. **Howard, Audrey**, Education, B. S., Senior Bd., Corres. Sec'y., Pi Kappa Sigma, Press Agent, Spec. Ed. Club, Pres. **Howard, Ephraim M.**, Engineering, B. S., Student Council, Eng. Society, Sigma Rho Tau. **Harrigan, Gwendolyn S.**, Liberal Arts, B. S., A. W. S. Hospitality Comm., Xi Omicron, Sec'y.

Bottom, Row one: **Hoyt, Mary E.**, Education, B. S., Mu Phi Upsilon, Treas., A Capella Choir, University Band. **Hrdlicka, Mildred**, Education, B. S., Phi Upsilon Omicron, Corres. Sec'y., Alpha Theta Sigma, Home Ec. Ed. Club, Pres. **Imboden, Ellen**, Liberal Arts, B. F. A., Sigma Rho Chi, I. S. C., Sec'y., Alpha Neo. **Ingrao, Frank, D.**, Liberal Arts, B. A., A Capella Choir, Wayne Choral Union. **Irving, George W.**, Pharmacy, B.S., Wayneminster Club. Row two: **Irving, Harriett**, Liberal Arts, B. S., Sigma Iota, Pres., Phi Upsilon Omicron, Chaplain, Home Ec. Club. **Isenberg, Bernard R.**, Liberal Arts, B. S. **Israel, Claire S.**, Liberal Arts, B.A. **Janiszewski, Hedwig**, Education, B. S., Mu Phi Epsilon, Choirester, String Ensemble, Orchestra. **Japowicz, Richard J.**, Liberal Arts, B. A., Senior Bd., I. F. C., Pres., Newman Club.

Top, row one: **Jenkins, Georgia**, Education, B. S., **Jett, Catherine**, Education, B. S., Concert Band, Treas., Delta Gamma Chi, Sec'y., Mu Phi Epsilon. **Johnson, Bernadine J.**, Education, B. S., Spec. Ed. Club, Rec. Sec'y. **Johnson, Walter K.**, Law, L. L. B. **Jones, Donna J.**, Liberal Arts, B. A., Zeta Chi, A Capella Choir, Women's Ensemble. Row two: **Jones, Dora**, Education, B. S., Delta Sigma Theta, Home Ec. Ed. Club. **Kaczmarek, Irene**, Education, B. S., Alpha Sigma Tau, W. A. A., Sec'y., Sarmatia, Pres. **Kallus, Shirley**, Education, B. S., Alpha Neo, Art Ed. Club. **Katz, Norman D.**, Liberal Arts, B. A., Pi Tau Sigma, V. Pres., I. F. C. **Kawamura, Mary M.**, Education, B. S. Bottom, row one: **Keith, Marion**, Education, B.A., Delta Gamma Chi. **Kilpela, Eunice**, Education, B. S., Who's Who, Delta Gamma Chi, Corr. Sec'y. Senior Bd., Soc. Chrm. **King, Pearl**, Education, B. A. Row two: **Klein, Myer**, Engineering, B. S., I. A. S., Chrm. **Klimist, Marilyn**, Liberal Arts, B. A., English Club. **Kofender, Al**, Education, B. S.





KOSMOWSKI, JEANNE
KREZENSKA, MARY



KRAWOOD, BEN
KUMOVE, FRIEDA



KREZENSKA, DOROTHY
KURTZ, BETTY



Top, row one: **Kosmowski, Jeanne**, Education, B. S., Pi Kappa Sigma Y. W. C. A. **Krawood, Ben**, Liberal Arts, B. S., Alpha Kappa Psi. **Krezenska, Dorothy J.**, Liberal Arts, B. A., Junior Bd., Senior Bd., Pi Kappa Sigma. Row two: **Krezenska, Mary H.**, Education, B. A., Pi Kappa Sigma, Sec'y., Senior Bd. Sec'y. Social Studies Club. **Kumove, Frieda**, Education, B. A., Avukah, Social Studies Club. **Kurtz, Betty**, Education, B. S., Junior Dance Group, Pres., W. A. A., Sigma Theta Delta.
Bottom, row one: **Laehn, Laura**, Education, B. S., Sigma Iota, Sec'y., Home Ec. Club, Sec'y. **Larson, Pearl**, Education, B. S. **Lawson, Laurence E.**, Education, B. A. **Lazar, Dorothy**, Liberal Arts, B. A., Freshman Bd., S. W. E. C. **Lederer, Phyllis**, Education, B. A., Sigma Theta Delta, Social Studies Club, El Circulo Espanol. Row two: **Lee, Barbara**, Liberal Arts, B. F. A., A. W. S. Pen and Brush, Chrm., Alpha Neo, Industrial Design Club, Pres. **Lehrman, Sylvia**, Education, B. S. **Leszynski, Estelle**, Liberal Arts, B. A., Les Thelemites, Pres., Student Stage. **Levin, Ruth S.**, Liberal Arts, B. A., Iota Alpha Pi, Hillel. **Levine, Ruth, M.**, Liberal Arts, B. A., COLLEGIAN, Ed., Iota Alpha Pi, Pres., Who's Who:



LAEHN, LAURA
LEE, BARBARA

LARSON, PEARL
LEHRMAN, SYLVIA

LAWSON, LAURENCE
LESZYNSKI, ESTELLE

LAZAR, DOROTHY
LEVIN, RUTH

LEDERER, PHYLLIS
LEVINE, RUTH

LEWIS, PATRICIA
MACK, DOROTHY



LIPCHINSKY, DORIS
MacKENZIE, KITTIE



LOCKWOOD, PATRICIA
MALLOS, CHRISTINE



LOCKWOOD, VIRGINIA
MANHEIM, SHIRLEY

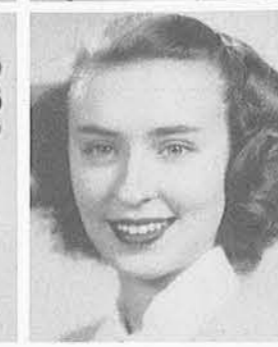
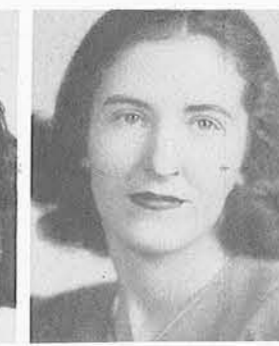


LYONS, BEVERLY
MARTIN, TUNNIE



Top, row one: **Lewis, Patricia L.**, Education, B.S., Alpha Sigma Tau, W.A.A., Health Ed. Major Club. **Lipchinsky, Doris L.**, Liberal Arts, B.S., Sophomore Bd., Sigma Theta Delta, Treas., A.W.S. War Efforts Comm. **Lockwood, Patricia**, Education, B.S., Omega Upsilon. **Lockwood, Virginia**, Education, B.S., Pi Kappa Sigma. **Lyons, Beverly**, Education, B.S., Art Ed. Club, Pres., Senior Bd. Student Council, Treas. R. 2. **Mack, Dorothy J.**, Education, B.A., A.C.E. **MacKenzie, Kittie M.**, Liberal Arts, B.F.A., Delta Gamma Chi, Alpha Neo, I.S.C., Treas. **Mallos, Christine**, Liberal Arts, B.A. **Manheim, Shirley B.**, Education, B.A., Sigma Theta Delta, Sec'y. **Martin, Tunnie**, Liberal Arts, B.A., C.I.R., V. Pres., Kappa Alpha Psi, Historian, Student Faculty Activities Comm.

Bottom, row one: **Martinez, Shirley**, Liberal Arts, B.A., **Griffin, Ed.**, Junior Bd., Sec'y., Who's Who. **May, Marjorie**, Education, B.S., Delta Sigma Theta. **McClellan, Audrey**, Education, B.A., Omega Upsilon, Y.W.C.A., C.I. R. **McClellan, Bernadine, E.**, Liberal Arts, B.A., A.W.S., Program Sec'y., **Griffin, Senior Ed.**, El Circulo Espanol. **McClurg, Nancy A.**, Liberal Arts, B.S., Freshman Bd., Sec'y., XI Omicron, Wintermart. R. 2, **McLeod, Emma M.**, Education, B.S. **McQueen, Eloise**, Education, B.A., Science Ed. Club. **Merriveather, Rose L.**, Education, B.S., Delta Sigma Theta, A.C.E., N.A.A.C.P. **Meyer Nondis, J.**, Liberal Arts, B.A., Y.W.C.A., Treas. **Middler, Margaret**, Education, B. S.



MARTINEZ, SHIRLEY
MCLEOD, EMMA

MAY, MARJORIE
MCQUEEN, ELOISE

MCCLELLAN, AUDREY
MERRIVEATHER, ROSE

MCCLELLAN, BERNADINE
MEYER, NONDIS

MCCLELLAN, NANCY
MIDDLER, MARGARET

MILLER, BARBARA
MOCERI, AGNES

MILLER, JUNE
MOORE, ELEANOR

MINAUDO, THERESA
MORSE, MARIE

MIRVIS, EDITH
MOSES, LUCILE

MISKIN, ISRAEL
MOUHOT, MARGARET

PAGE, ELLEN
PFROMM, DORIS

PARTRIDGE, DOROTHY
PIAVEN, TENA

PEARSE, MARYANNA
PIERCE, CHESTER

PETIT, VIRGINIA
PIKIN, SYLVIA

PETZ, WELDON
POET, JEANETTE



Top, row one: **Miller, Barbara J.**, Liberal Arts, B.A., Y.W.C.A., A.W.S. Activities Bd., Alpha Sigma Tau, Sec'y. **Miller, June I.**, Liberal Arts, B.A., Sigma Sigma, Pres., A.W.S. Exec. Bd., Treas., Who's Who. **Minaudo, Theresa**, Education, B.S., Y.W.C.A. **Mirvis, Edith**, Liberal Arts, B.A., **Miskin, Israel A.**, Liberal Arts, B.S. R. 2, **Moceri, Agnes**, Education, B.S., **Moore, Eleanor**, Education, B.S., Delta Gamma Chi, Pres. **Morse, Marie**, Liberal Arts, B.A., **Griffin**. **Moses, Lucile**, Education, B.S., Wesley Foundation, V. Pres., Omega Upsilon, V. Pres. **Mouhot, Margaret**, Education, B.S., Senior Bd., Pi Kappa Sigma, A Capella Choir.

Bottom, row one: **Mussill, Dorothy**, Liberal Arts, B.A., Alpha Beta Pi, Soc. Chrm., Y.W.C.A., A.W.S., **Muthleb, Mildred V.**, Liberal Arts, B.S., Alpha Kappa Alpha, Sentinel. **Napolitano, Dorothy**, Liberal Arts, B.A., Alpha Beta Pi, Math Club. **Neal, Dorothy**, Liberal Arts, B.S., Pi Kappa Sigma, Home Ec. Club. **Newgarde, Virginia**, Education, B.A., R. 2, **Nicholson, Fred**, Education, B.A., **Nolan, Margaret P.**, Education, B.S., Pi Kappa Sigma, Y.W.C.A. **Oates, Judith**, Liberal Arts, B.A., Delta Gamma Chi, **Panorama**, Editorial Bd., A.W.S. Exec. Bd. **Ott, Eleanor P.**, Liberal Arts, B.S., Xi Omicron, Pres., Senior Bd., A.W.S. War Efforts Comm. **Owen, William H.**, Liberal Arts, B.S., Sigma Epsilon Phi, Pres., Senior Bd., M.U. Bd. of Governors.

Top, row one: **Page, Ellen**, Liberal Arts, B.A., Alpha Kappa Alpha, Pres., C.I.R., Chrm. N.A.A.C.P. **Partridge, Dorothy M.**, Education, B.S. **Pearse, Maryanna**, Liberal Arts, B.A., Theater, Pi Kappa Sigma, Sec'y., Delta Sigma Rho, Pres. **Petit, Virginia M.**, Liberal Arts, B.A., Math Club, Alpha Beta Pi, I.S.C. **Petz, Weldon**, Education, B.S., Phi Mu Alpha, Concert Band, V. Pres., A Capella Choir. R. 2, **Pfromm, Doris**, Liberal Arts, B.A., A.W.S. Mailbox Comm., **Griffin**, Press Club **Piaven, Tena**, Education, B.A., El Circulo Espanol, A.C.E. **Pierce, Chester C.**, Liberal Arts, B. A. **Pikin, Sylvia**, Liberal Arts, B.A., Dance Group, N.A.A.C.P., Hillel. **Poet, Jeanette**, Education, B.A., Zeta Chi, V. Pres., A.C.E., V. Pres., A.W.S. Mailbox Comm.

Bottom, row one: **Powell, Lucille**, Education, B.A., Canterbury Club. **Quay, William E.**, Education, B.A. **Querciagrossa, Helen**, Education, B.A., Sigma Iota, Newman Club, Social Studies Club. R. 2, **Rassette, Katherine**, Pharmacy, B.S., American Chem. Soc., Sec'y., **Wayne Pharmic**, Rep. **Reid, Betty Jane**, Education, B.A., Pi Kappa Sigma, Corres. Sec'y., Senior Bd., A.W.S. **Reisman, Malverne**, Education, B.A., Reader's Bureau.



MUSSILL, DOROTHY
NICHOLSON, FRED

MUTHLEB, MILDRED
NOLAN, MARGARET

NAPOLITANO, DOROTHY
OATES, JUDITH

NEAL, DOROTHY
OTT, ELEANOR

NEWGARDE, VIRGINIA
OWEN, WILLIAM

POWELL, LUCILLE
RASSETTE, KATHERINE

QUAY, WILLIAM
REID, BETTY JANE

QUERCIAGROSSA, HELEN
REISMAN, MALVERNE



RICHARD, AILEEN
RIGGS, MILLICENT



RICHARDSON, ISABELLE
ROGOWSKI, CHRISTINE



RIGGS, MARJORIE
ROZICH, ANNE



SCHMIDT, LILLIAN
SCHWARTZ, RACHAEL



SCHMIDT, ROSE MARIE
SCHWEITZER, JEAN



SCHUBINER, SHIRLEY
SENN, PETER



SCHULTZ, ROSEMARY
SEWA, KATHLEEN



SCHWARTZ, ERNEST
SHAPIRO, SOPHIA



Top, row one: **Richard, Aileen**, Liberal Arts, B.A., Alpha Beta Pi, Corres. Sec'y., Broadcasting Guild, Student Stage. **Richardson, Isabelle**, Liberal Arts, B.S., Alpha Kappa Alpha, Dean of Pledges, Home Ec. Club. **Riggs, Marjorie**, Education, B.S., Delta Gamma Chi, W.A.A., Health Ed. Major Club. R. 2, **Riggs, Millicent**, Liberal Arts, B.A., W.A.A., El Circulo Espanol, Wayne Christian Fellowship. **Rogowski, Christine**, Education, B.S., Sarmatia, Sec'y., Newman Club. **Rozich, Anne**, Liberal Arts, B.S., Home Ec. Club, Sigma Rho Chi.
Bottom, row one: **Rubinstein, Florence**, Education, B.A., Broadcasting Guild, A.C.E., Les Thelemites. **Rush, Edna J.**, Education, B.S., Band, Pres., Mu Phi Epsilon, Pres., Orchestra. **Rutowski, Elaine M.**, Pharmacy, B.S., Lambda Kappa Sigma, Historian. **Rylander, Betty**, Education, B.A., Pi Kappa Sigma, Treas., Senior Bd. **Salk, Helen**, Education, B.S., Sigma Theta Delta. R. 2, **Sampich, Nancy Sue**, Education, B.S., Pi Kappa Sigma, Pres., Y.W.C.A. **Sartorius, Ruth**, Liberal Arts, B.A. Theta Kappa Sigma, V. Pres., **Panorama**, Editorial Bd., **Collegian**. **Scanlan, Marion T.**, Liberal Arts, B.A. **Schlatter, Marion**, Liberal Arts, B.A., Delta Gamma Chi. **Schmidt, Lester F.**, Liberal Arts, B.A.

Top, row one: **Schmidt, Lillian**, Education, B.S., Alpha Sigma Tau, Pres. **Schmidt, Rose Marie**, Education, B.S., Alpha Sigma Tau. **Schubiner, Shirley R.**, Education, B.S., Student Council, F.E.C., V. Pres., A.W.S. Music Group, Chrm. **Schultz, Rosemary**, Liberal Arts, B.A., Delta Gamma Chi, Wintermart, Chrm. '45, Who's Who. **Schwartz, Ernest J.**, Liberal Arts, B.A. R. 2, **Schwartz, Rachael**, Education, B.A., Iota Alpha Pi. **Schweitzer, Jean**, Liberal Arts, B.A., English Club, Gamma Delta. **Senn, Peter**, Liberal Arts, B.A., Newman Club, V. Pres., Chem. Club, Pres. **Sewa, Kathleen**, Education, B.S., Alpha Theta Sigma, Treas., Phi Upsilon Omicron, V. Pres., Home Ec. Club. **Shapiro, Sophia**, Liberal Arts, B.A., Alpha Neo, Alpha Kappa Delta, Avukah, Sec'y.

Bottom, row one: **Shaw, Adeline M.**, Education, B.S., Alpha Sigma Tau, Y.W.C.A., Wesley Foundation. **Sheplov, Bernice**, Liberal Arts, B.A., A Copella Choir, Senior Class Day Comm., Freshman Bd. **Sherlitz, Jill**, Liberal Arts, B.F.A., Delta Gamma Chi, V. Pres., Industrial Design Club, Treas., **Griffin**, Feature Ed. **Sherman, Jeannette**, Liberal Arts, B.A., **Sherman, Ruth**, Education B.A., A.C.E. R. 2, **Shesgreen, Richard**, Liberal Arts, B.A., Newman Club, Paper Staff, Evening Student Bd., Treas. **Shevock, Veronica**, Liberal Arts, B.S., Home Ec. Club, Phi Upsilon Omicron, Omega Upsilon. **Silver, Jerome**, Liberal Arts, B.S., W.U.V.A. **Simon, Jean E.**, Education, B.S., Delta Gamma Chi, Treas., W.A.A., Pres., Health Ed. Club. **Sippel, Albert C.**, Pharmacy, B.S., M.U. Bd. of Governors, Corres. Sec'y., Pi Upsilon, Tower Guard.



RUBENSTEIN, FLORENCE
SAMPICH, NANCY SUE

RUSH, EDNA
SARTORIUS, RUTH

RUTKOWSKI, ELAINE
SCANLAN, MARION

RYLANDER, BETTY
SCHLATTER, MARION

SALK, HELEN
SCHMIDT, LESTER



SHAW, ADELINE
SHESGREEN, RICHARD

SHEPLOW, BERNICE
SHEVOCK, VERONICA

SHERLITZ, JILL
SILVER, JEROME

SHERMAN, JEANNETTE
SIMON, JEAN

SHERMAN, RUTH
SIPPEL, ALBERT

SIROTA, BERNA
SPEARPOINT, JEANNE



SLABY, H. TED
STALTMAN, MARY



SMITH BETTY
STANISLAWSKI, LILLIAN



SMITH, JANICE
STASEVICH, ALEXANDER



SOIFER, RUTH
STEPHEN, JENELDA



TENACE, JAMES
ULINOWSKI, WANDA



THACHER, O. JOAN
URBAN, BETTY



THANOS, CHRISO
USREY, NORMA



THURSTON, DOROTHY
VANDER EYK, WALTER



ULATOWSKI, DANETTE
WALZER, AUDREY



Top, row one: **Sirota, Berna**, Liberal Arts, B.S., A.W.S., Mailbox Comm. **Slaby, H. Ted**, Liberal Arts, B.A., Alpha Delta Psi, Men's Glee Club, Math Club. **Smith, Betty**, Education, B.S., W.A.A., Pres., Health Ed. Major Club. **Smith, Janice**, Liberal Arts, B.A. **Soifer, Ruth**, Education, B.S., Avukah, Sec'y., A Capella Choir, A.C.E., V. Pres. R. 2, **Spearpoint, Jeanne**, Liberal Arts, B.S., Delta Gamma Chi, Phi Upsilon Omicron, Sec'y., Home Ec. Club, Sec'y. **Staltman, Mary A.**, Education, B.A., Xi Omicron, Natural Science Club, Treas. **Stanislawski, Lillian**, Pharmacy, B.S., Lambda Kappa Sigma, Wayne Pharmic, Art Ed. **Stasevich, Alexander**, Liberal Arts, B.S., Newman Club, W.U.V.A. **Stephens, Jenelda E.**, Liberal Arts, B.S., Alpha Kappa Alpha, Sec'y.

Bottom, row one: **Steven, Jeanne**, Education, B.S., Alpha Sigma Tau, Sec'y., W.A.A., Sec'y., Senior Bd. **Stine, Lillian**, Education, B.A., Sigma Theta Delta, Social Studies Club. **Stirton, Isabelle**, Liberal Arts, B.S., Alpha Sigma Tau. **Storey, Alan**, Education, B. S. **Sujishi, Sei**, Liberal Arts, B.S. R. 2, **Sullivan, Ann**, Liberal Arts, B.S., Alpha Sigma Tau. **Sullo, Margaret L.**, Education, B.S. **Taines, Gerald Z.**, Education, B.S., Varsity Fencing Team, Capt., Lettermen's Club, Lettermen's Baseball Team. **Tait, John**, Liberal Arts, B.A., Alpha Kappa Delta, C.I.R. **Tarnoff, Seymour**, Liberal Arts, B.S., M.U. Bd. of Governors.

Top, row one: **Tenace, James**, Education, B.A. **Thacher, O. Joan**, Liberal Arts, B.A., Alpha Theta Sigma. **Thanos, Chriso**, Education, B.S., Sigma Epsilon Phi. **Thurston, Dorothy**, Education, B.A., Sigma Gamma Rho, Pres., A.Y.D., N.A.A.C.P. **Ulatowski, Danette**, Education, B.A., Chorus, Sarmatia. R. 2, **Ulinowski, Wanda**, Education, B.S., Y.W.C.A. **Urban, Betty, J.**, Education, B.S., Alpha Beta Pi. **Usrey, Norma**, Education, B.A., Alpha Sigma Tau, Pres., I.S.C., Pres., Senior Bd. **Vander Eyk, Walter**, Liberal Arts, B.A., Beta Gamma. **Walzer, Audrey F.**, Liberal Arts, B.A., Collegian, Office Mgr. Bottom, row one: **Waters, Norma**, Education, B.S., Wesley Foundation. **Weeks, M.**, Education, B.S., Mu Sigma Pi, Pres. **Weinberg, Bette**, Education, B.A., Iota Alpha Pi, V. Pres., I.S.C., Hillel. R. 2, **Weintraub, Bernice**, Education, B.S., Iota Alpha Pi, Treas., Health Ed. Major Club. **Weisman, Sarah**, Liberal Arts, B.S., A.W.S. Mailbox Comm. **Wendt, Shirley**, Education, B.A.



STEVEN, JEANNE
SULLIVAN, ANN



STINE, LILLIAN
SULLO, MARGARET



STIRTON, ISABELLE
TAINES, GERALD



STOREY, ALAN
TAIT, JOHN



SUJISHI, SEI
TARNOFF, SEYMOUR



WATERS, NORMA
WEINTRAUB, BERNICE



WEEKS, M.
WEISMAN, SARAH



WEINBERG, BETTE
WENDT, SHIRLEY



WESTMAN, JEAN
WILCOXEN, FRANCES

WHITE, JUNE
WILHELMI, ELIZABETH

WHITWORTH, THOMASINA
WILLIAMS, BETTY JANE



Capella Choir, Delta Gammi Chi, Mu Phi Epsilon, Rec. Sec'y.
Bottom, row one: **Williams, Ruth**, Education, B.A., Delta Sigma Theta. R. 2, **Wilson Alice V.**, Nursing, B.S., R.N. Club. **Wilson, Jean F.**, Education, B.S., A.C.E. **Winston, Rebecca**, Law, L.L.B. **Wolodzko, Victoria**, Education, B.A. **Wolrauch, Mildred**, Education, B.S., Iota Alpha Pi, C.I.R., Later Elem. Ed. Ass'n. R. 3, **Zelazny, Joseph**, Liberal Arts, B.A., Sarmatia, V. Pres. **Zeltzer, Mildred**, Education, B.S., Sigma Theta Delta, Student Dance Group, A Capella Choir. **Zemel, Diana**, Liberal Arts, B.A. **Zubroff, Leonard**, Liberal Arts, B.A., Who's Who, Student Council Assembly Comm., M.U. Bd. of Governors. **Zukowski, John**, Liberal Arts, B.S., American Chem. Soc.

WILLIAMS, RUTH



Top, row one: **Westman, Jean S.**, Education, B.S., Sigma Rho Chi, Pres., Health Ed. Major Club, V. Pres., W.A.A. **White, June E.**, Liberal Arts, B.F.A., Sigma Theta Delta, Alpha Neo, Wintermart. **Whitworth, Thomasina**, Education, B.S., Alpha Kappa Alpha. R. 2, **Wilcoxen, Frances**, Liberal Arts, B.A., Xi Omicron, Class Day Comm. **Wilhelmi, Elizabeth**, Education, B.A., Senior Bd., Pres., Gold Key, Pres., Pi Kappa Sigma. **Williams, Betty Jane**, Education, B.A., A



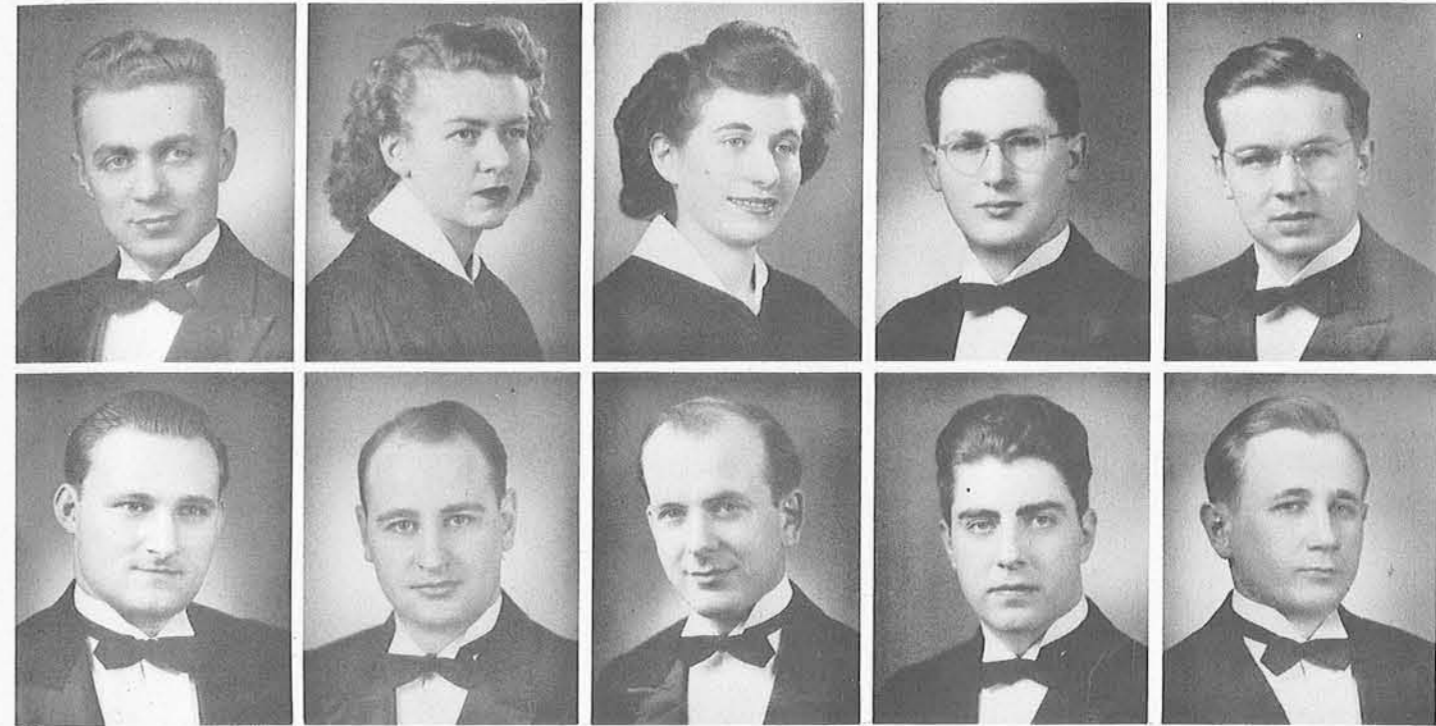
WILSON, ALICE
ZELAZNY, JOSEPH

WILSON, JEAN
ZELTZER, MILDRED

WINSTON, REBECCA
ZEMEL, DIANA

WOLODZKO, VICTORIA
ZUBROFF, LEONARD

WOLRAUCH, MILDRED
ZUKOWSKI, JOHN



ALBRECHT, ALBERT J.
BERMAN, LEONARD

AMMON, HELEN C.
BIALIK, MICHAEL

AXELROD, MILDRED Y.
BIGMAN, OSCAR

AXELROD, ROBERT G.
BOLTON, RUSSELL

BECON, HERBERT G.
BRISTOL, WM. R.

COLLEGE OF MEDICINE

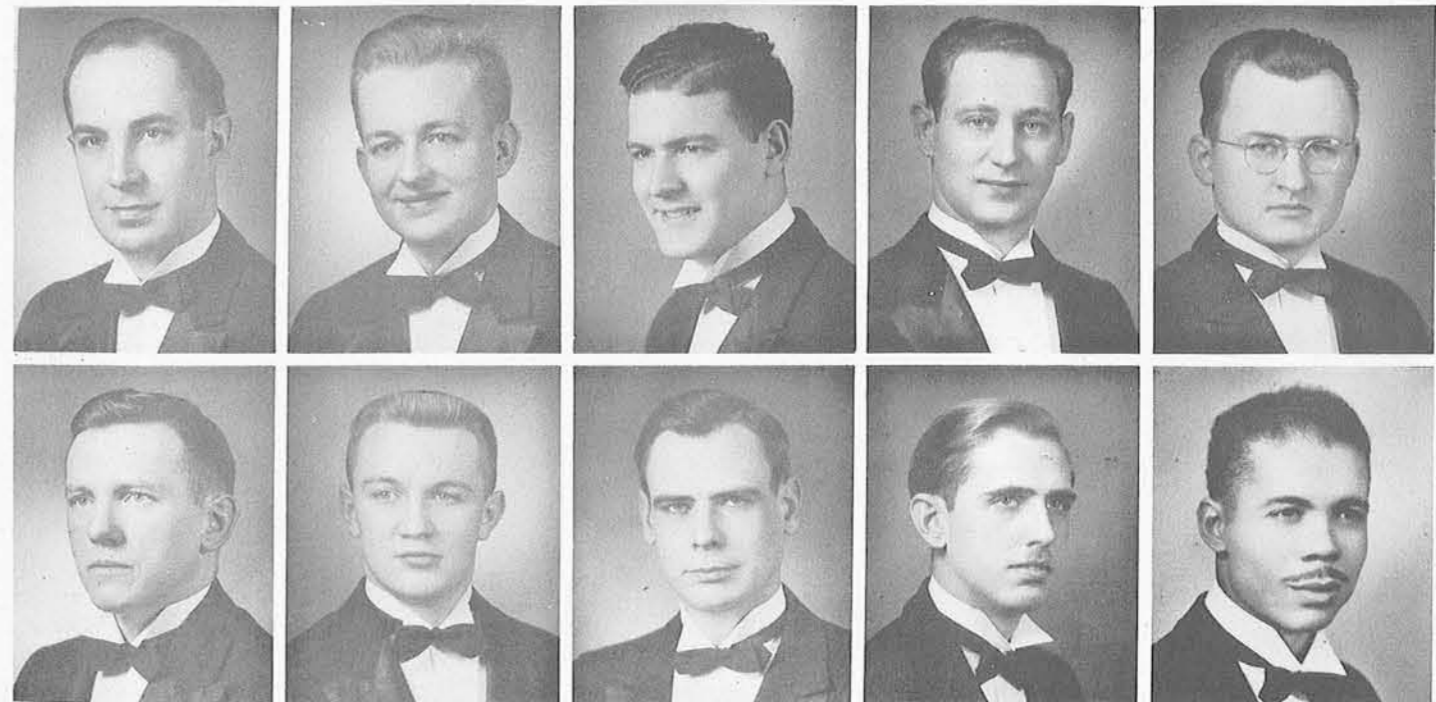
CLASS, ROBERT N.
GOUDIE, FREDERICK D

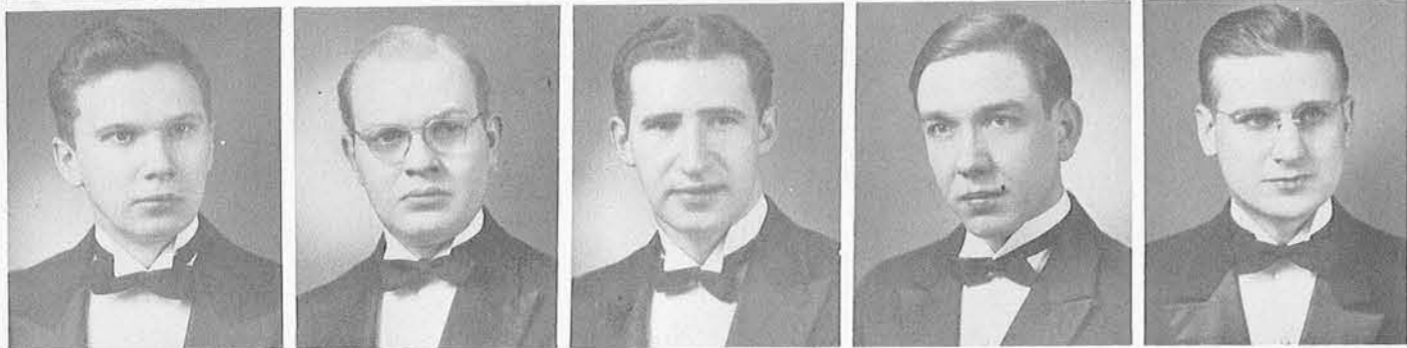
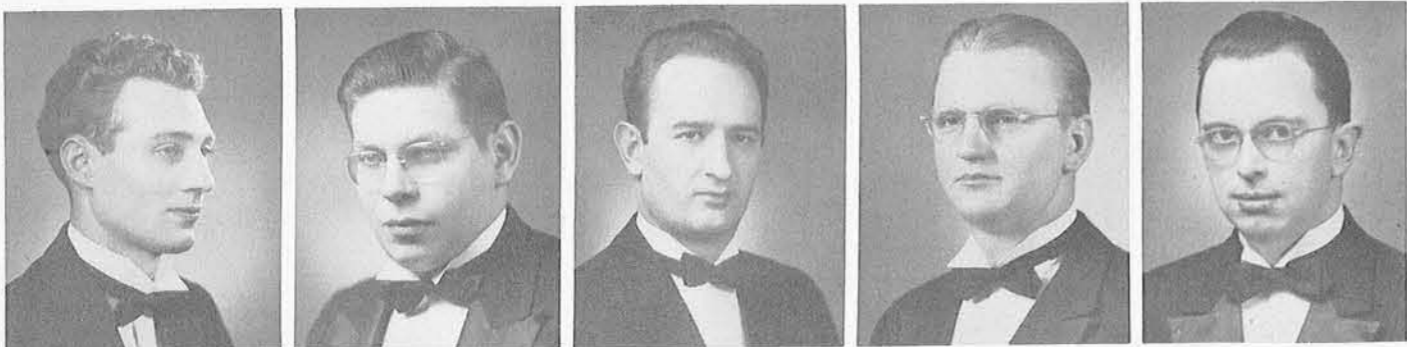
CZUJ, JOHN M.
GUNDERSON, EDW. P.

FRIEDGOOD, CHAS. E.
HAMILTON, JOHN D.

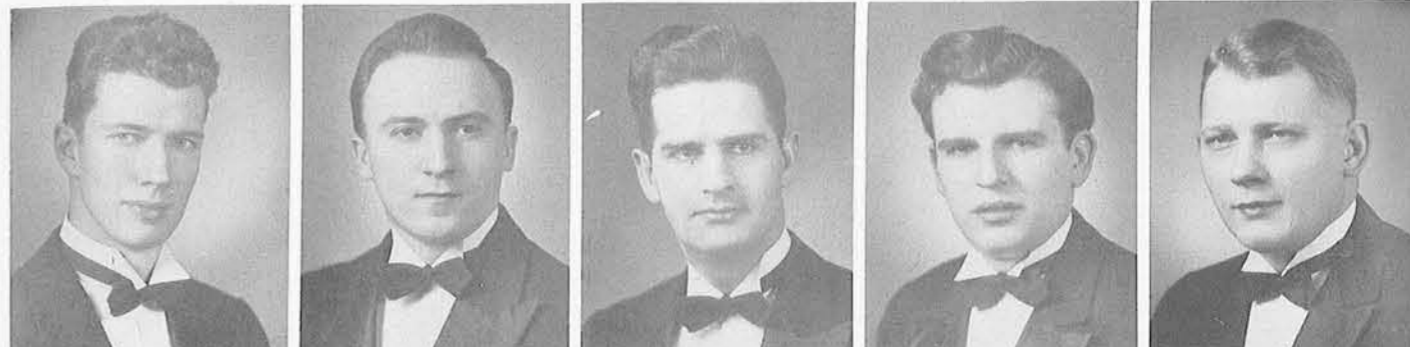
GERISCH, ROBERT
HAMMER, ROY

GIERLACH, ZYGMUNT S.
HARRIS, ARTHUR D.





HAZEN, ROY S. ISAACSON, HAROLD S. KOZLOW, CLIFFORD S. KUHN, ROBERT E. LAJOIE, LOUIS J.
 LANGIN, JOHN L. LEACH, ROBERT B. LIPNIK, MORRIS J. MASSEY, ROBERT U. MILLER, CARROLL D.

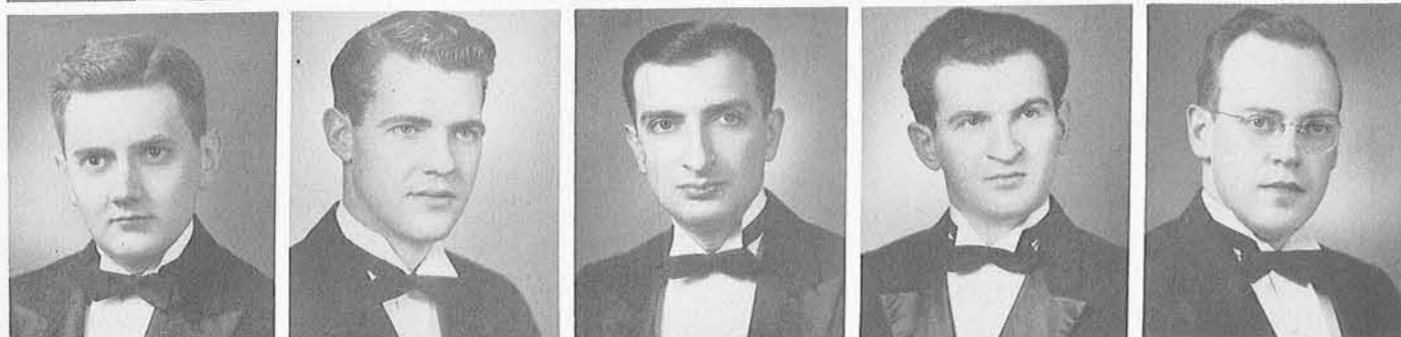
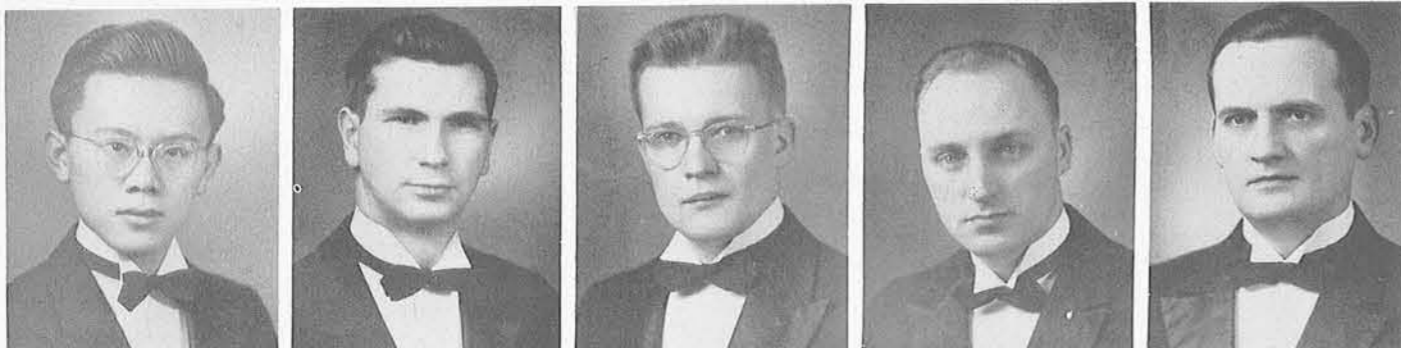


SCHAAF, MARCUS J. SERNIAK, JOHN A. SHEFFER, MARCUS B. SHEVIN, FREDERICK F. STEINER, FREDERICK B.
 SZEFRNER, ESTHER TEXTER, E. CLINTON TRADER, KENNETH VELING, WILLIAM F. ZAMORA, PABLO, J.

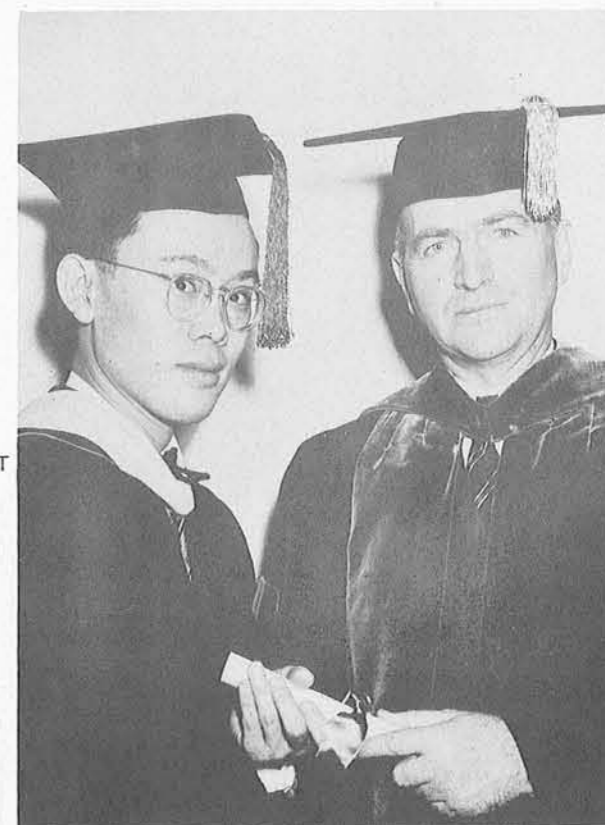
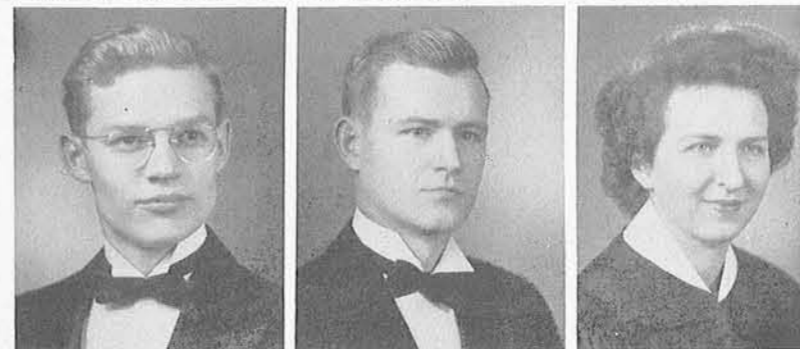
DOCTORS OF

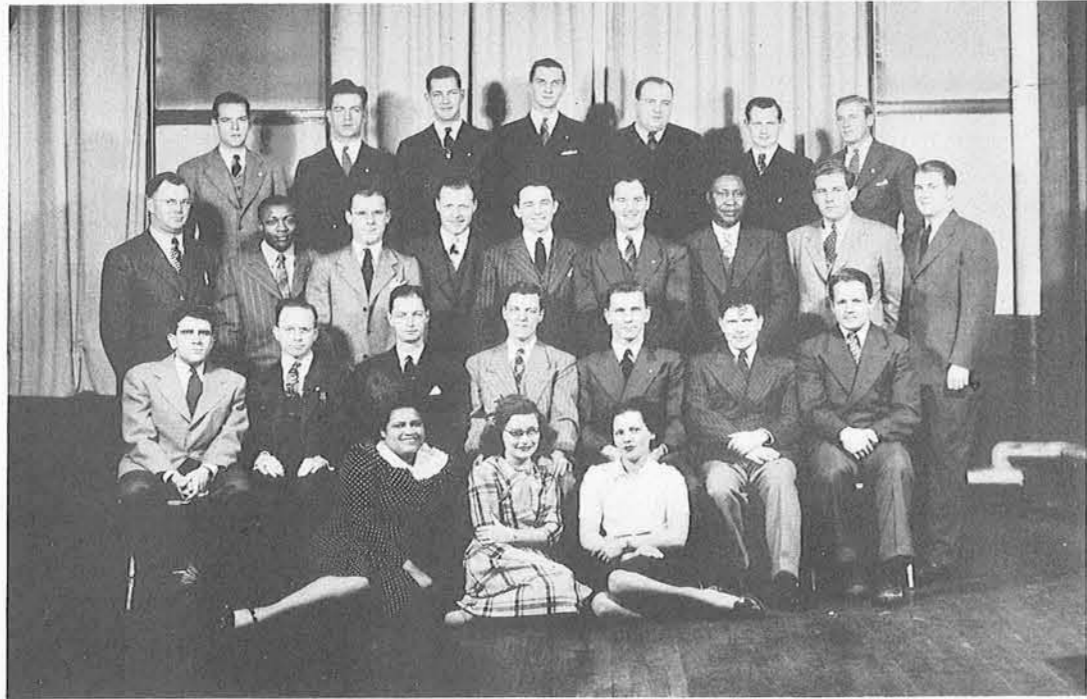
MEDICINE

MORITA, YOSHIKAZU OSTREICH, LEONARD L. PERCY, DONALD F. PHILLIPS, FRED POLENTZ, CHAS. P.
 RAVITZ, LEONARD J. ROBINSON, ORLO J. WILLIAM ROSOW SANDBERG, AVERY A. SARGENT, RICHARD



ZELASKI, STANLEY L. ZIMMERMAN, WALTER ZOLLIKER, MARGARET





ONE YEAR CERTIFICATE PROGRAM

Row one: Ridley, B., Zinoler, M. K., Stenson, B.
 Row two: Schmidt, E., Vich, H., Hartley, R., Metcalf, W. J. Romstod, W. A., Hayes, C. T., Barnard, D. B.
 Row three: Veldson, C., Perkins, W., McCormick,

E., Duff, R., Grant, G. C., Montague, H. F., Smith, L. W., Daggett, G. N., Cole, J. R.
 Row four: Gorsline, D. R., Geletzke, C. H., Miller, C. H., Zaagman, R. W., Roickmann, B. H., Hopcraft, A. L., Corey, O. W.

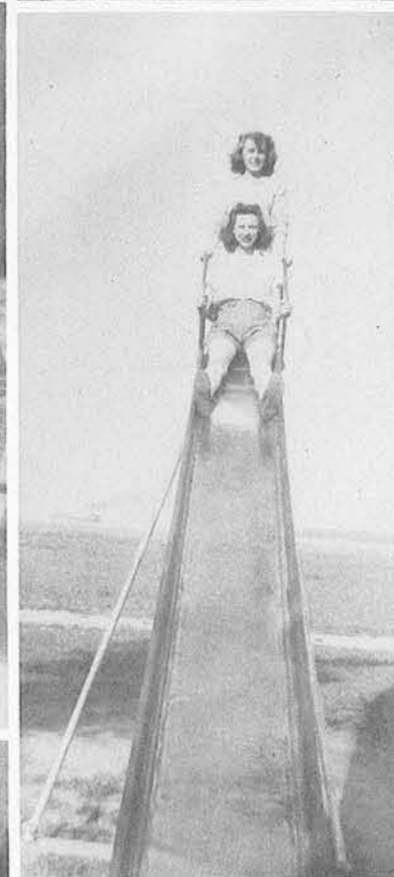
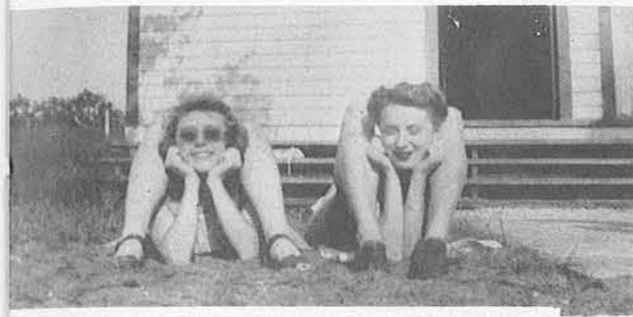
MORTUARY SCIENCE

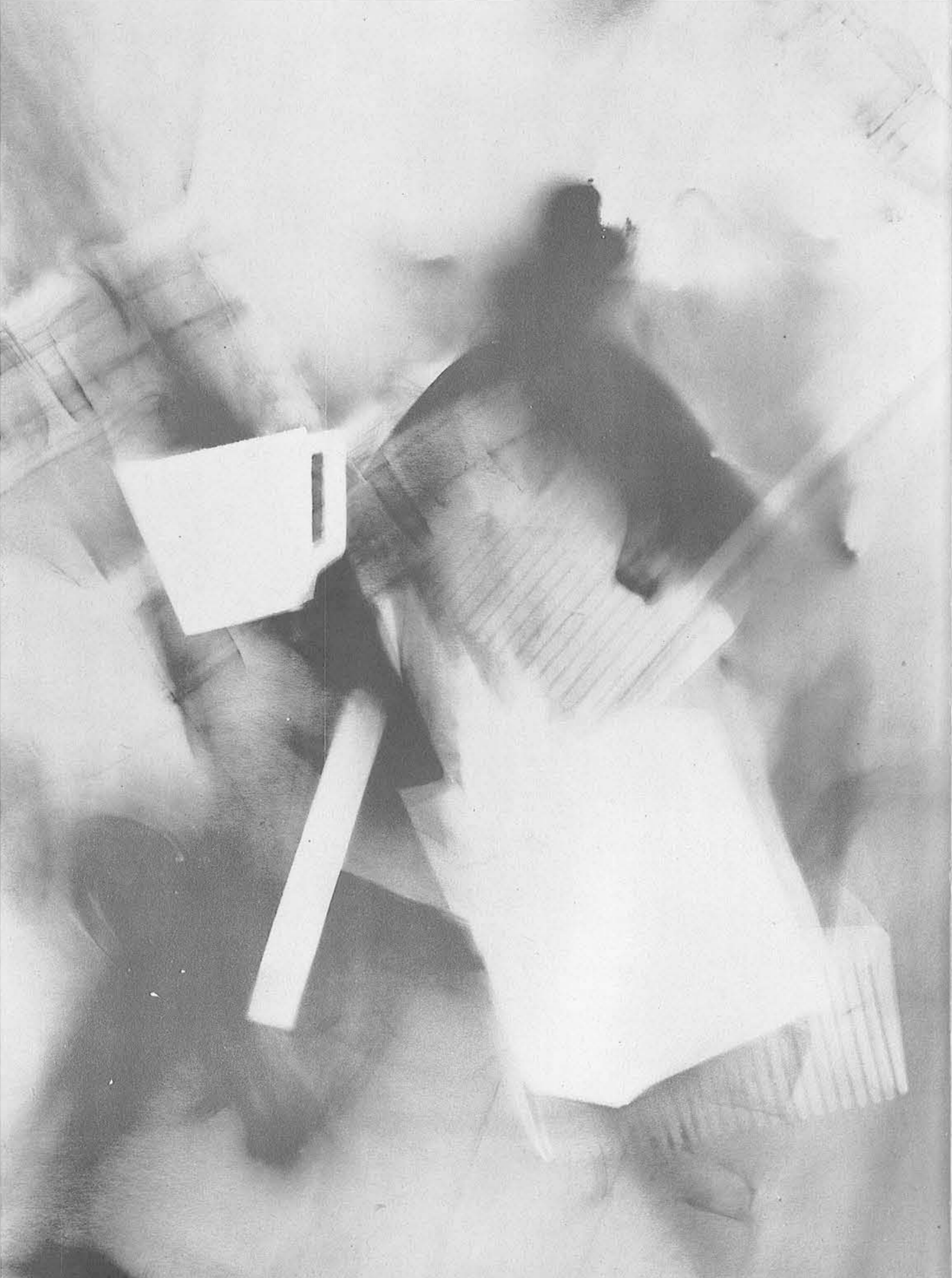


Row one: Imazu, K., Lever, P., McDougall, L., Marich, D., Timbers, L.
 Row two: Dechof, E., Davison, G., Pyrros, M., Wimbish, G.
 Not Pictured: Liadis, M., Tergis, S.

SECRETARIAL SCIENCE

TWO YEAR CERTIFICATE PROGRAM





ACTIVITIES



MACKENZIE



GORDON KLOPF
Men's Activities Assistant

Activities Council

Left to right: J. Jkubiec, R. Phelps, S. Mendelsohn, L. Moore, K. Graham, R. Albertson, W. Shal, G. Klopff, F. Budds.



Board of Governors

Seated, left to right: L. Baruch, Pres.; D. Dachoff, V. Pres.; D. Cox, A. Sippel, K. Graham, G. Klopff.

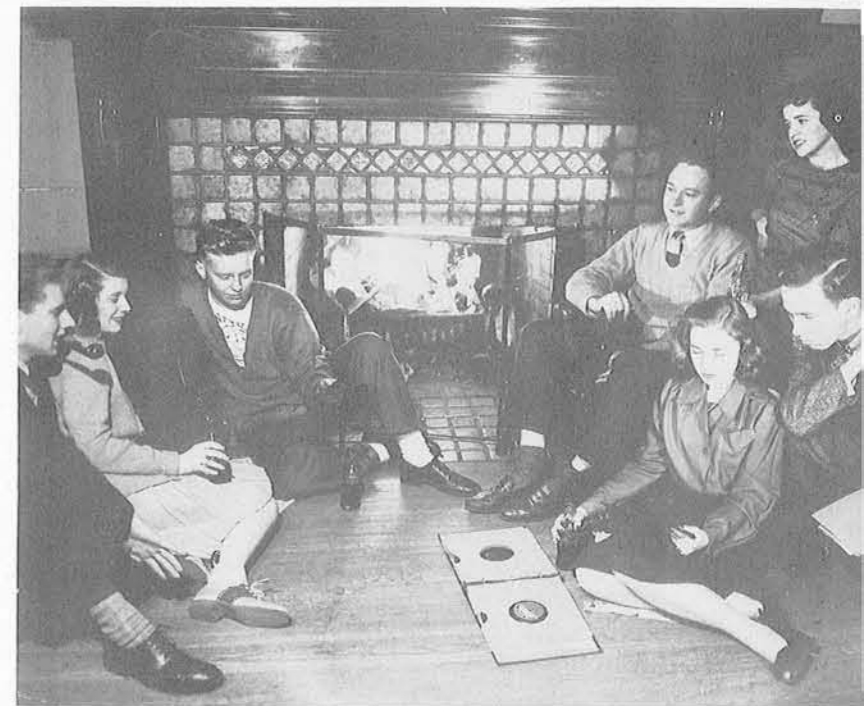
Standing, left to right: S. Tarnoff, J. Manko, E. Bailey, W. Schoenfeld, J. Hart, A. Hale, G. Wilcox, S. Bulmer, G. Clarke, J. Penner, R. Holmes, S. Polansky.



UNION

The Mackenzie Union is one of the busiest buildings on Campus. Besides serving as a meeting place for many organizations, it is the home of the Mackenzie Union Board of Governors and Activities Council, which direct men's activities and, the Wayne University Veteran's Association.

Gordon Klopff, its efficient manager, directs the recreational program and serves as advisor to most of the Union activities. He is always willing to assist those who come to him for help or advice.





The Student Council is composed of students from the colleges of Liberal Arts, Business Administration Education, Engineering, Medicine, Law, Nursing, Pharmacy, and Graduate School.

In an effort to best serve the student body, the Council has delegated certain of its functions to four standing committees: Bldgs. and Grounds, Assembly, Inter-Cultural, Student Community Chairmen of these committees Service.

The Council President appoints tees as well as all students named to University Student-Faculty Committees.

Dr. Margaret Ruth Smith was the Council Advisor for the past year.



Top: B. Morris, B. Lyons, Treasurer; N. Catalano, E. Bailey, D. Hammes, C. Tombaugh, Rec. Secretary; M. J. Lundeen, Vice Pres.; D. Comstock, Pres.; L. Iverson, Corres. Sec.; L. Stawowczyk, J. Miller, P. Abler, B. Owen, L. Larsen, R. Levine, B. Schoenfeld.
Bottom: D. Comstock, D. Hammes, C. Tombaugh. Second Row: B. Morris, L. Solomon, E. Meier, E. M. Howard.

UNIVERSITY STUDENT COUNCIL

EVENING STUDENT BOARD

One of the latest organizations on Campus is the Evening School Board. A greater interest on the part of the Night School students for an organized activities program encouraged the creation of this Board.

The Board, which was elected in the same manner as the annual Universitywide elections, has sponsored several dances and programs throughout the past year. Their advisors have been Mr. Gordon Klopff and Miss Helen Horn.



First row: E. Herpel, J. Andrew, E. Kawa.
Second row: S. Tarnoff, A. Busch, J. Lyons, G. Klopff, Advisor.

A. W. S.



EXECUTIVE BOARD

First row: V. Murray, M. Georgilas, V. Rebholz, D. Lanspeary.
 Second row: W. Deutsch, Rec. Sec'y.; J. Miller, Treasurer; M. E. Darling, V.-Pres.; P. Abler, Pres.; B. McClellan, Program Sec'y.; P. Comstock; S. Falconer, Corres. Sec'y.
 Third row: H. Horn, Advisor; E. Kilpela, B. Bensmiller, J. Andrew, C. Tombaugh, N. Catalano, D. Stevens, M. Ritter, N. McGregor, S. Beck, G. Bailey.



ACTIVITIES BOARD

First row: V. Stortz, P. Abler, H. Horn, M. E. Darling, K. Widdifield.
 Second row: F. Zurker, E. Truskowski, Gloria Sugrue, Dorothy Maskal, Barbara Miller, Danica Miljevick.

CAMPUS HOUSE

Campus House is one of the two gathering spots for most organizational meetings and general activities. Its manager, lively Helen Horn, can usually be found busily advising some group or individual as to just how the centerpiece for the tea table should be arranged.

Campus House is the home of the Association of Women Students, which plans and directs women's activities. Miss Horn also acts as advisor to the A. W. S. Executive Board and Activities Board.

"Bridge, Hey?"



"Ticket, Hey?"



"Jive, Hey?"



RELIGIOUS ACTIVITIES

Religious activities under the counsel of Mr. Joseph P. Selden are the Newman Club, the Wesley Foundation, 1620 Club, Gamma Delta, Hillel, the Wayne Christian Fellowship, and the YWCA. These organizations sponsor activities for their own members of specific faiths and for the university-at-large.



Organized at Wayne in the fall of 1945, the Hillel Foundation directs of religious, social, and educational activities. This national campus unit of Jewish students, under the guidance of Rabbi Milton Aron, has its headquarters at 4841 Second Blvd.



Social and national organization of Wayne's Methodist students is the Wesley Foundation. With their director, Rev. Rudolph H. Boyce, activities are planned and executed in their home above the Bookstore.

Joseph P. Selden, Counselor of Student Religious Activities



Congregationalists of the 1620 club hold a business meeting



Y.W.C.A. at work.



FRESHMAN DAYS

Freshman Days are those days set aside for a program designed to introduce, welcome, and orientate the freshman students to the University. The program includes a series of examinations, guided tours of the campus, and, after the frosh have exerted themselves in these activities, a reviving tea for men and women, at the Union and Campus House, respectively.

UNIVERSITY SING

In three short years the University Sing has become steeped in tradition; the only aspect that is not traditional is the outcome. In 1944 the plaque was won by the Class of '47, and in 1945 by the Class of 1946. This year the rivalry was keenest between the Frosh and Senior Classes, with the Frosh coming out victorious. Evidently, the spirit instilled by the preparation of Freshman Days (see preceding page) is carried over to the Sing.



MED SCHOOL J-HOP

The Junior Class of the College of Medicine presented their annual J-Hop in the Crystal Ballroom of the Masonic Temple last November. Music was provided by LeRoy Smith and his orchestra. Jim Saunders was chairman of the dance.

Smooth



Sideline Chats



Hm-mm, Good



Ditto

SOPH PROM

Wayne's Thanksgiving holiday was launched by the Soph Prom. At intermission time, Mary Georgilas was crowned 'Miss Wayne U' in an impressive ceremony. Her court was composed of Joyce Batsford, Mary Jane Lundeen, June Miller, and Eleanor Moore. Couples in formal attire danced to the music of Lowry Clark's orchestra in the Crystal Ballroom of the Masonic Temple. Dance chairman was Barbara Ednie, assisted by Beatrice Jacques, Val Colombatto, Bill Schoenfeld, Kay Collinson, and Beulah Bensmiller.



Miss Wayne U



Small Fry

Let's Dance



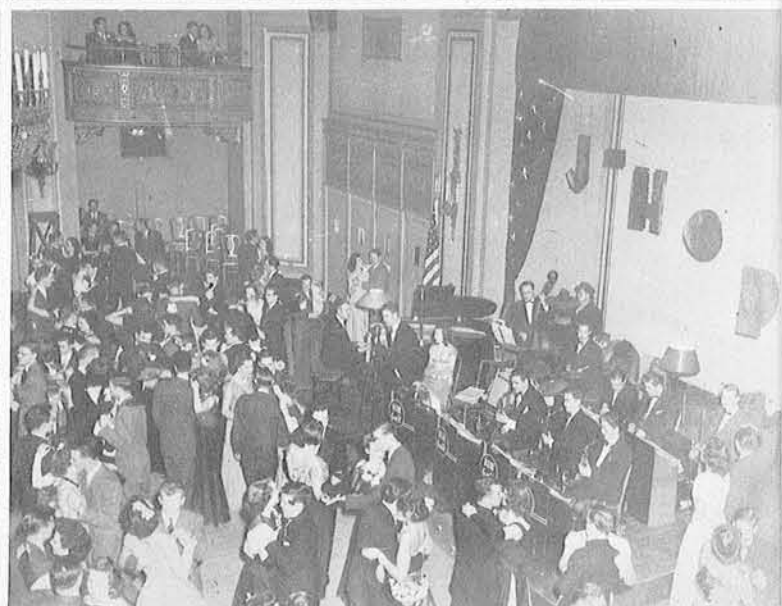
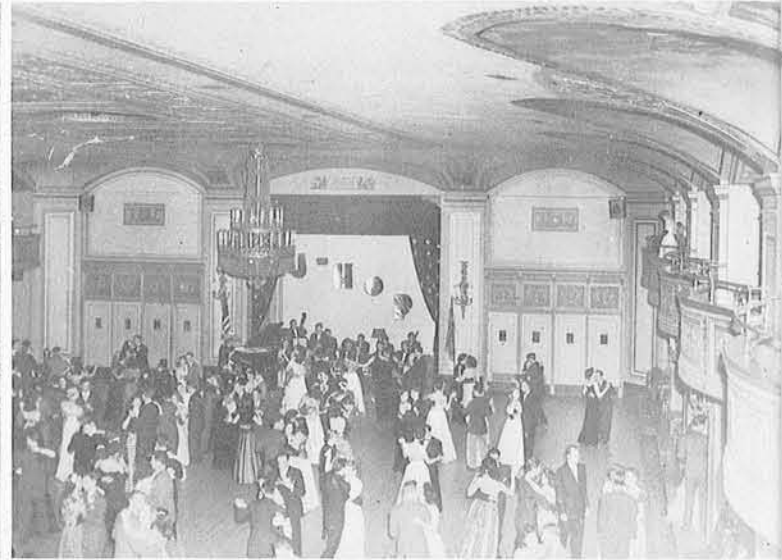
J-HOP

One highlight of the social calendar at Wayne during the school year was the J-Hop in February sponsored by the Class of '47. Pat Williams was presented as "Miss J-Hop" along with her court, Eleanor Colter, Shirley Falconer, Elizabeth Leach, and Mary Jane Lundeen. Miss Lundeen was also chairman of the dance, which was held in the Crystal Ballroom of the Masonic Temple, with the overflow of the crowd in the Oak Room. Others on the dance committee were Cora Tombaugh, Glenn Wilcox, Dolores Stevens, Ninfa Catalano, Veriel Vaughn, and Doris Lemke.



The Queen Steps Out

Mob Rule



MACKENZIE UNION GOVERNORS' BALL

This year marked the occurrence of the Ninth Annual Mackenzie Union Governors' Ball. The Ball was held at Masonic Temple Crystal Ballroom, and was highlighted by the proclamation of Lucille Iverson as the Governor's Lady. Couples danced to the music of Bobby Grayson and his Orchestra.

Leonard Baruch presents title and bouquet.



Lucille Iverson
The Governor's Lady





Cheer Up!

HOME

The Tartars provided a thrilling game for spectators who went to this season's Homecoming Game. The team played against Michigan State Normal College, and though they finished with a score of 14-13 in favor of Normal, their performance was marked by superior playing.

The University Marching Band played at intermission, during which time the Queen and her Court were presented.



No Sale



All in Unison

Capacity Crowd



COMING

The Homecoming Dance was held Saturday night, after the Homecoming Game on Friday, at the Maccabees ballroom. The court, Robin Hamilton, Marion Craig, Pat Sinclair, Mary Georgilas, and Mariruth O'Bryan, were elected by the student body, and the Homecoming Queen, Dottie Comstock, was elected by the football team.

Nick Cherup represented the football team as master of ceremonies; Don Cox was General Chairman.

Couple of Couples

Thrilling Moment



Cheese



STAR 'N' TARTAR

Wayne, not to be outdone by other universities, produced its own all male revue, Star 'N' Tartar in March of 1946. The show was part of the Share-A-Chair campaign for Percy Jones Hospital. Under the direction of Ed Bailey and producer Marvin Schlossberg, the revue featured acrobatics, pantomines, collegiate skits, and the not-to-be-forgotten music of Dacho Dachoff and his Swing Ensemble.



A. W. S. HOLLY HOP

For the first time since the war, A.W.S. held its annual Christmas dance. Mary Ellen Darling, general chairman, revived the tradition of the girl asking her date to the Holly Hop. In the Maccabees Ballroom, dancers swayed to the music of Bill Gail and his Orchestra.



Christmas Carols



The Grand March





Wintermart of November 1946 was headed by Rosemary Schultz, general chairman.



WINTERMART
Wayne's seventh annual carnival, was a gala affair. The halls were lined with gaily decorated booths, staffed by members of the many participating organizations. This activity represents the efforts of all Wayne groups to raise funds for the student center.



WAYNE UNIVERSITY RED CROSS UNIT

The Red Cross Unit of Wayne University is the contact body between the Red Cross of Detroit and Wayne University students. Its purpose is to fill any need which the Red Cross has and for which students at Wayne can provide the help.

Officers for the past year were Betty Chafets, chairman; Joanne Sloan, vice-chairman; Rose Fine, recording secretary; Anne Cummings, corresponding secretary; and Miss Mary Marjorie Smith, faculty advisor.

Some of the recent activities in which the Unit engaged were recruiting talent from the University to provide entertainment for nearby government hospitals, making costumes and directing make-up for the Star 'n Tartar Revue, and conducting the annual Red Cross Drive.

The Unit also sponsors classes in first aid, Braille, knitting, and nursing, which are open to University students.



WHO'S WHO

This year sixteen Wayne seniors appeared in the 1946 edition of Who's Who in American Colleges and Universities. "Who's Who" has been published annually for thirteen years and represents the student leaders of more than five hundred colleges and universities.

Liberal Arts seniors elected were Mae Blackard, managing editor of the Collegian; Dorothy Comstock, president of the Student Council; Wanda Deutsch, chairman of the Student Council Assembly Committee; William Gail, past president of the Student Council; Ruth Levine, editor of the Collegian; Shirley Martinez, editor of the Griffin; June Miller, treasurer of the Association of Women Students; Marion Ryberg, past president of the Senior Board; and Rosemary Schultz, chairman of Wintermart.

Seniors honored from the College of Education were Phyllis Abler, president of the Association of Women Students; Leonard Baruch, president of the Mackenzie Union Board of Governors; Dacho Dachoff, vice-president of the Mackenzie Union Board of Governors; Mary Ellen Darling, vice-president of the Association of Women Students; Eunice Kilpela, chairman of the Student Community Service Committee; and Elizabeth Wilhelmi, president of the Senior Board.

Leonard Zubroff, past chairman of the Mackenzie Union Activities Council, was the representative from the College of Medicine.



First row: Shirley Martinez, Mary Ellen Darling, Rosemary Schultz, Marion Ryberg.

Second row: June Miller, Mae Blackard, Leonard Baruch, Phyllis Abler.

Third row: Dacho Dachoff, Ruth Levine.

Fourth row: Eunice Kilpela, Wanda Deutsch, Elizabeth Wilhelmi, Dorothy Comstock, Leonard Zubroff.

MESSIAH

Last December the vocal and instrumental talents of Wayne University were combined in the sixteenth annual production of Handel's Messiah in the auditorium of the Masonic Temple. It was the first full-scale performance since the war limited the size of the band as well as that of the male vocal section. The program, which yearly attracts hundreds of Detroit and nearby music lovers who look forward to it as the introduction of the Christmas season, was given two nights in succession for the second time in the history of the production.

This year the soloists featured were Margit Kormandy, contralto; Vivien della Chiesa, soprano; C. Herbert Peterson, tenor; and Reinhold Schmidt, bass. The program was under the direction of Harold A. Tallman.



Reinhold Schmidt



Margit Kormandy



Vivien della Chiesa



C. Herbert Peterson

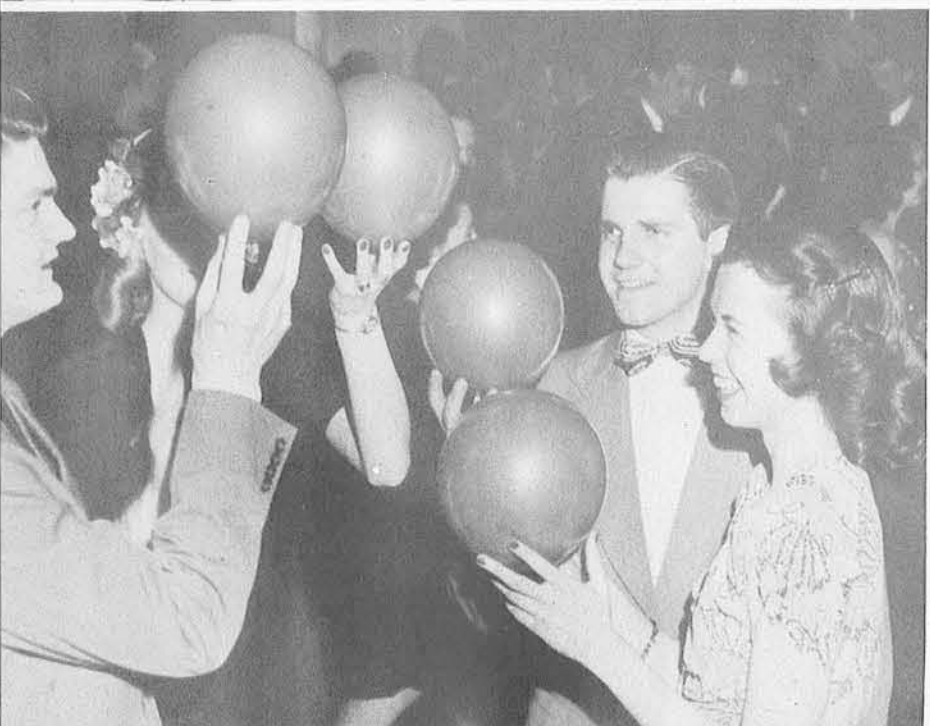




The Dean Directs



The "Candid"-ates



Oh for a Pin

The Oasis



FROSH FLURRY

Each year the Freshman Class turns the tables and elects a man as the crowning feature of their annual dance; this year George Zabudowsky was crowned the "Spring King" by Madeline Heilbronner. Other candidates for the title were Stanley Bulmer, Johnny Penner, and Jim Thrasher. Not to be outdone by the upperclassmen, the freshmen introduced their dance as semi-formal for the first time since the war. Chairman of the affair was Sue Wooten, assisted by Marilyn Ritter, Lillian Doble, Curtis Solminson, Virginia Barrett, and Marguerite Undrant.



Spring King

Forward, march!





Top—Platter Parade

Top—On the Air

Below—Rehearsal with gestures

Below—Sound effects

WAYNE UNIVERSITY BROADCASTING GUILD

WUBG has carried the name of Wayne University over the airwaves in four program series this year. The "Guild Playhouse" and "Especially for You" have been heard over Station WJLB. WJR has been the broadcast medium for "Books Bring Adventure" presented by the Guild in cooperation with the Junior League of Detroit. "Future Unlimited" has been carried on WXYZ. Professional standards and close schedules have been maintained under the supervision of Dr. Preston Scott and Mr. Charles Livingston. Sallye Pickens was student manager of the Guild.

WAYNE UNIVERSITY THEATRE

The Wayne University Theatre has presented six productions this year, playing in almost every case to full houses. Three of the presentations, "Skin of Our Teeth", "Kind Lady", and "Lady Precious Stream", were given on the full stage. Three others, "Right You Are If You Think You Are", "Silver Cord" and "Spring Dance" were staged in the circular theatre form. Under the leadership of Mr. Leonard Leone, director, and Mr. Lynn Orr, associate director, the season was an outstanding success. Don Blakely served as technical director of the Theatre, Marilyn Davis as business manager and publicity director, and Helen Buliga as secretary.



"Skin of Our Teeth"

Two Scenes From "Kind Lady", third production of the season



WAYNE UNIVER

Edna Rush, President
Dacho Dachoff, Vice-president
Marion Kelly, Secretary
Catherine Jett, Treasurer

SITY BANDS

Graham T. Overgard, Director

Combined Concert, Varsity,
and Marching Bands



THE DETROIT

COLLEGIAN



Ruth M. Levine
Editor



Business Staff
Hustles Ads

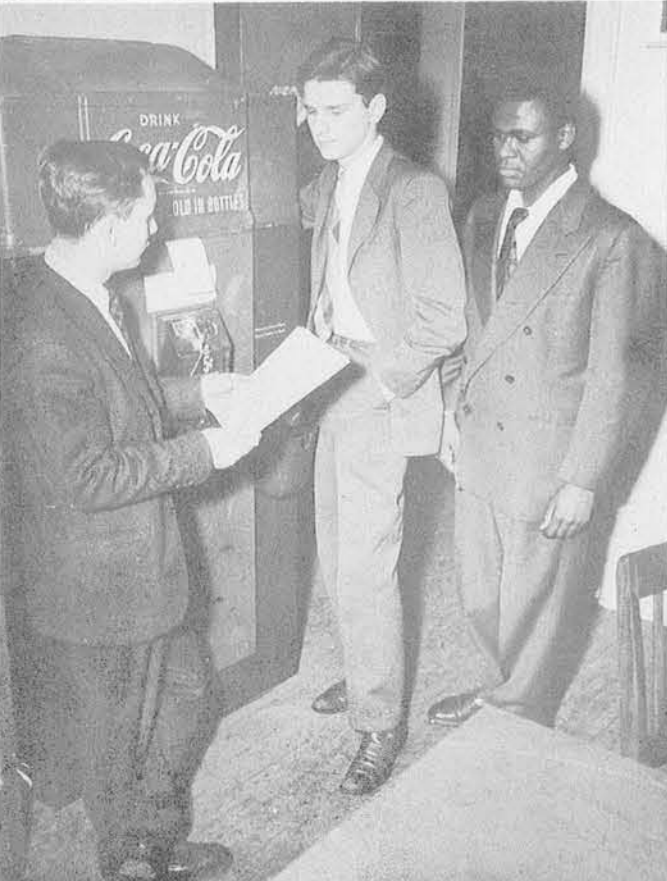
News Editor and
Assistants



Putting the Paper to Bed



Editorial Confab



In the Sports Office

The Detroit Collegian policies are governed by the Editorial Board: Ruth M. Levine, Editor; Mae K. Blackard, Managing Editor; Ruth Driker, Business Manager; Eleanor Colter, News Editor; Rollo O'Hare, Ginger Rebholz, Night Editors; Marilyn Hines, Copy Editor; Paul Pentecost, Sports Editor; Audley Grossman, Music and Drama Editor; Irving Fink, Photo Editor.

The Editorial Staff carries out the policies presented by the Board. Members of the Staff are Lucille Iverson, Gerry Manko, Bob Quirk, Sheldon R. Uday, and Mort Zieve, Staff Writers. Others are Joel Dvorman and Glenn Smith, and Sol Sachs, Cartoonists, as well as Cal Nixon, Sherm Tarrant, and Wes Young, Photographers. Staff Reporters are Ann Bakalis, William Carter, Clarence Dobronski, Frances Dusty, Miriam Fogel, Bob Greene, Joan Hood, Warren Jahnke, Dolores Lauder, Alice Lightfoot, Margaret Paulun, Eudora Poole, Mary Roddy, Mary Lou Schuetze, Lillian Sobel, Evelyn Stollman, and Alice Marie Vansickle.

THE STUDENT-FACULTY DIRECTORY

The staff of the Student-Faculty Directory was headed by Editor-in-chief Mary Georgilas in cooperation with Marie Olshefsky, Business Manager. Associate editors were Ninfa Catalano, Beatrice Jacques, Virginia Murray, and Cora Tombaugh. The huge task of alphabetising the thousands of names fell to the hands of staff assistants Phyllis Abler, Dale Berger, Marion Gressit, Elizabeth Leach, Virginia Rebholz, Paul Strauss, Patricia Sinnamon, Diane Coleman, and Sherman Mendelsohn.



THE WAYNE HANDBOOK

The Wayne Handbook, written in the theme of a passport to Wayne's many facilities, was edited by Barbara Snover. Eleanor Colter was Managing Editor and Mary Kramer was the Business Manager. Other capable members of the staff were Ruth Driker, Joyce Pollard, and cartoonist Sol Sachs.



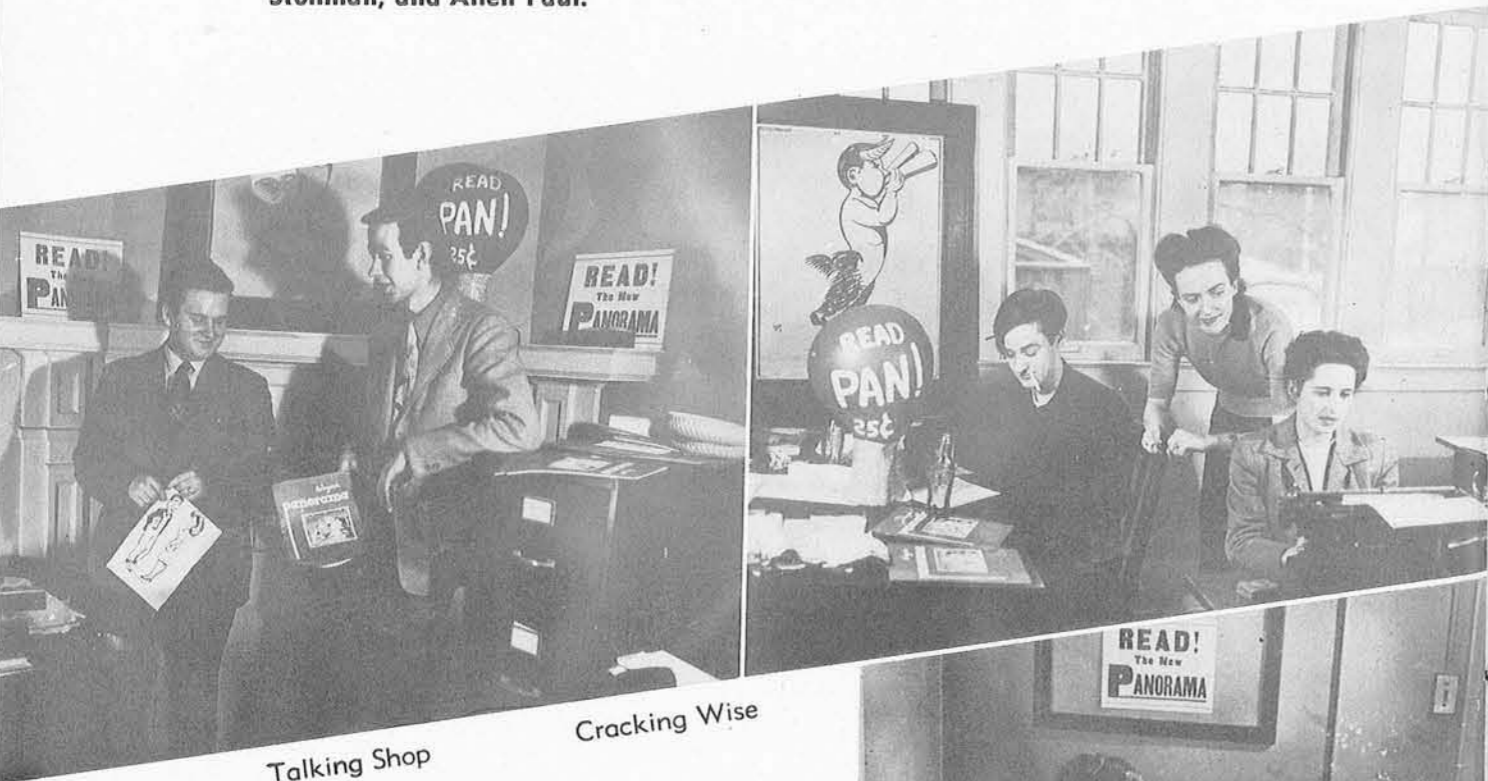
PANORAMA

Wayne's literary magazine, *Panorama*, was guided through the perils of restoration by Joyce Pollard, Editor. Harold Fine, Aaron Rosenblatt, and Ruth Sartorius served on the Editorial Board; Norman Humphrey, Jay McCormick, and Melvin Tumin and Vincent Wall acted on the Advisory Board. Editorial Associates were Rollo O'Hare, Judy Oates, and Bob Rothman. Art Staff consisted of Rollo O'Hare, Norma Dupuis, and Bob LaRue.

Shirley Heinz headed the Business Staff as Business Manager. Office Manager was Rose Fine, Circulation Managers, Marion Fink, and Audrey Beerbohn, and Business Assistants, Geraldine Lentz, Bertha Nisenbaum, Fay Stollman, and Allen Paul.

WAYNE ENGINEER

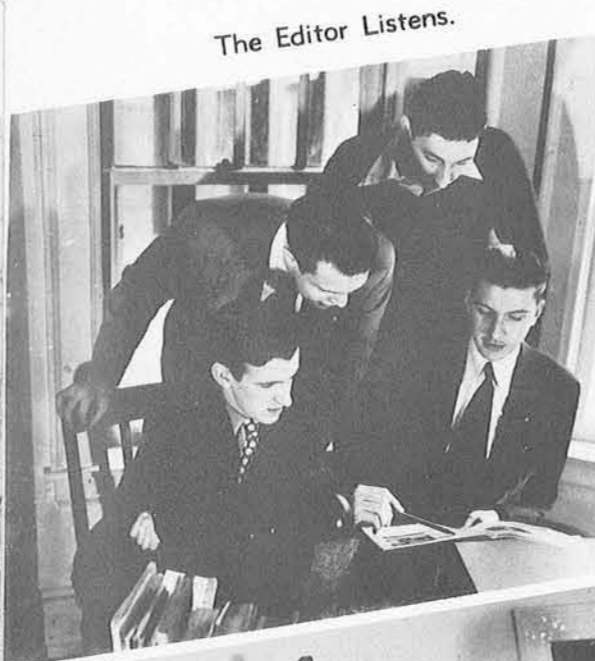
The Wayne Engineer Staff was headed by Ed Meier, Editor, this year just as last. Irving Moser acted as Managing Editor, and Merle Scheibner as Office Manager. Henry Bachmann pushed sales as Circulation Manager. Functioning on the Editorial Staff were Donald Armstrong, Robert Aufmann, Harry Balkany, George Berman, Gunther Brauning, Theodore Brauning, Gerald L. Goldberg, Edward Hayes, Alexander Karay, Paul Kirkus, and Richard Pattison; Aaron Barr served as Column Editor. Ad-getters and salesmen were Jim Daly, Charlotte Marburger, Delores Schultz, David Selik, Dean Scott, and Theodore Waffle.



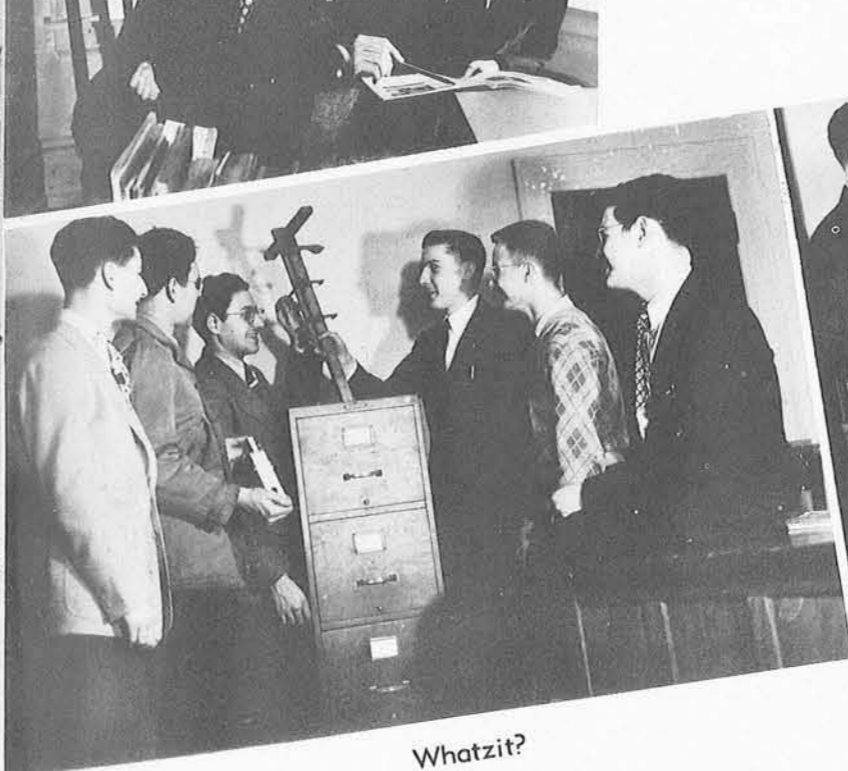
Talking Shop

Cracking Wise

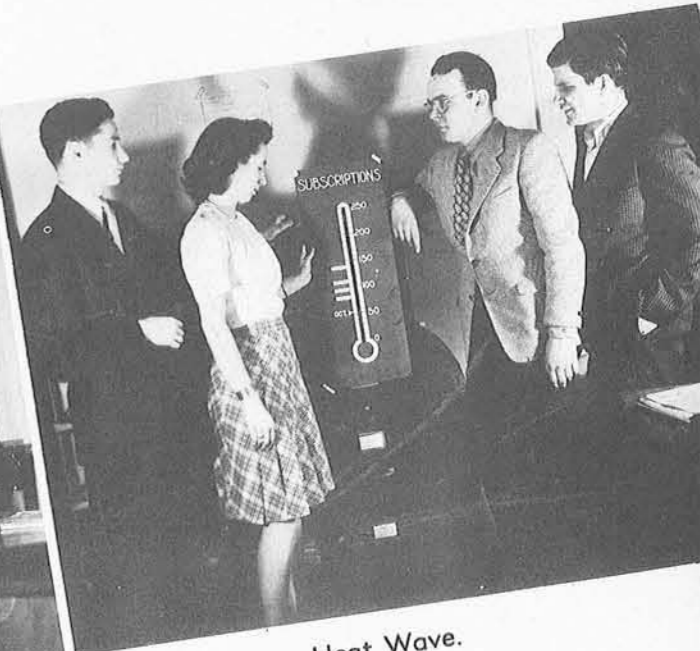
The Editor Reflects



The Editor Listens.



Whatzit?



Heat Wave.

THE GRIFFIN

Heading Wayne's yearbook for 1945-'46 were Editor Shirley Martinez and Managing Editor, Dolores Stevens. Art Editor was Doris Lemke. Serving as Business Manager was Patricia Williams.

Section Editors were Mary Jane Lundeen, Administration, Bernadine McClellan, Seniors, Eunice Kilpela, Organizations, Blanche Reznick and staff, Activities, Jean Simon and Paul Pentecost, Sports, and Jill Sherlitz, Features. Photographers were: Sherman Tarrant, Irving Fink, Wesley Young, Calvin Nixon, and Tom Williams.



Deciding on layout



Talking it over

FOR 1946

The business staff included Peggy Comstock, Dorothy Lanspeary, Calvin Nixon, Wesley Young, Glenn Bates, advertising manager, and Alan Ash. Assisting in the art work were Erika Ochsner, Beverly Lyons, Emily Blacha, and Budd Barclay.

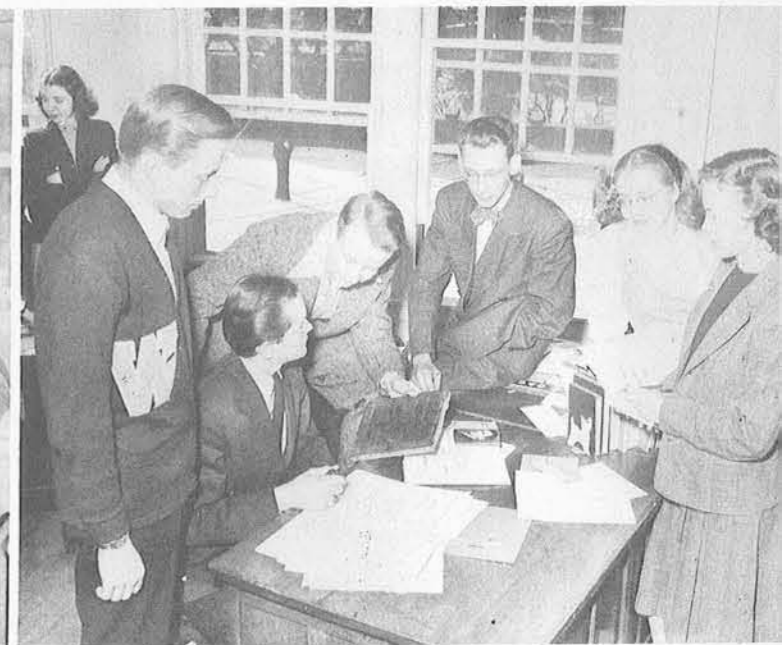
Offering valuable help were staff members Doris Pfromm, Beth MacDonald, Jean Kinley, and Glendora Neff.



The Editor



Mr. Shout "ed-vises"



Business Conference



A Campus Wardrobe



For Tea Time

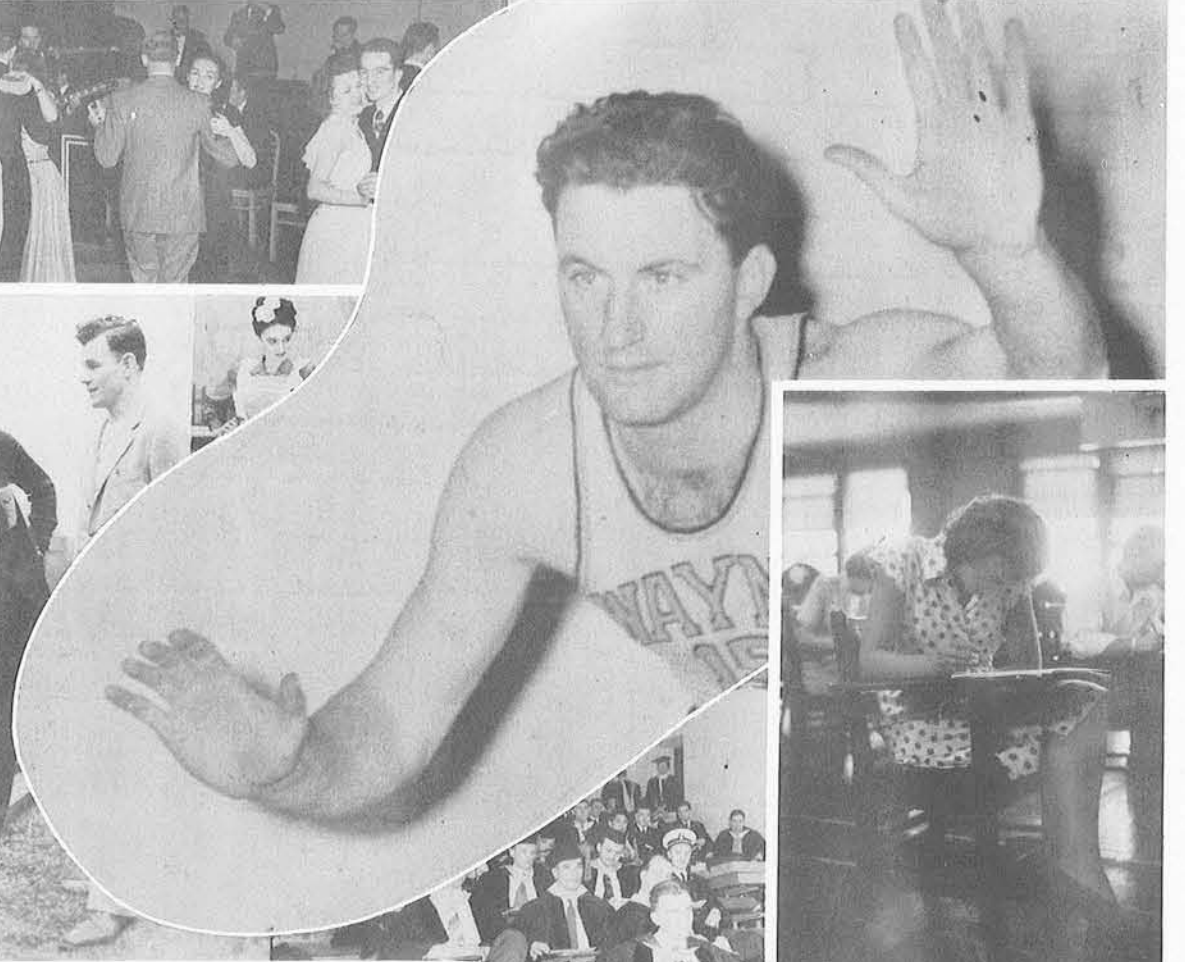


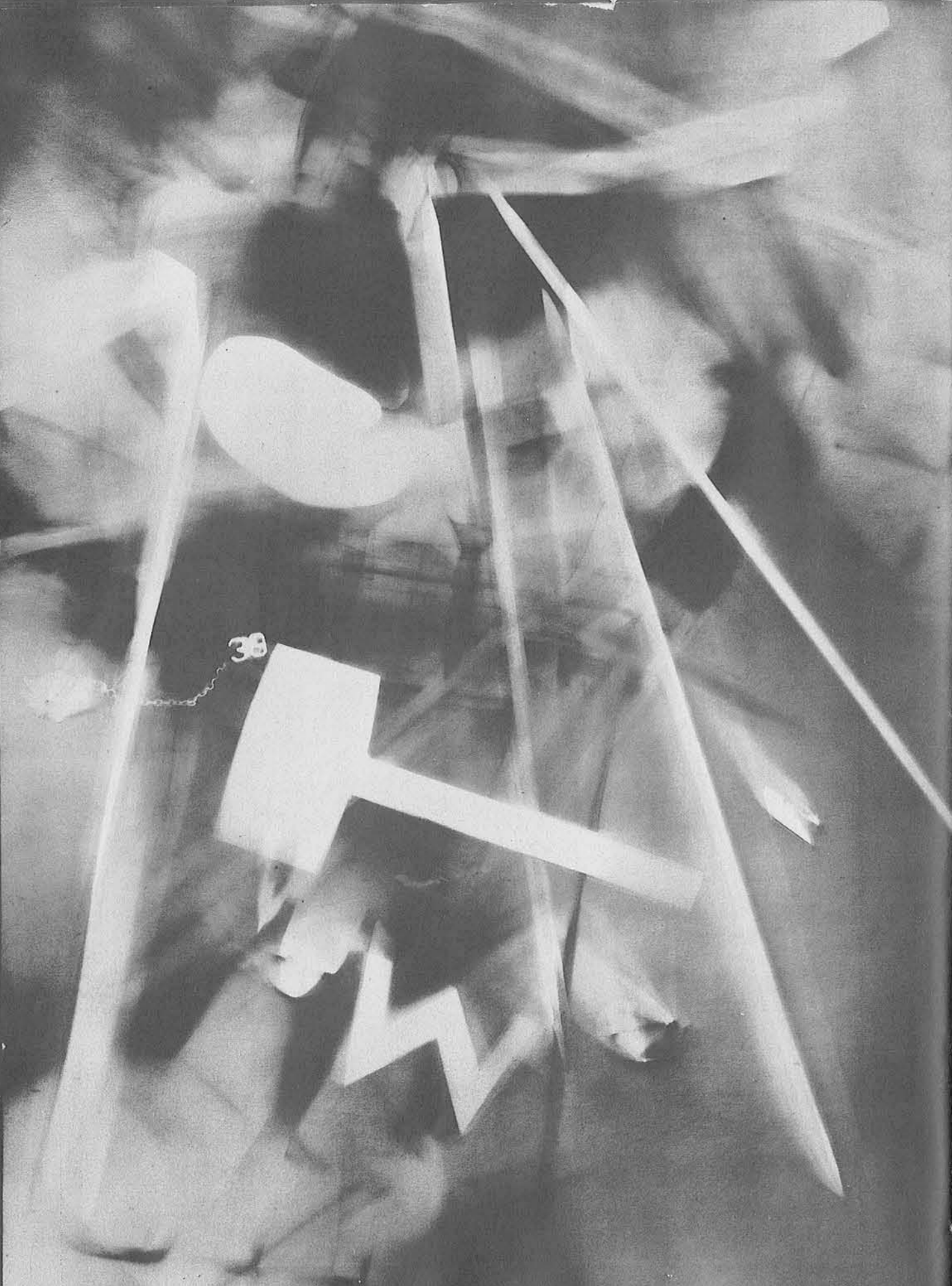
Date with the Sand Man

Just a Sample

FASHION SHOWS

Wayne students, like all others, enjoy fashion shows. The Association of Women Students started the year off with a review of fashions typical of Wayne girls. When it proved so successful, AWS combined with the Mackenzie Union and the Collegian in presenting a really bang-up show, "Styles-a-Poppin".





ORGANIZATIONS



Row one: D. Klemick, R. Stevenson, M. Georgilas, N. Usrey, G. Bailey, E. Platt, B. Weinberg.
 Row two: P. Mitchell, E. Harrison, L. Zussman, E. Imboden, D. Lemke, G. O'Rourke, E. Eisman,
 V. Colombatto. R. 3, E. Wilkinson, T. Paterson, J. Glavac, D. Jones, J. Duffy, H. Ritter, V.
 Petit.

INTERSORORITY COUNCIL

OFFICERS

Norma Usrey President
Gloria Bailey Vice-President
Mary Georgilas Secretary
Kittie MacKenzie Treasurer

MEMBERS

Alpha Beta Pi	Delta Gamma Chi	Sigma Iota	Theta Kappa Sigma
Alpha Kappa Alpha	Iota Alpha Pi	Sigma Rho Chi	Xi Omicron
Alpha Sigma Tau	Pi Kappa Sigma	Sigma Sigma	Zeta Chi
Alpha Theta Sigma	Omega Upsilon	Sigma Theta Delta	

"We stand for good scholarship, good health, whole-hearted co-
 operation with the University, maintenance of fine social standards,
 and service to our community."

ALPHA KAPPA ALPHA

"To promote scholastic and ethical achievements and to foster unity and
 friendship among college women."

PLEDGES

Constance Blount
 Marjorie Day
 Pauline Day
 Barbara Gordon
 Wilma Griffith
 Lorna Holliday
 Roberta Hill
 Jimmie Howard
 Alice Jones

Lorraine McDonald
 Emma McLeod
 Bernice Miller
 Vastine Neely

Gwendolyn Pinkney
 Frances Ward
 Verdell Wells
 Naomi Williams
 Mildred Wilson



Row one: T. Whitworth, J. Stephens, Sec'y., E. Page, W. Freemon, Treas., D. Phillips, Cor. Sec'y., M. Muthleb, Sentinel. R. 2, D. Shivers, L. Holliman, E. Johnson, D. Costen, D. Carsen, J. Lampton, E. Edmonson.



ALPHA SIGMA TAU

Alpha Sigma Tau is a national social sorority, the purpose of which is to promote the ethical, cultural, and social development of the members.



Row one: M. Clemons, N. Cook, D. Dailey, Vice President, B. Miller, Cor. Secretary, P. McConnell, Rec. Secretary, K. Stabile.

Row two: Dupuis, M. Pitynski, J. Reagan, I. Kaczmarek, K. Bucht, K. Weaver, J. Steven.

Row three: J. Mack, D. Harris, N. Usrey, P. Lewis, C. Ott, B. Melville.



Row one: P. Coutts, V. Andrews, Rec. Secretary, E. Wilkinson, J. Glavac, President, O. Gorup.

Row two: K. Sewa, F. Kraus, M. Hrdlicka, J. Blasic, L. Perreault, L. Rowe, L. Courtwright.



ALPHA THETA SIGMA

Alpha Theta Sigma is a local sorority, the purpose of which is to become more a part of Wayne University and to promote womanliness, scholarship, cooperation, honesty, and better fellowship with girls of the campus.